

Instructions for your new

TrophyChair

Multi-Purpose Tree Seat

READ ME FIRST!!!

Please read carefully BEFORE using your new TrophyChair Multi-Purpose Tree Seat.

Congratulations! You have purchased the finest commercially available tree seat on the market today. The TrophyChair is designed and built to provide years of troublefree, successful hunting with a minimum of maintenance and care. This instructional information is provided to you to outline the recommended use, care, and maintenance of your TrophyChair.

- BEFORE USING ANY TREESTAND OR RELATED PRODUCT, MAKE SURE YOU WEAR A SAFETY BELT EVERY TIME YOU CLIMB!!!
- DO NOT USE THIS OR ANY OTHER TREESTAND OR ACCESSORY IF YOU HAVE BEEN USING DRUGS OR ALCOHOL!
- FOR YOUR SAFETY, DO NOT USE THIS PRODUCT DURING STORMS, WHEN TREES ARE WET OR ICY, OR ON TREES THAT ARE LEANING OR THAT APPEAR DEAD OR DISEASED.
- DO NOT USE THIS PRODUCT IF YOU HAVE NOT FOLLOWED THE MANUFACTURERS CARE AND MAINTENANCE GUIDELINES!
- FAILURE TO FOLLOW THESE INSTRUCTIONS MAY CAUSE SERIOUS INJURY OR DEATH!!

NOTE: Weight limit for this product is 260 lbs.

Attachment to a Tree

1. The TrophyChair is designed to attach easily and quietly to trees 8 to 30 inches in diameter. When attaching it to a tree, swing the rope with the 1/4" diameter S-hook on it around the tree, as shown in **Figure 1**. It may be necessary to adjust the rope by pulling on the loose end of the rope to decrease the amount of slack in the rope. Once you have the S-hook in your hand and the rope is around the back of the tree, simply attach the hook to the loop welded onto the top of the TrophyChair, as shown in **Figure 2**. It may be necessary to tighten the rope on the tree to raise or lower the height of the seat. It is not necessary to have the rope extremely tight

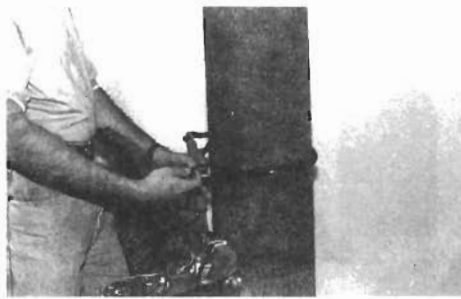


Figure 1

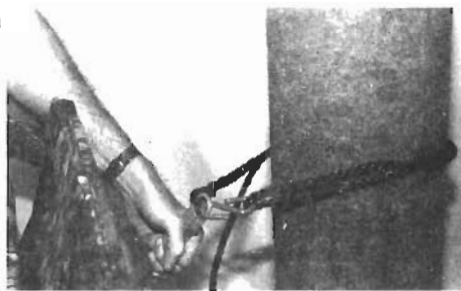


Figure 2

because the seat "hangs" from the tree. Now take the supplied 1" strap with the alligator clip on the end and secure it around the tree. This should be secured around the tree just above the U-Shaped standoff. Make sure it is securely tightened and around the vertical bar, as shown in **Figure 3**. The black bungee (elastic) cord will prevent the back rest from rotating forwards if you stand to shoot.



Figure 3

Carrying the TrophyChair

The TrophyChair is light weight and easily transported. Adjust the rope with the S-hook on it so that there is approximately 4 feet of rope from where the rope is permanently attached to the U-loop, as shown in **Figure 4**. Then position the rope so that it travels across the center of the front edge of the seat, as shown in **Figure 5**. Attach the S-hook around the 1/4" arm rest support rod where it attaches to the U-shaped stand-off tube (either side) as shown in **Figure 6**. Now you're ready to carry the TrophyChair as shown in **Figure 7**. The rope will travel across your chest diagonally, similar to a gun sling.



Figure 4

Using the Safety Belt with the TrophyChair

A. Attaching the Summit Safety Belt

1. The first time using the belt, weave the furnished 3-bar slide buckle onto the end of the belt that is not attached to the seat frame, as shown in **Figure 8**. This step is only necessary once, as the slide buckle can be left on the belt (if desired). *Note: If you lose the 3-bar slide buckle, do not use your treestand until a replacement is obtained from Summit!*



Figure 5

2. Once the seat is attached to the tree, take the free end of the belt (the one with the slide buckle) around the tree (above the tree-stand) and bring the free end under the belt section attached to the seat, as shown in **Figure 9**.

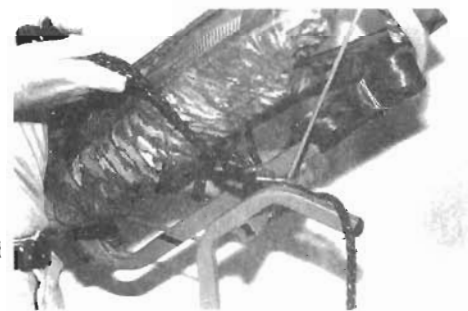


Figure 6

3. Now bring the free end back over the belt section attached to the seat and then under the belt (bringing the free end towards you) where the half-hitch is

being formed, as shown in **Figure 10**. This is very similar to the first steps in tying a necktie. The "knot" should now look like **Figure 11**.

4. The slide buckle should now be pushed onto the belt far enough to allow for placing the loop on the free end of the belt (see **Figure 8** again) over your head and shoulders and then around your upper chest (see **Figure 12**). Now pull the slide ring towards your chest until the belt is snug. The belt **MUST** be positioned directly underneath your arms. **IMPORTANT NOTE:** *The amount of slack between your body and the tree must be adjusted so that no more than 3 (three) feet of slack exist while standing.* This will allow for ample freedom of movement as well as unrestrained comfort sitting on the seat. On larger trees, simply make the half-hitch around the tree high enough to reduce the slack to 3 (three) feet. For smaller trees, this can be done by looping the belt twice around the tree (or more if necessary) before making the half-hitch on the tree.

Should a fall occur, the belt will enable you to determine a safe way to get down - either by getting help or by making a controlled descent. The loop around your chest will end up as a secure sling under your arms and offer more freedom to turn and move as compared to a waist belt.

Use this belt at all times! We care about your safety!

5. The slide buckle can now be rotated around to your back (without affecting the snugness of the belt on your chest), as shown in **Figure 13**. This will allow for freedom of movement.

B. Carrying the TrophyChair with the Safety Belt Attached.

1. Since the Safety Belt is attached to your Summit TrophyChair, carrying the TrophyChair is

simple if you follow these directions.

2. After removing the seat from the tree, or preparing to go to a hunting location, simply wrap the safety belt around the arm rest bar of the seat.



Figure 7



Figure 8



Figure 9

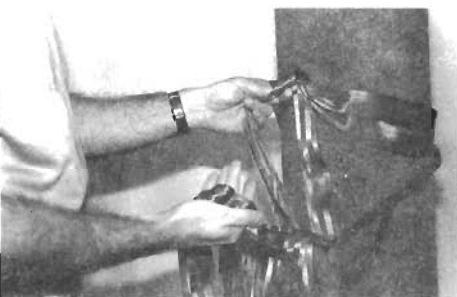


Figure 10



Figure 11



Figure 12



Figure 13

LIMITED WARRANTY

(A) Warranty

Summit Specialties, Inc. (Summit) warrants to the original retail purchaser that all products manufactured by it are free from defects in material and manufacture at the time of shipment for twelve (12) months from the date of purchase. Summit will repair or replace any part found defective if the unit claimed to be defective shall be returned to Summit, postage prepaid, within the warranty period.

This warranty shall not apply to any product which has been subjected to misuse; misapplication, neglect (including but not limited to improper maintenance); accident; improper installation; modification (including but not limited to use of unauthorized parts or attachments), adjustment, or repair. **THE FOREGOING IS IN LIEU OF ALL OTHER WARRANTIES, WHETHER EXPRESS OR IMPLIED (INCLUDING THOSE OF MERCHANTABILITY AND FITNESS OF ANY PRODUCT FOR A PARTICULAR PURPOSE), AND OF ANY OTHER OBLIGATION OR LIABILITY ON THE PART OF THE COMPANY.**

(B) Limitation of Liability

It is expressly understood that Summit's liability for its products, whether due to breach of warranty, negligence, strict liability, or otherwise, is limited to the repair of the product, as stated above, and Summit will not be liable for any other injury, loss, damage, or expense, whether direct or consequential, including but not limited to loss of use, income, profit, or damage to material, arising in connection with the sale, installation, use of, inability to use, or the repair or replacement of, Summit's products.

Summit reserves the right to make alterations or modifications in its products at any time, which in its opinion, may improve the performance and efficiency of the product. It shall not be obligated to make such alterations or modifications to products already in service.

Please fill out the warranty card below and return to:

SUMMIT SPECIALTIES, INC.
P.O. Box 786
Decatur, AL 35602

Cut Along Dotted Line

Cut Along Dotted Line

Warranty Card for Summit TrophyChair

Please complete and return within 15 days from date of purchase

Owners Name _____ Street Address _____
 City _____ State _____ ZIP _____ Phone (____) _____
 Date Purchased _____ Purchased From (Dealer Name) _____ Price \$ _____
 You heard about us through: Magazine Advertisement Video Friend I purchased your catalog
 Other- Please explain _____