



## Adobe InDesign CS4 Live Preflight

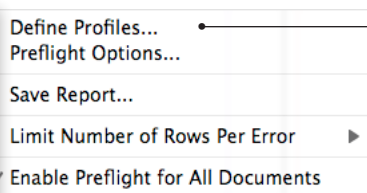
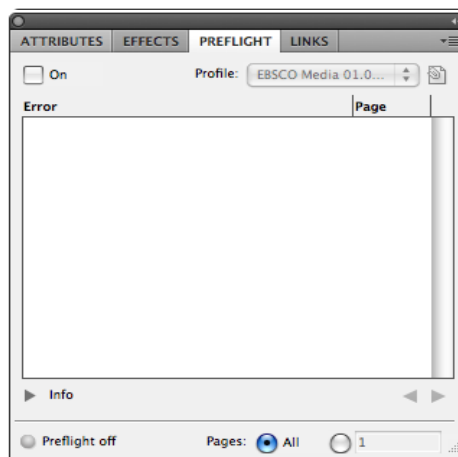
InDesign CS4 introduces Live Preflight which lets you automatically preflight your design in real-time. Live Preflight alerts you to potential production problems so you can quickly navigate to a problem, fix it directly in your InDesign layout and continue working.

View an instructional Live Preflight video at [Adobe's website](#).

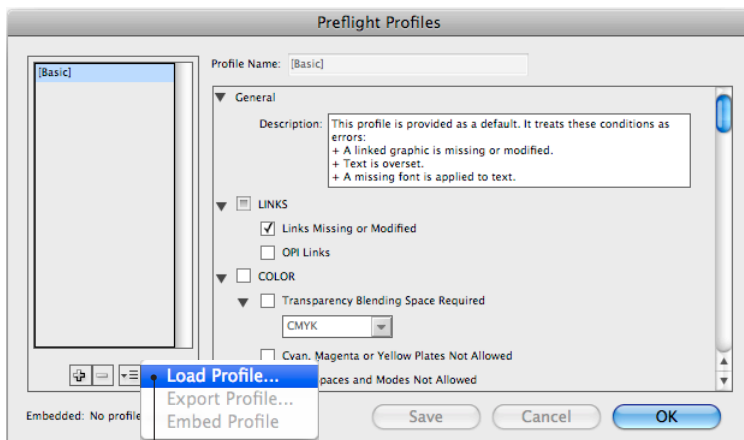
### Loading A Profile

EBSCO Media has created a Preflight Profile that you may download from our [LearningCenter](#) or request via e-mail and use when creating documents for commercial printing.

Open the Preflight Panel (Window > Output > Preflight), then choose Define Profiles...from the pop-out menu.



Choose Define Profiles...from the Preflight panel to load a profile



Choose Load Profile....(navigate to the profile provided via download or e-mail).

Note: when EBSCO Media updates the Preflight Profile, we will change the name to reflect the new creation date. Please check our web-site to verify you have our latest profile.

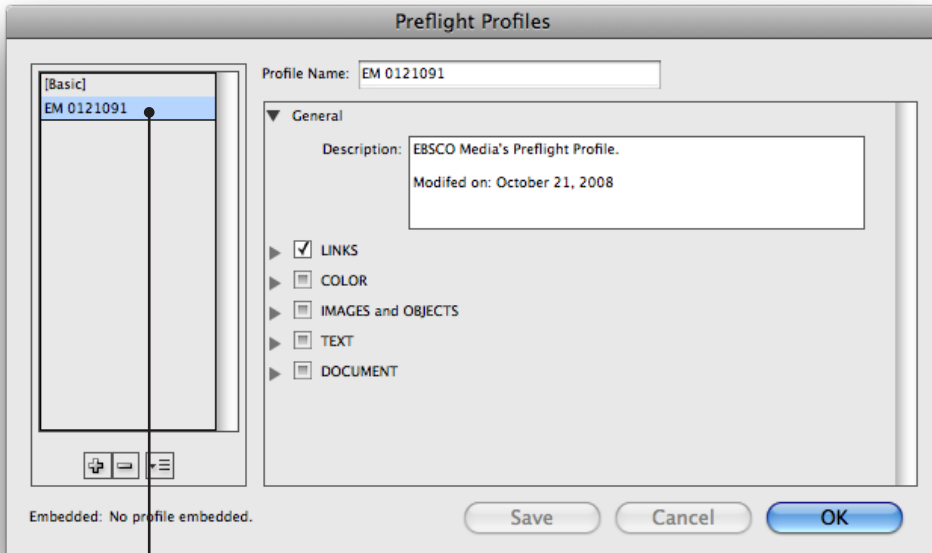
Choose Load Profile... and navigate to the preflight profile.

Questions, contact: Randy Jamerson at 205.226.9557 or e-mail: [rjamerson@ebSCO.com](mailto:rjamerson@ebSCO.com)

EBSCO MEDIA • 801 Fifth Ave S. • Birmingham, Alabama 35233 • 800.765.0852 • [www.ebscomedia.com](http://www.ebscomedia.com)

### Preflight Profiles Panel

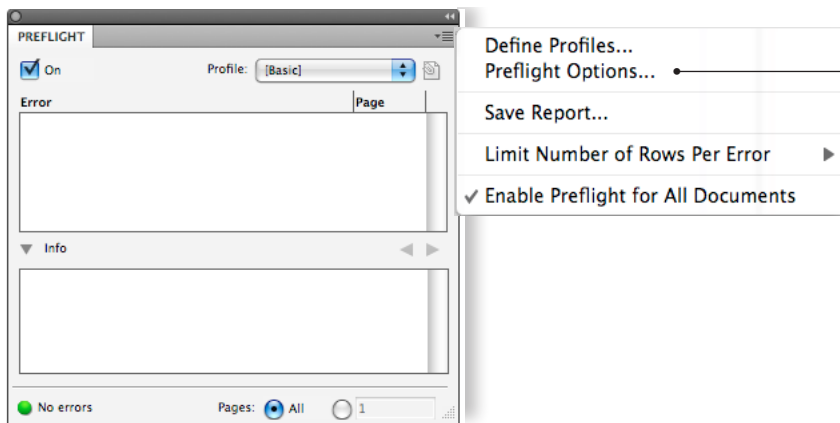
Once loaded, the Preflight Profile will be listed in the Preflight Profiles panel.



Once loaded, the Preflight Profile will be listed in the Preflight Profiles panel. Each project may vary. These Preflight settings were designed to cover the majority of jobs produced by EBSCO Media.

### Preflight Options

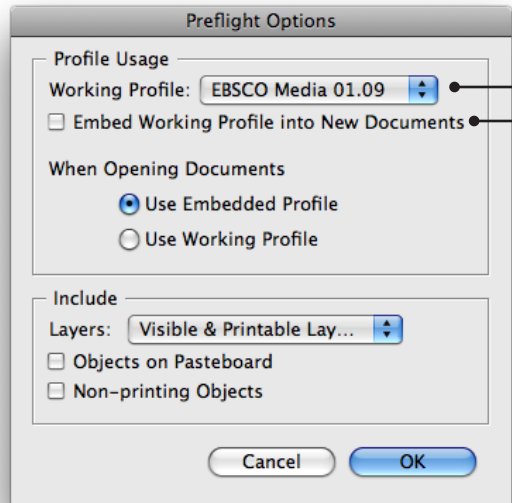
To set the EBSCO Media 01.09 Profile as your default, choose Preflight Options from the fly-out menu.



To set the EM Profile as your default, choose Preflight Options... from the fly-out menu.

## Adobe InDesign CS4 Live Preflight

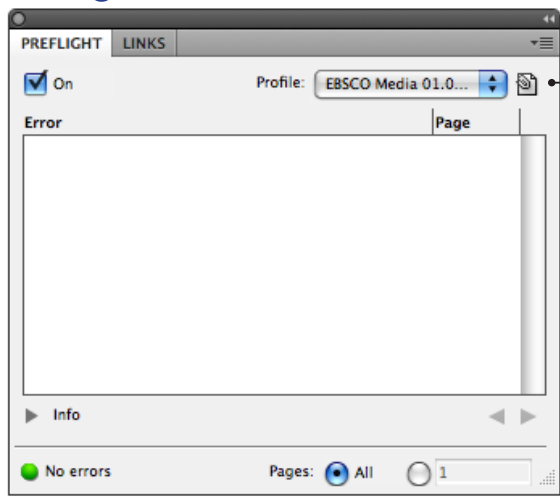
### Preflight Options



Choose EBSCO Media 01.09 from the pop-up menu.  
Choose Embed Working Profile Into New Documents.

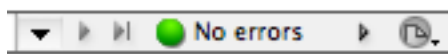
Even though you are Embedding this profile, you can still choose other Preflight Profiles depending on your final output.

### Preflight Panel



Open the Preflight panel (Window > Output > Preflight) to make sure the EBSCO Media Profile is selected.

TIP: To open the Preflight panel, double click on the Preflight status bar or press the Command + Option + Shift + F



Located at the bottom left corner of your document window, is the Preflight Status bar.

### Inside EBSCO Media's Preflight Profile

Adobe's Live Preflight can be custom-configured to flag dozens of file conditions. However, EBSCO Media has configured a profile containing a **minimal** set of warning conditions. Please enable the EBSCO Media profile when creating your InDesign documents. If the warning conditions are addressed, possible production delays are avoided and the quality of your printed projects will be optimized..

#### Our Preflight Profile Is Configured to Check...

##### Link Warnings

This warning means that you have placed (or have an OPI link to) an image that has been moved, deleted or renamed after it was placed. InDesign cannot locate the file. Relink to the image to correct this issue.

##### Color Warnings

**Spot color.** Colors should be edited for process color if spot color ink is not desired. If spot color (special order ink) is desired, ignore a spot color warning.

**Overprinting Applied, Overprinting applied to white (or paper color):** There is no "white ink" used in commercial printing, therefore white items set to overprint another object will not print at all. With overprint disabled, white items will knock-out (or reverse out) of background images. Setting application overprints is not necessary. If overprinting is required (usually black overprints a light background), this is handled automatically at EBSCO Media.

**Registration Color:** Registration color is built out of 100% of the four process colors plus spot colors (if used). The only appropriate use of registration black is for building your own registration marks (rare) so NEVER create anything with registration color. ( To avoid choosing Registration instead of Black [which are next to each other in the palette], you can re-order colors in the palette by dragging the swatch to different location. Ironically, items created out of registration black are almost impossible to register on press.

##### Images and Objects Warnings

**Minimum Resolution:** 200 dpi (lower resolutions may look "bitmappy" or pixelated).

**Min. Stroke Weight:** 0.25 pt. Line widths less than .25 pt. may not print as expected (or at all).

**Bleed / Trim Hazard:** 0.125" (images or type closer than .125" to trim will be flagged). If your document does not require bleed, "the bleed error can be ignored, but please do not ignore the trim hazard warning.

**Text:** Overset Text (excess text you cannot see in a frame or table).

**Font Missing:** Missing fonts must be replaced. (TYPE > FIND FONT)

---

Questions, contact: Randy Jamerson at 205.226.9557 or e-mail: [rjamerson@ebSCO.com](mailto:rjamerson@ebSCO.com)

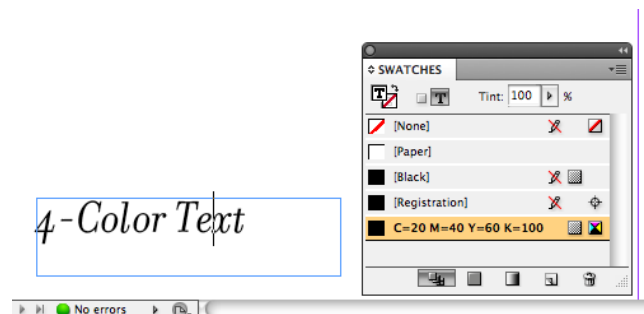
EBSCO MEDIA • 801 Fifth Ave S. • Birmingham, Alabama 35233 • 800.765.0852 • [www.ebscomedia.com](http://www.ebscomedia.com)

### Live Preflight Limitations

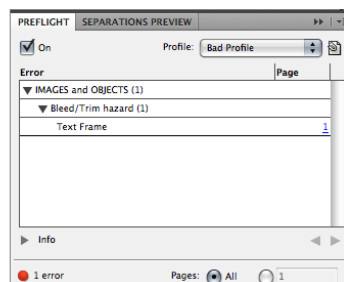
Preflight in CS4 is quite different from previous CS versions. It is completely redesigned and provides relevant during document construction. As with most new software, there are some limitations that may be addressed in future incarnations. The following are known issues we have identified (as of January 2009). Check our website for updates of this TECHNOTE.

**Four Color Text:** As noted in this document, registration color applied will generate an error. However, you can not define a warning for your own rich black. This is a problem if a user defines a swatch for their own custom rich black. If this color is inadvertently applied to body text, this will cause registration problems on press.

Black text should always be black ONLY. Sometimes text that is imported into InDesign contains Cyan, Magenta and Yellow plates when it should only be 100% black. (Word files are notorious for this).



*Bleed Trim Hazard*



**Bleed/trim hazard:** An issue problem with the Bleed/Trim Hazard warning is that if you have a text frame in the bleed hazard zone, it will trip off the warning (even if there is no text in the zone). The presence of the frame alone will cause this to happen. If there is no stroke and fill, it still reports an error.

This new **Live Preflight** function is a very useful tool and it is certain that Adobe will improve it in response to customer feedback, but there's still no substitute for careful preflight by a real human.