

GLOBAL POINT™
PRODUCTS

5.0 MEGA PIXEL DIGITAL CAMERA

User Manual



Global Point Products
5815 County Road 41
Farmington, NY 14425
U.S.A.


WARNING:



CHOKING HAZARD—Small parts.
Not for children under 3 years.

Thank you for purchasing this product. Please read this User Manual carefully before use and keep for future reference.

CAUTIONS

- 1 Do not fire the flash close to anyone's eyes. This might cause damage to the person's eyesight.
- 2 If subjected to impact, the glass of LCD might break and the internal fluid would leak. If the internal fluid comes into contact with your body or clothes, rinse with fresh water. If the fluid enters your eyes, consult a physician immediately after rinsing.
- 3 A digital camera is a high precision electrical and optical instrument. Do not drop it, strike it or use excessive force when handling. This might cause malfunction to the camera.
- 4 Do not use the camera in humid, steamy, smoky, or dusty environments. This might cause fire or electric shock.
- 5 Do not remove the battery immediately after long period of continuous use. The battery becomes hot during use. Touching a hot battery might cause burns.
- 6 Do not wrap the camera or place it in cloth or blankets. This might cause heat to build up and deform the case, resulting in fire. Use the camera in a well-ventilated place.
- 7 Do not leave the camera in places where the temperature may raise significantly, such as inside a car. This might adversely affect the case or the parts inside, resulting in fire.
- 8 Before you move the camera, disconnect cords and cables. Failure to do this might damage cord and cables, resulting in fire and electric shock.
- 9 Handling the USB on this product may expose you to lead, a chemical know to the State of California to cause birth defects or other reproductive harm. Wash hands after handling.
- 10 Download stored images to your PC soon after images captured.
- 11 When camera is not in your native language, enter SETUP and look  icon and switch to your preferred operating language.
- 12 ALWAYS use a wrist strap to avoid dropping the camera.
- 13 Clean the lens and LCD with damp cloth if needed.
- 14 Avoid scratching the lens at all times. It will cause permanent damage to image quality.

About FLASH Photography

- 1 The built-in flash has a maximum effective range of 2 meters and it is not meant to be used in very dark or bright environments.
- 2 The flash works best as a complementary light source for capturing images under shade, dim room lights or shooting against a moderate light source.
- 3 When using the flash, avoid shooting directly against strong light source. It may cause extremely abnormal exposures.
- 4 Do not fire the flash close to anyone's eyes.
- 5 Screen will turn black while the flash charges.
- 6 When battery level is low, the camera will beep and refuse to charge the flash. However, other functions can still be performed until the battery is fully drained.
- 7 While the flash is charging, the SHUTTER button is locked.

Notes on Battery Usage

- 1 Protect our environment and dispose of used batteries properly.
- 2 Use 1.5V AAA Alkaline or Ni-MH rechargeable batteries only.
- 3 To maximize performance and lifetime of rechargeable batteries, we recommend that you fully charge and fully discharge every new battery for at least one complete cycle before use.
- 4 To keep rechargeable batteries at optimal conditions, do not recharge before fully drained.
- 5 The batteries may leak and cause a fire, injury or soiling of the battery compartment. If the batteries leak, clean and wipe the battery compartment carefully and install new batteries. Wash your hands thoroughly if you touch the battery fluid.
- 6 Avoid using batteries in extremely cold environments as low temperatures can shorten the battery life and reduce digital camera performance. Low temperature will adversely affect alkaline battery performance.
- 7 If you will not be using the batteries for an extended period of time, remove them from the camera to prevent leakage or corrosion, and don't dispose them in fire.
- 8 Never use batteries of different types (together) or mix old and new batteries.
- 9 When battery level is low, LCD might flicker and/or flash cannot be charged.

Internal Memory vs. External Memory Card

- 1 On the 32MB Internal Flash Memory, there are 28MB of memory for storing captured images.

Resolution	Photo Size	28MB can hold about
5M	~1.4M	23 photos
4M	~1.1M	28 photos
3M	~0.8M	36 photos
2M	~0.5M	59 photos
0.8M	~0.2M	140 photos
0.5M	~0.1M	228 photos

- 2 Download all images to your computer without delay and backup periodically.
- 3 You may wish to expand the memory capacity of your camera using an SD memory card.
- 4 When buying an SD card, it is recommended that you bring this camera along to test compatibility .
- 5 When an external memory card is inserted, images will automatically be stored on the memory card rather than in the internal memory. Images stored in internal memory will not be accessible until the external memory card is removed.

C O N T E N T S

1 Driver Installation

2 Preparations for Use

- 2.1 Loading the Batteries**
- 2.2 Inserting a Memory Card**

3 Physical Features

- 3.1 Body & Buttons**
- 3.2 Display Icons**

4 Main Functions

- 4.1 Capturing Still Images**
- 4.2 Still Image Settings**
- 4.3 Capturing Video Clips**
- 4.4 Video Clip Settings**
- 4.5 Playback Mode**
- 4.6 Playback Options**
- 4.7 TV Playback**
 - Mass Storage) Please refer to**
 - PC Camera) 1 Driver Installation**

5 Setup

6 Specifications

- Install driver BEFORE connecting to your PC for the first time
- PC operating system required: Windows 98SE, 2000, ME or XP
- To use PC CAM function with any version of Windows, you must install the driver provided
- Driver installation is similar for the various Windows systems. When specifying the path, select the driver in the CD-ROM drive.
- The camera has two USB driver modes: TWAIN and MASS. MASS is the default setting.
- Either of 2 driver modes can be selected for the camera.
TWAIN mode uses the video components for the PC (Web Cam).
In MASS mode, the internal memory is used as mobile memory. It can be treated like a hard drive. You can copy, delete, cut and download photos and videos from the camera.
- Location of the drivers on the CD:
(Example: "F:\ " as the CD-ROM drive)
F:\Driver\mass-storage\Win98: MASS driver for Win 98
F:\Driver\Twain\win98_2k: TWAIN driver for Win 98 / 2000
F:\Driver\Twain\WinMe_XP: TWAIN driver for Win ME / XP
Photos should be downloaded directly in MASS mode. Select the correct driver mode before installing the driver.

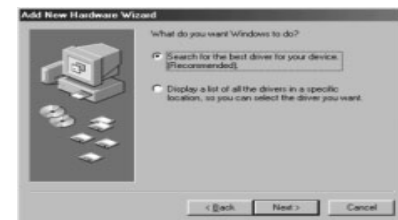
The procedure for installing the drivers for each of the two modes is described below.

1.1 Installing the driver in MASS mode

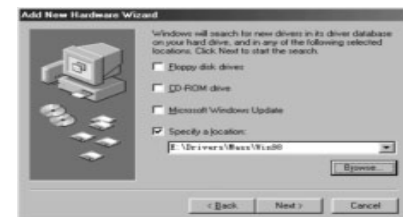
1.
When the camera is connected to the computer in MASS mode, the Found New Hardware Wizard appears on your PC monitor.
Click "Next" to open the next window



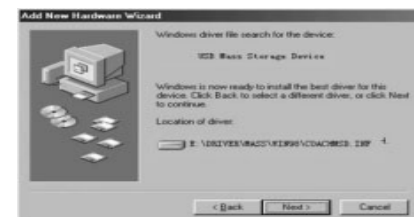
2.
Select "Search for the best driver for your device" (Recommended) and click "Next".



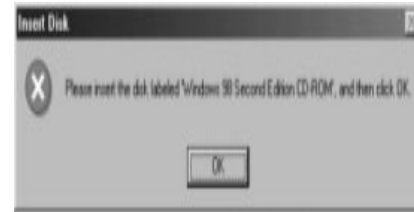
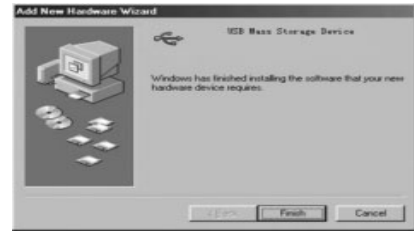
3.
Select "Specify a location" and click "Browse".
Specify the driver CD in your drive.



4
Now click "Next". The system installs the driver and the following window appears:



5. Click "Finish" to complete installation.



1.2 Installing the driver in TWAIN mode

1. Connect the camera to the computer. The system should automatically recognize that a new device has been connected.
2. In TWAIN mode, the driver must be installed for all systems. The procedure is similar to that described for Mass mode.

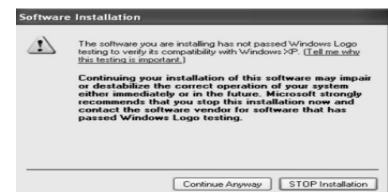
3. In Windows 2000, you may be asked about the digital signature of the driver. Click "Yes" to install the driver.



4. When installing the driver on Windows XP the Found New Hardware Wizard appears. Select "Install the software automatically." (Recommended).



The following window may appear. Click "Continue" and wait until the installation is complete.

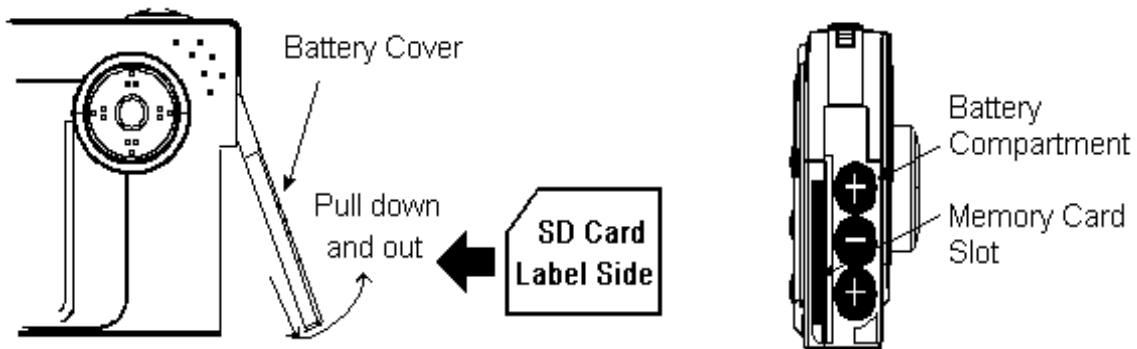


5. The installation procedure under Windows ME is similar.

2 Preparation for Use

2.1 Loading Batteries

- 1 Open the battery cover as shown
- 2 Load 3 AAA batteries with correct polarity as indicated inside battery cover “+ - +”

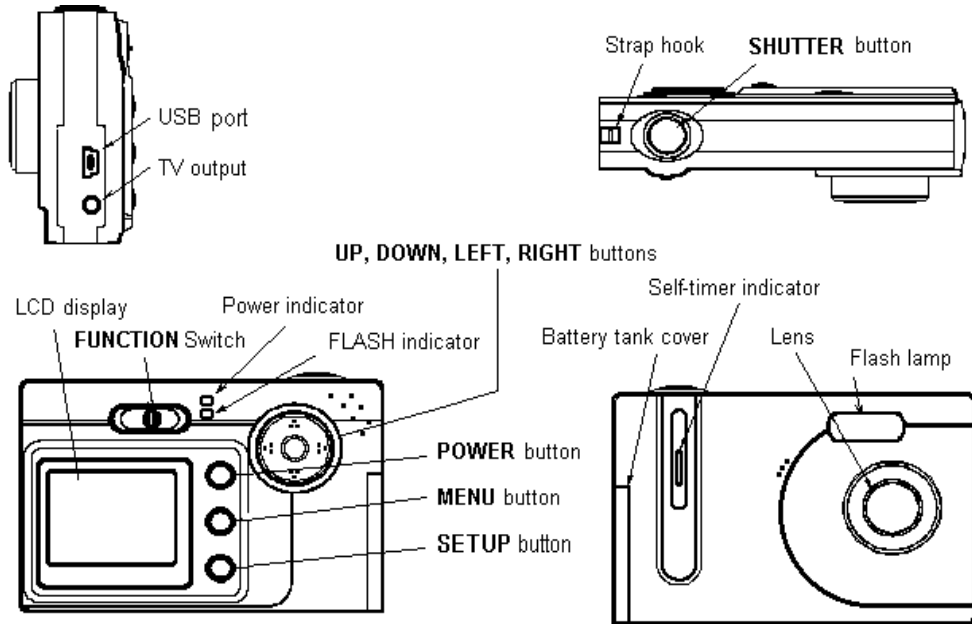


2.2 Inserting a Memory Card

- 1 Open the battery cover as shown
- 2 Insert an SD card into the slot in the indicated direction
 - Contact pins first and label side facing LCD display
- 3 Press the card gently into the slot, it will “click” into place
- 4 To remove a memory card, press gently on the edge of the card to eject

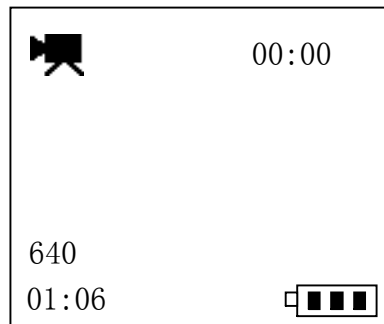
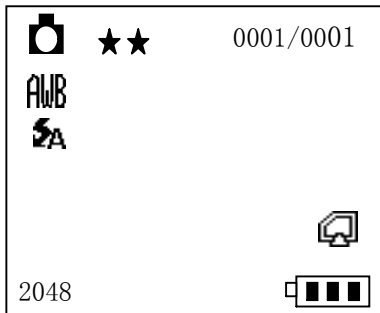
3 Physical Features

3.1 Body



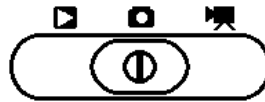
3.2 Display Icons

Press RIGHT button at STILL CAMERA & VIDEO CAMERA Modes to switch DISPLAY modes:
Normal >> Image Only >> Display Off



- 1 Battery Meter: Full battery Low battery
- 2 Picture Quality: Super, Fine, Normal
- 3 Capture Mode: STILL CAMERA VIDEO Camera
- 4 Memory Meter: SD Card Internal Memory (White area means available)
- 5 Number of images remaining (estimated according to current settings)
- 6 Still Image Resolutions: 0.5M, 0.8M, 2M, 3M, 4M, 5M
- 7 Burst Capture: 3 frames continuous capture (Resolution 1280X960)
- 8 Self-timer: 10 seconds
- 9 Flash Modes: Flash off Auto OFF
- 10 Video Clip Resolutions: QVGA 320x240 VGA 640x480

4.1 Capturing Still Images



- 1 Slide FUNCTION switch to the middle
- 2 Related Buttons & Definitions

Still Camera Mode

Button	Definition
FUNCTION SWITCH	Slide to Middle
SHUTTER	Capture
POWER	-----
MENU	Enter Menu / Exit
SETUP	-----
UP	ZOOM in
DOWN	ZOOM out
LEFT	Flash Mode Switch
RIGHT	Display Mode Switch

4.2 Still Image Settings

- 1 At STILL CAMERA Mode, press MENU button to enter Still Camera menu
- 2 Related Buttons & Definitions

Still Camera Menu

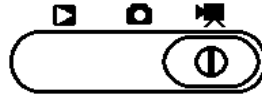
Button	Definition
FUNCTION SWITCH	Slide to Middle
SHUTTER	-----
POWER	-----
MENU	Enter Menu / Exit
SETUP	-----
UP	UP
DOWN	DOWN
LEFT	LEFT
RIGHT	RIGHT

NOTE: Simply EXIT menu to confirm your selections

- 3 Resolution: 3M, 4M, 5M
- 4 Exposure: -2 to +2 step 0.5 (+EV brightens -EV darkens)
- 5 White Balance: AWB Auto Sunny Cloudy
 Tungsten Fluorscent1 Fluorscent2
- 6 Burst Capture: Single 3 Frames continuous capture
- 7 Self Timer: Off 10 15 20 seconds
- 8 Time Stamp: Off Date Only Date & Time

4.3 Capturing Video Clips

- 1 Slide FUNCTION switch to the Right
- 2 Related Buttons & Definitions



Video Camera Mode

Button	Definition
FUNCTION SWITCH	<i>Slide to Right</i>
SHUTTER	Start / Stop Capture
POWER	-----
MENU	Enter Menu / Exit
SETUP	-----
UP	ZOOM in
DOWN	ZOOM out
LEFT	Flash Mode Switch
RIGHT	Display Mode Switch

4.4 Video Clip Settings

- 1 At VIDEO CAMERA Mode, press MENU button to enter Video Camera menu
- 2 Related Buttons & Definitions

Video Camera Menu

Button	Definition
FUNCTION SWITCH	<i>Slide to Right</i>
SHUTTER	-----
POWER	-----
MENU	
SETUP	-----
UP	UP
DOWN	DOWN
LEFT	LEFT
RIGHT	RIGHT

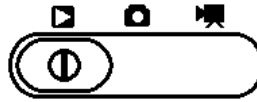
NOTE: There is no need to press any other buttons to confirm your selections. Press MENU button to exit when finished selecting.

- 3 Resolution: QVGA 320x240 VGA 640x480
- 4 Exposure: (See *Capturing Still Images*)
- 5 White Balance: (See *Capturing Still Images*)

4 Main Functions

4.5 Playback Mode

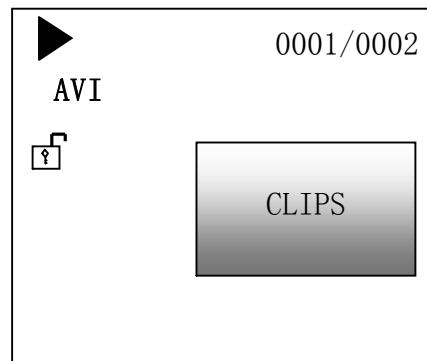
- 1 Slide FUNCTION switch to the left
- 2 Related Buttons & Definitions




Playback Mode

Button	Definition	
FUNCTION SWITCH	<i>Slide to Left</i>	
SHUTTER	Enter THUMBNAIL Mode	
POWER	-----	
MENU	Enter Menu / Exit	
<i>Record Type</i>	IMAGES	VIDEO CLIPS
UP	ZOOM in	Playback Toolbar RIGHT
DOWN	ZOOM out	Playback Toolbar LEFT
LEFT	Previous Record	
RIGHT	Next Record	

3 Display Icons






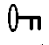

- Photo: While loading record, the  icon will appear
When enlarged 4 times, use the directional keys to move around
- Video: Use SHUTTER button to move along VIDEO Playback Toolbar

4.6 Playback Options

- 1 At Playback Mode, press MENU button to enter Playback Menu
- 2 Related Buttons & Definitions

Playback Menu

Button	Definition
FUNCTION SWITCH	<i>Slide to Left</i>
SHUTTER	CONFIRM OK
POWER	-----
MENU	Enter Menu / Exit
SETUP	-----
UP	UP
DOWN	DOWN
LEFT	LEFT
RIGHT	RIGHT

- 3 Slide Show:  Recorded images will play automatically in loop
- 4 Delete Record:  Press SHUTTER button twice to confirm delete
- 5 Delete ALL:  Press SHUTTER button twice to confirm delete
- 6 Lock / Unlock:  Locked records cannot be deleted
- 7 Print Stamp:  DROF function

4.7 Thumbnail Mode

- 1 At Playback Mode, press SHUTTER button to enter Thumbnail Mode
- 2 Related Buttons & Definitions

Thumbnail Mode

Button	Definition
FUNCTION SWITCH	<i>Slide to Left</i>
SHUTTER	Select to View
POWER	-----
MENU	Enter Menu / Exit
SETUP	-----
UP	UP
DOWN	DOWN
LEFT	LEFT
RIGHT	RIGHT

5 SETUP

- 1 Press SETUP button
- 2 Related Buttons & Definitions

SETUP Menu

Button	Definition
FUNCTION SWITCH	- - - - -
SHUTTER	OK
POWER	- - - - -
MENU	Cancel
SETUP	Enter / Exit SETUP
UP	UP
DOWN	DOWN
LEFT	LEFT
RIGHT	RIGHT

- 3 Date and Time Setting :
- 4 Language: English, French, Spanish, Portugues,Dutch & Chinese
- 5 Status Locn On/OFF/Exit
- 6 Ntsn/PAL Ntsc/PAL/Exit
- 7 Format Yes/No
- 8 FactoryReset Yes/No
- 9 Driver Type TWAIN/MASS/PICTURE BRIDGE/Exit
- 10 Light Frequency 50HZ/60HZ/Exit
- 11 Version XXXXX

Note: When camera is turned off, default settings will automatically be restored except:
Resolutions, Date & Time, Language, TV System, USB Mode, Auto Power Off, Light
Frequency

6 Specifications

Maximum output pixels	2560 x 1920
Effective (sensor) pixels	2048 x 1536
Lens	F/2.8 4-element optical lenses
	Focal length - 1.2m ~ ∞
	Angle of view 52°
Image resolutions	2560 x 1920 5M Interpolated
	2272 x 1712 4M Interpolated
	2048 x 1536 3M 1600 x 1200 2M
	1024 x 768 0.8M 800 x 600 0.5M
Video Clip resolutions	320 x 240 QVGA 640 x 480 VGA
Exposure Control	- 2.0 to + 2.0 EV in steps of 0.5 EV
Shutter speed	1/10 ~ 1/1000
Zoom	8 X Digital
Internal Memory	32MB Nand Flash + 16MB (8X16) SDRAM
External Memory	This camera takes SD Card up to 2 GM
Color depth of still images	24 bits
ISO sensitivity	ISO100 ~ 400 equivalent
Self-timer	10, 15, 20 seconds duration
Built-in flash	Guide No. - GN4 Flash range: Max 2 Meters / 6 feet
Supported Languages	English, French, Spanish, Portugues,Dutch &Chinese
PC System required	98SE, ME, 2000, NT or XP
Software (on CDROM)	ArcSoft Photo Impression V5 & Video Impression V2
Interface	USB
TV Out	Video only
PictBridge	For Pictbridge-compatible printers only
Power Supply	3 1.5V AAA Alkaline or Ni-MH rechargeable batteries
Dimensions	88 x 60 x 30.5 mm
Weight	84 grams (without batteries & SD Card)

FCC WARNING: This equipment has been tested and found to comply with the limits for a Class B digital device, pursuant to part 15 of the FCC Rules. Only the cable supplied with the camera should be used. Operation with other cables is likely to result in interference to radio and TV reception and could void the user's authorization to operate this equipment. These limits are designed to provide reasonable protection against harmful interference in a residential installation. This equipment generates, uses and can radiate radio frequency energy and, if not installed and used in accordance with the instructions, may cause harmful interference to radio communications. However, there is no guarantee that interference will not occur in particular installation. If this equipment does cause harmful interference to radio or television reception, which can be determined by turning the equipment off and on, the user is encouraged to try to correct the interference by one or more of the following measures: Reorient or relocate the receiving antenna. Increase the separation between the equipment and receiver. Connect the equipment into an outlet on a circuit different from that to which the receiver is connected. Consult the dealer or an experienced radio/TV technician for help.

GUARANTEE: 1 year limited guarantee. We will replace or repair free any defective parts. For guarantee service, send product to: Global Point Products, 5815 County Road 41, Farmington, NY 14425 U.S.A. Enclose a check or money order for \$5.00 to cover handling charges and postage. Pack the product well and insure it.

If you have a problem, DO NOT RETURN THE CAMERA TO THE RETAILER. Contact our Customer Service Department for immediate assistance at (800) 367-0732 Extension 27. Monday through Friday 10:00 AM - 4:00 PM EST.

WARNING: The Digital Camera stores high voltage electricity inside; never attempt to open or dismantle the Digital Camera to avoid electric shock. Do not dispose the batteries in fire.

CAUTION: Never leave the Digital Camera in a damp or dusty place. Remove all the batteries when storing the Digital Camera. Keep any packing bags away from children. Packing bags cause choking hazard for children when placed over mouth or nose.