

FEATURES

- 10' ceilings on main floor and 9' ceilings on second floor
- French doors leading to large, covered side porch
- Upstairs sleeping porch off master suite # 2
- 4 bedrooms, 3.5 baths
- Carriage house: detached 2 car garage with unfinished studio above
- Hardwood flooring
- Open kitchen with custom cabinets, solid surface counter tops and serving bar
- Silent floor system

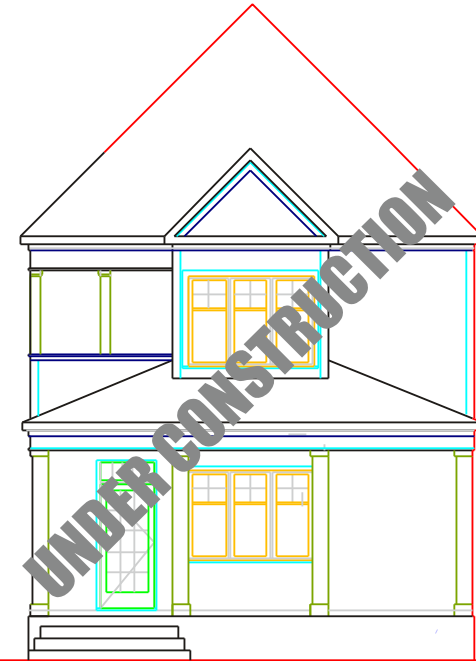


COPYRIGHT DECEMBER 2005
THE TOWN OF MT LAUREL

&

EBSCO DEVELOPMENT Co., Inc.
5 Mt LAUREL AVENUE/SUITE 205
BIRMINGHAM, ALABAMA 35242 205.408.TOWN
WWW.MTLAUREL.COM

THE AMENITIES AND FLOOR PLANS OF
FINISHED HOMES MAY VARY FROM THE PHOTOGRAPHS
AND DIAGRAMS SHOWN ON THIS FACT SHEET.



Dover II Sideyard Large cottage

DETAILS at a GLANCE

Conditioned space	
First floor	1,686 s.f.
Second floor	1,006 s.f.
Porches	677 s.f.
Garage	567 s.f.
Total:	3,936 s.f.

The Town
of

MT LAUREL

Cottages & Homes from \$349,000 to \$750,000

For specific prices on other Mt Laurel Cottages & Homes,
please visit our Sales Center located in the
Snickelway of the Robinson Building, in the Mt Laurel Town Center