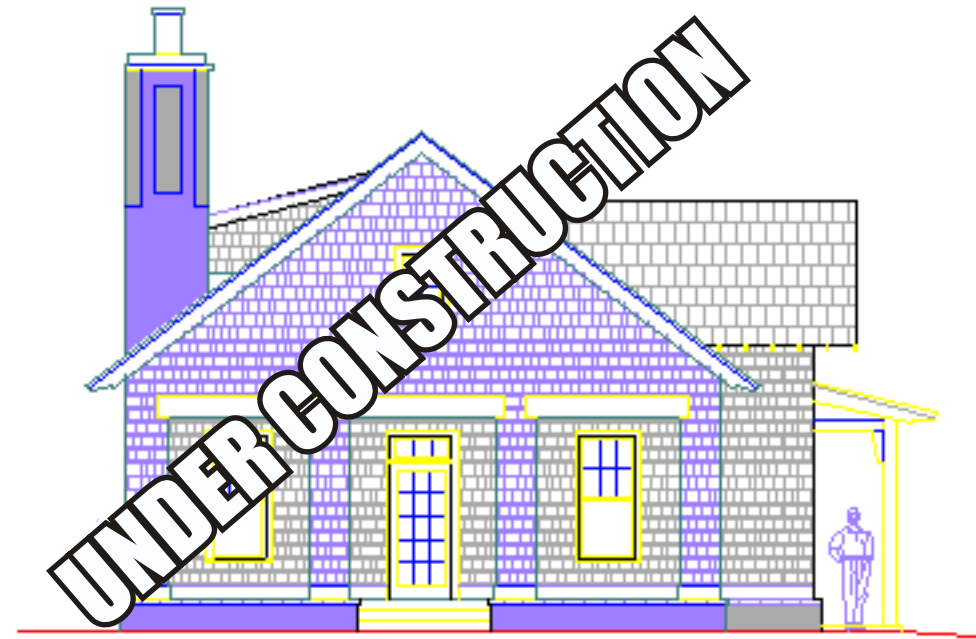


## FEATURES

- 10' ceilings
- French doors leading to large, covered side porch
- 3 bedrooms, 2.5 baths
- Carriage house: detached 2 car garage with unfinished studio above
- Hardwood flooring
- Open kitchen with custom cabinets, solid surface counter tops and serving bar
- Silent floor system



COPYRIGHT DECEMBER 2005  
THE TOWN OF MT LAUREL

&

EBSCO DEVELOPMENT Co., INC.  
5 MT LAUREL AVENUE/SUITE 205  
BIRMINGHAM, ALABAMA 35242 205.408.TOWN  
WWW.MTLAUREL.COM

THE AMENITIES AND FLOOR PLANS OF  
FINISHED HOMES MAY VARY FROM THE PHOTOGRAPHS  
AND DIAGRAMS SHOWN ON THIS FACT SHEET.

## Hawthorn Large cottage

DETAILS at a GLANCE

Conditioned space	
First floor	2,214 s.f.
Porches	450 s.f.
Garage	483 s.f.
Total:	3,917 s.f.

The Town  
of

MT LAUREL

Cottages & Homes from \$349,000 to \$750,000

For specific prices on other Mt Laurel Cottages & Homes,  
please visit our Sales Center located in the  
Snickelway of the Robinson Building, in the Mt Laurel Town Center