

Razor X5 Climbing bar installation instructions

Qty	Description	Part Number
8	1/8" short plastic bushings	10641
4	7/16" tall plastic bushings	10640
2	2" long 1/4 20 bolts (7/16" head size)	10606
2	1 3/4" long 1/4 20 bolts with flange (3/8" head size)	10689
2	3/4" long 1/4 20 bolts	10605
6	1/4 20 lock nuts	10612
2	1/2" by 15/16" nylon spacer	10688
2	1/4" tall metal bushings	10693
2	Keyhole brackets	10466

Step 1. Insert two of the 7/16" tall plastic bushings in each of the two holes in the climbing bar (See Figure 1.)

Step 2. Insert two of the 1/8" short plastic bushings in the outside holes on the U bracket attached to the seat climber (See Figure 2.)

Step 3. Using one 2" long bolt and one lock nut, attach the climbing bar to the U shaped brackets on the seat climber. The bracket on the climbing bar must face up (See Figure 3 and 4.) Repeat for other side.



Figure 1



Figure 2



Figure 3

Step 4. Insert one of the 1/8" short bushings into the outside of the hole on climbing bar's welded bracket. Insert another 1/8" short bushing into the hole on the keyhole bracket. Use one 3/4" long bolt and one locking nut, attach the keyhole bracket to the welded on bracket. Keyhole bracket must attach to the outside (See Figure 5.) Repeat for other side.

Step 5. Slide the 1/4" tall metal bushing down on the 1 3/4" shoulder bolt as shown in Figure 6. The washer side of the metal bushing should sit flush on the stand tubing. Slide the supplied 15/16" bushing into the end of the seat climber tubing and line it up with the pre-drilled holes. You may have to remove some metal flash from around the pre-drilled holes. This can easily be done with a flat head screw driver. This step is easier to do if the stand is laying on its side. Insert the shoulder bolt into the hole at the end of the seat climber tubing and through the 15/16" spacer. The head of the bolt **must** be on the outside of the stand. Use one 1/4 lock nut to secure the bolt - DO NOT over tighten (See Figure 6, 7 and 8.) Repeat for other side.



Figure 4



Figure 5



Figure 6

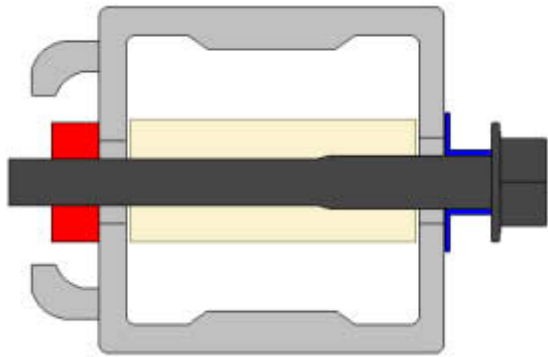


Figure 7

1/4" metal bushing shown in blue, 15/16" spacer shown in tan, lock nut shown in red.



Figure 8

Step 6. Rotate the climbing bar up and move keyhole brackets over shouldered bolt head to lock the bar in the upright position (See figure 9 and 10).



Figure 9



Figure 10