



# Viper™ SS

**SUMMIT**  
EST. 1981  
TREESTANDS

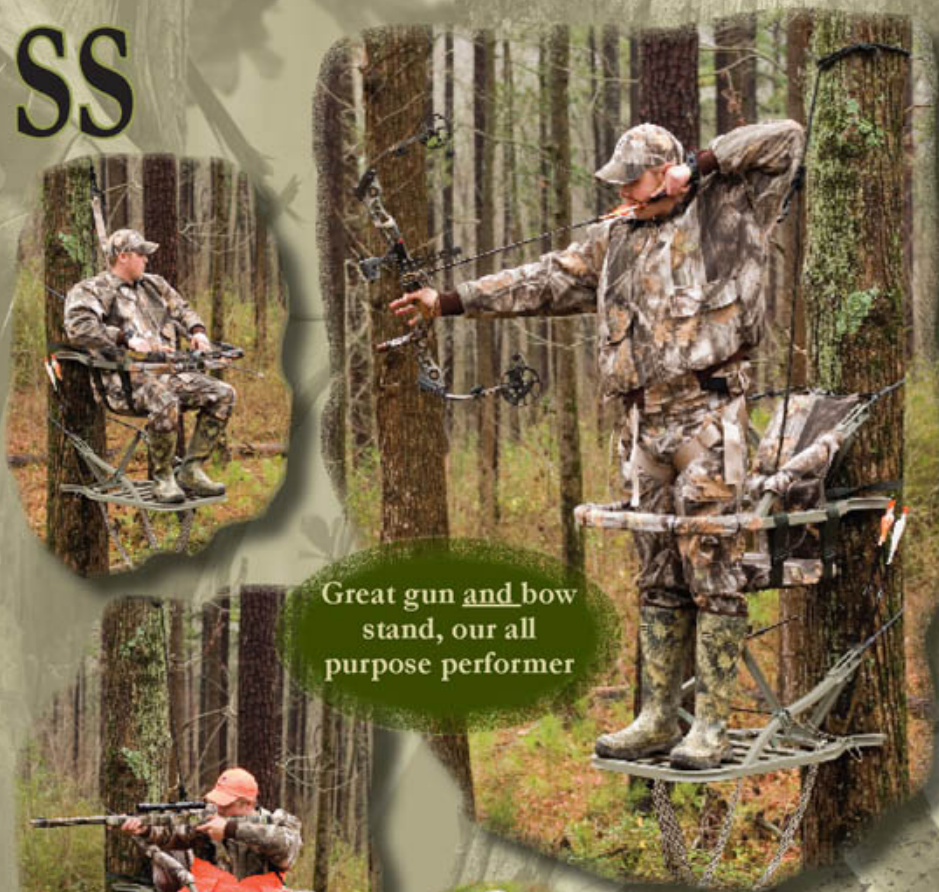
Silent. Secure. Concealed.  
Comfortable.

Our motto has been the driving force behind all of our treestand design for over twenty five years and it shows in every stand we build. The Viper™ SS from Summit is the flagship in our long and successful climbing treestand line, and it packs all of our latest innovations. Of course we still use our proven SummitLokt construction which mechanically “locks” the stand together, and we still apply a tough powder coat finish to our welded aluminum frame. Combine those features with our patented\* RapidClimb™ stirrups and our patented\*\* Quick Draw™ cable retention system we bring you nothing less than the state of the art in climbing treestands.

The new Next Camouflage G1, on the comfort pads and on the custom-designed seat, will keep you hidden while you stay comfortable. The Viper™ SS from Summit... all the tradition and trust, plus the best new features, in one complete package.

\*Patent Pending

\*\*Patent No. 5,975,242



Great gun and bow stand, our all purpose performer



# Razor™ SS

Do you need a sit-down stand-up climber but you've always been an open front hunter? Then we've got the solution: it's the Razor™ SS from Summit. If you're tired of wrestling with hand-climbers but want the freedom of an open-front climbing treestand, the new Razor™ SS fills the bill. Just secure the climbing bar and go, then fold it up under you and out of your way to hunt. Comfort has never been taken lightly at Summit, so you can count on this stand to be all-day comfortable. Custom foams in the seat are specifically designed to assure complete satisfaction while sitting and it won't “bite” the sides of your legs. We use adjustable seat straps so you can set the seat height to your preferences, not a “factory-selected” preference. Our custom arm rests and pads are designed to eliminate fatigue in the neck and shoulders. We also covered the seat and arm pads with Next Camouflage G1 for concealment, so you can be sure this is a top line stand.

This year use the Razor™ SS to hunt where you want, the way you want. The new Razor™ SS from Summit... all of what you want, none of what you don't.

next®

**FIVE**  
YEAR LIMITED  
WARRANTY

THE TREESTAND MANUFACTURERS ASSOCIATION  
**TMAA**  
Promoting Treestand Safety







# Ultimate Viper™ SS

Ultimate means that there is none better. Summit knows what it means to be the ultimate treestand manufacturer, and our new Ultimate Viper™ SS is the top of the heap in comfort and features, all of which will make you even more silent, secure, concealed, and comfortable than ever before. We've taken our standard Viper™ and added a fully adjustable gun rest, a thick camouflage covered platform comfort mat, and a custom camouflage blind that's easy to deploy and store. As if that wasn't enough, we've also included our new Next Camouflage G1 Surround Seat which completely supports you, even on the sides, and uses integrated pouches so you can keep everything you need within reach.

Every feature you've always wanted and more!

This amazing stand includes all of the best treestand additions to give you every advantage in the woods. The Ultimate Viper™ SS from Summit, it's the best of the best...bar none.



next®

## Summit Skin Included



Our custom designed tough new sound dampening laminate includes a Next G1 topcoat and an automotive grade adhesive for total silence.

Climbing bar swings under for open front shots!







# Summit 180°™ SS

SUMMIT  
EST. 1991  
TREESTANDS



Reversible seat means it's your choice



next



The Summit 180°™ SS is our best stand to eliminate looking over your shoulder. This unique climbing top section allows multiple seating positions so you don't have to choose. Never has climbing been easier or hunting more comfortable than with this versatile stand. You climb seated in the seat (not on the front bar) using the stand-up, sit-down method, then choose which way you want to face. Gun hunters may want to face the tree, and bowhunters may opt to sit facing away. Either way, you're super-comfortable. Our removable seat has a solid core back rest for comfort on those all-day rut hunts. The top section also has a rounded front bar so it is longer which means more leg room.

The Summit 180°™ SS...from its tree-gripping grip strips to its 8,000 pound cable that secures it to the tree, you'll be satisfied, stealthy, secure and successful.

# Summit 180° MAX™ SS

Are you a little taller than most? Are you a little wider than most? Are you both taller and wider? Well Summit has been at the drawing board and we've come up with a stand we know you will want. The new Summit 180° MAX™ SS is yet another example when "bigger is better". We've added two inches to the top section width and extended the top section length to give you our largest overall climbing stand. It comes standard with our patented\* RapidClimb™ stirrups so there is no more bending over to attach boot straps. It has thick padded arm rests and that same pad runs the entire length of the top section. We've also included the new ultra comfortable Surround Seat which can be removed and set either facing the tree or away. The Summit 180° MAX™ SS top section is rated for up to 350 lbs. and is specifically designed for the bigger hunter.



## Summit Skin Included



Our custom designed tough new sound dampening laminate includes a Next G1 topcoat and an automotive grade adhesive for total silence



\*Patent Pending

The Summit 180° MAX™ SS doesn't just fit, it fits like it was made for you, the bigger hunter.



The Summit Goliath™ SS is a full featured stand that is also full-sized. This stand ends your search for a great climbing and hunting stand that fits a bigger hunter. The full-sized hunter will appreciate a beefed up top section able to support up to 350 pounds.

# Summit Goliath™ SS



Get a look at that top section, it's two inches wider than normal which means you'll stay comfortable so you'll be able to hunt longer. Our patented\* RapidClimb™ stirrups mean you don't have to bend over to pull on boot straps and our legendary comfortable seat and arm pads come standard so you won't need to add a thing. Plus, this stand is designed and built tough, expressly for the bigger hunter so when we say we've got the stand for you... we mean it.

We are a manufacturing member of the TMA, and this stand is TMA-tested so you can finally feel secure that you're in a stand designed with you in mind.



An oversized Viper with LOTS of ROOM!



\*Patent Pending



Huge, comfortable and Reversible



FIVE YEAR LIMITED WARRANTY







# Bullet SS Backpacker™

The Bullet Backpacker™ SS is Summit solid, Summit stable, Summit quiet AND it folds flat.

Comfort? We're famous for it. Thick cushions in the seat and back rest give you the best seat in the woods. It's also tapered on the sides so it doesn't "bite" into your legs. Value? Check out the other stands available that fold flat. Feature for feature, why would you buy anything else? NOTHING compares to a Summit. Thick padded arm rests and a padded front bar are standard as well as our patented\* RapidClimb™ stirrups. Nylon bushings at the pivot points and a threaded, tethered knob, not a pin, make the Bullet SS strong and silent.

The Bullet Backpacker™ SS. It's got all of the good stuff you've come to expect from Summit, in a stand that folds flat.

\*Patent Pending



A Folding Viper that packs FLAT!



# Broadhead SS Backpacker™

What would be your dream open front stand? Would it be ultimately portable; would it be bowhunter-friendly? The Summit Team wraps up all of these qualities in a package we call the Broadhead Backpacker™ SS. With its comfort and compactness you're able to go in farther and stay longer than with any other treestand. We include our famously comfortable seat and padded arm rests along with our patented\* RapidClimb™ stirrups to make sure the Broadhead Backpacker™ SS is ready to hunt. Shoulder friendly ErgoArms eliminate fatigue keeping you comfortable longer.

The Broadhead Backpacker™ SS. An open-front, flat-folding treestand that gives you the flexibility you need when whitetail patterns change.

Open front,  
Folds FLAT  
What else could  
you want?





# Openshot™ SS

It's ultra compact. It's ultra lightweight. It's the OpenShot™... a climbing treestand taken to a new level.

With its integrated seat/hand climber, the OpenShot™ makes a great addition to your treestand arsenal. Either sit on the seat at hunting height, or spin it around and out of your way for the ultimate whitetail perch. Do you like to shoot from a seated position? No problem. Any way you choose, you're totally silent and supremely secure. This extreme stand weighs in at a mere 14 lbs., but it hunts Summit solid. We use our same patented\*\* and proven Quick Draw™ cable system and our patented\* boot strap eliminating RapidClimb™ stirrups to ensure a dependable, easy to use treestand.

It doesn't matter how far you've got to hike... the OpenShot™ will let you get there. And once you're there, the whitetail world will be right at your feet.

\*Patent Pending  
\*\*Patent No. 5,975,242



Lets you pack, climb and hunt where no one else can!



**FIVE**  
YEAR LIMITED  
WARRANTY

**S**  
SUMMIT  
EST. 1981  
TREESTANDS





# Deer Deck Lite™

Last year we introduced a hang-on stand with an enormous platform. We tried to match the size of the platform to the name and called it the Deer Deck™. If you've ever imagined standing on your back deck to hunt, well this is about as close as it gets. This stable steel platform uses our new hanging system which attaches a two post steel backbone with two high strength ratchet straps. Our thick padded seat is Summit comfortable and will push easily back out of the way when you stand.

## Deer Deck™

Dual ratchet straps for the ultimate in hang-on stability!

Our Deer Deck Lite™ is the lighter version of our Deer Deck™. Our full sized, welded aluminum platform is the same type we use on our climbing stands. The thick padded seat is plenty comfortable and the cable design allows you to adjust the platform so it's level.

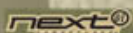
With two ratchet straps and a welded aluminum platform, you can be sure this is one stable hang-on setup.

Make no compromises, choose the Deer Deck Lite™ and get it ALL.

The perfect tree to climb. Rare these days. Sometimes you just have to use a hang-on. Why not try a Copperhead Compact™? Our unique system consists of a quiet strap (even stronger than big chains) and a receiver bracket on the stand. What does this mean? It means you can hang straps all over the woods and carry just one treestand. Multiple locations for minimal cash. At 12 pounds, the Copperhead Compact™ is a breeze to pack, and now it FOLDS FLAT. The seat folds down so you can use the included backpack straps to hike long and far. The Copperhead Compact™, an easy-hangin', hard-huntin' stand.

Light weight and simple to hang!

# Copperhead Compact™





Eighteen feet up. Slight wind out of the east. This is about as far from the corporate world as you can get.

The Single Shot™ combines our proven construction techniques with good value to give you a ladder stand which is beyond compare. It's simple to set-up, but it also includes the legendary Summit engineering know-how to keep it solid and stable.

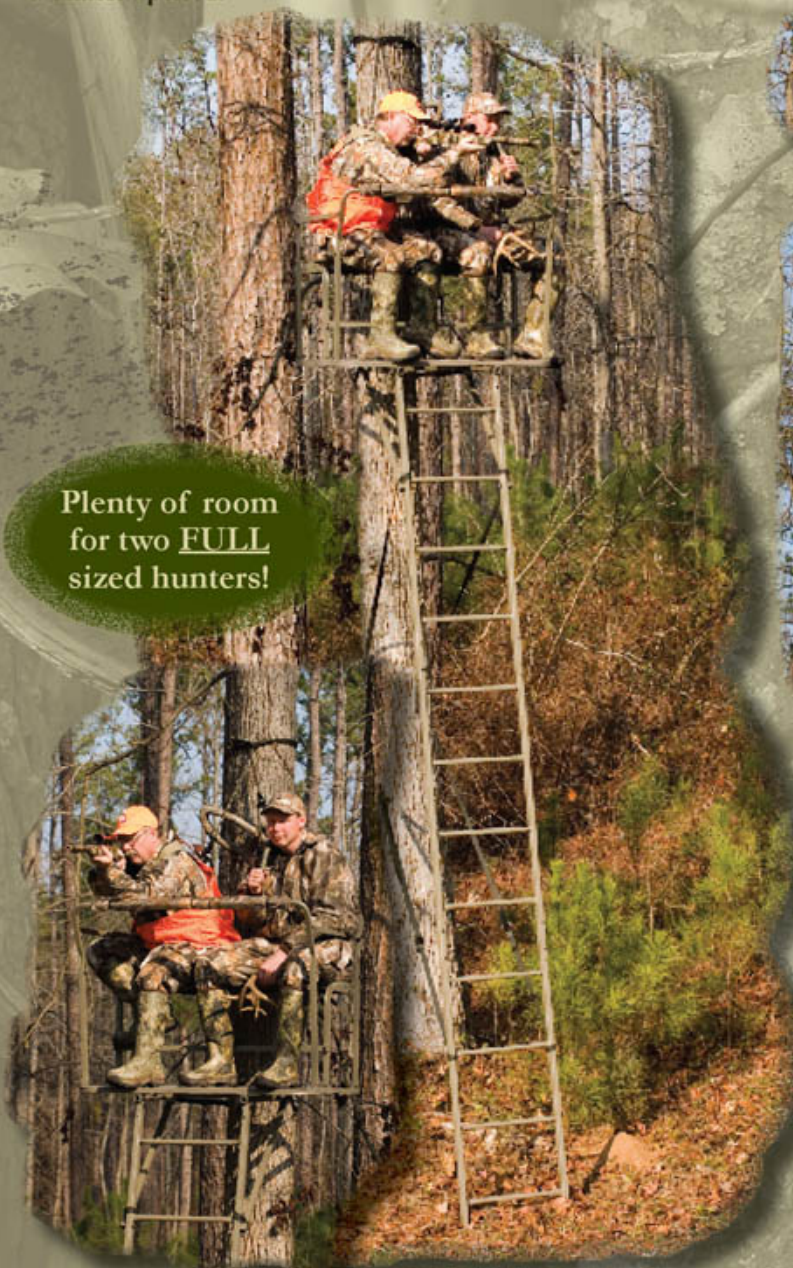
Our removable, and adjustable seat will keep you comfortable and still, two whitetail hunting attributes that go hand in hand. You'll hunt longer because your backside won't go to sleep and send you in early. Easy to setup and easy to climb into means you'll spend your valuable hunting time in the seat. Stop wondering whether you can make it another year in your existing stand, purchase a Single Shot™ and be Summit sure.

The Single Shot™ from Summit. The best ladder stand available...period.

# Single Shot™

18 Feet tall  
and  
ROCK Solid!

Plenty of room  
for two FULL  
sized hunters!



next®

The Double Barrel™ is Summit's solution to the old problem of putting two people in one great hunting spot. Using our engineering expertise, we have designed a two-person ladder that is rock solid. Using our hunting expertise we designed a seat, platform and ladder system that will keep two people comfortable and secure. The wide, thick padded bench seat, front rest, and back rest are all two people will need to spend a few hours, or the entire day. With two ratchet straps crossed behind the tree and one around the platform yoke this stand is secure.



**SUMMIT**  
EST. 1981  
TREESTANDS

# Double Barrel™

The Double Barrel™ from Summit...  
take someone hunting.





# X-Pod™

**SUMMIT**  
EST. 1981  
TREESTANDS

The right spot and the right tree, it's a constant struggle as whitetail patterns change. Now the odds are a little more in your favor. The newly redesigned X-Pod™ from Summit is a go anywhere, adapt to any location stand. It gives you a just right view in areas where putting up a hang-on or finding a good climbing tree is just not going to happen. In addition to the included ratchet tie off straps and anchors, this year we've also flared the rear legs for a wider, more versatile base. When it's time to hunt dense scrub or the edge of a cut-over and you struggle for the right stand, choose the X-Pod™ and put it right where you wanted it in the first place.



This past year we used our X-Pod™ all over to get a stand in those places where the right tree just couldn't be found. But we also realized that the same placement challenges we were trying to overcome with the X-Pod™ were there when we wanted to place a two person stand... and so the Double X-Pod™ was born. Ever wanted a two person stand alone platform with all the features needed to hunt all day? The new Double X-Pod™ lets you bring along someone to call, rattle or video without setting up another stand. It has two full Summit comfortable seats which can be adjusted independently. There's also a padded, fully adjustable gun rest all covered in Next Camouflage G1.

The Double X-Pod™, a great solution for two person hunting, without any compromise.



## Double X-Pod™

Hunt where YOU want to hunt!



Two independently adjustable seats for every size hunter!





# Predator Pod™

Do you want a new way to go after game this year? The Predator Pod™ from Summit is the answer when you need to be in the dense scrub, but off the ground. Think of all the cut overs, field edges, gullies and valleys you could open up if you had a way to get up off the ground, exactly when and where you needed. Solid climbing steps on one leg, and footrest steps on all the legs, means you'll find the perfect angle and adjustment. The swiveling seat and pivoting gunrest allow you to get into the stand quickly and move silently into position. Its wide tripod stance is stable and the clearance underneath lets you put it where most stands simply won't go.

You won't know how you missed all of all those great spots where the Predator Pod™ would be just right, until you own one.

The Predator Pod™ from Summit...now there's nowhere for game to hide.

Pack it into the most remote hot spots!



# Trophy Pod™

Summit is known for innovation and our new Trophy Pod™ is evidence to that tradition. We took everything we wanted in a hunting pod and packed it into one stand. The Trophy Pod™ is a 360° hunting machine with platform area all the way around. The swiveling seat is Summit comfortable and includes a fully adjustable, padded gun rest that will flip over your head and out of the way when it is not needed. All of the padded surfaces have Next Camouflage G1 including the arm rests. Pick a spot in the dense underbrush or right out in the middle of a group of seedlings, either way you'll be off the ground and in position for a great hunt.

The new Trophy Pod™ from Summit; it's custom made to go exactly where you never thought you would be able to place a stand.

Silently swivel 360° for the perfect shot!



SUMMIT  
EST. 1961  
TREESTANDS







SUMMIT  
EST. 1981  
TREESTANDS

# Bucksteps™

Patent Pending

Sneaky. Silent. Unseen. Sounds like a huge buck? Also sounds like Bucksteps™ from Summit.

More than likely, you've heard somebody talking about Bucksteps™. That's not surprising, since they're just the slickest thing to hit the whitetail woods in a long time. Bucksteps™ are big enough to get both boots on for hanging stands, but small enough not to be noticed. They'll hang just about anywhere too, which makes for some awesome thicket hunts.

Bucksteps™. They'll get you headed in the right direction to bag the buck of your dreams.



Light enough to pack in and move from tree to tree



A great value for ALL of your hang-on stands

## Steel Bucksteps™

Bucksteps™ are the undisputed leader when it comes to placing a hang-on stand in a tough tree. We've taken our successful design and created a steel step which means that now you can use Steel Bucksteps™ for all of your stands. You get all of the great features like rungs large enough to get both boots on, and quick hanging straps all in a value packed steel version.

Use Steel Bucksteps™ in thickets and overgrown areas where placing a climbing stick just won't work. Buy in bulk and open up some new hot spots all without breaking the bank.

Steel Bucksteps™ from Summit; it's how those who know access their toughest hang-on locations.



**FIVE**  
YEAR LIMITED  
WARRANTY

Look for our retail **Bulk Pack**



Enclosed, sure footing all the way to the top... that's what you get with the SwifTree™ Climbing Pole from Summit.

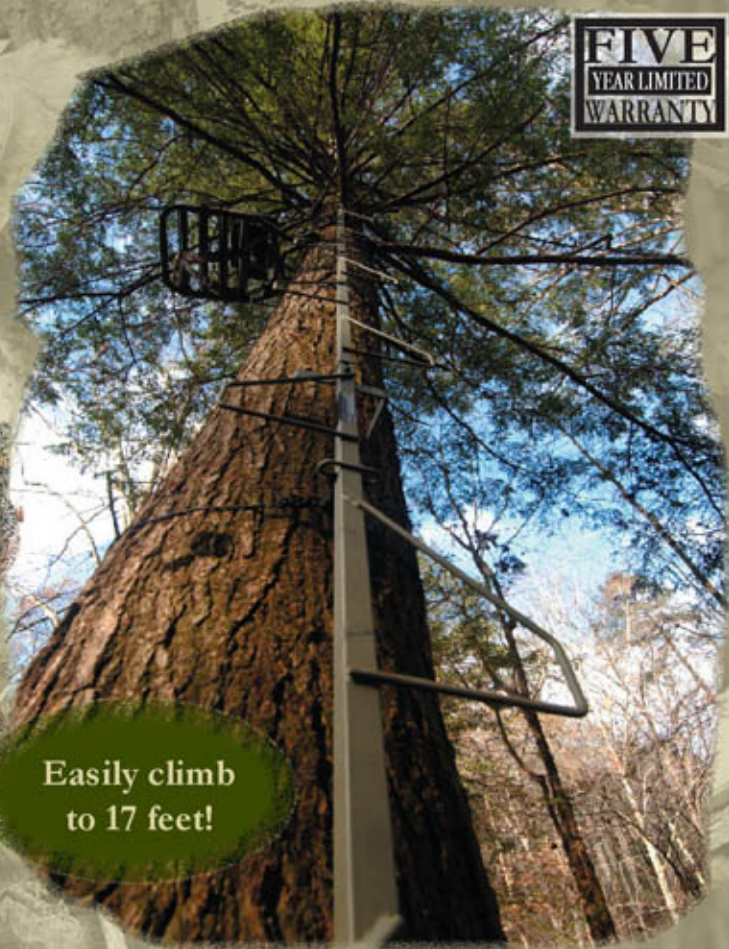
# SwifTree™

Patent Nos. Des. 417,011 Des. 420,147

Ever felt uneasy about climbing screw-in steps? So did we until we came up with the SwifTree™. The unique enclosed steps provide sure footing and help prevent your boot from slipping off of the side. Even in total darkness you can "feel" the correct place to step as you're climbing into or out of your hang-on stand. A backbone of rigid steel gives you a solid, stable climb, too.

The SwifTree™. It's a no-nonsense approach to successful whitetailing. Look for it this year and see if you don't agree.

**FIVE**  
YEAR LIMITED  
WARRANTY



Easily climb  
to 17 feet!

## Trophy Chair™

Patent No. 5,937,969

The perfect spot. Lots of sign. Big buck using the area. Not a tree within sight to climb. Try a Trophy Chair™.

This simple seat will open up a whole new way to hunt deer, turkeys, and lots of other stuff too. The possibilities are unlimited. The Trophy Chair™, with its padded arm rests, seat and back, hangs on a tree in seconds. Just sling the buckle around the tree and hang it. Leave it high, low or anywhere in between and stay comfortable for hours. No more squirming around on pickle buckets, stumps or rocks. Also great for ducks in flooded timber.

The Trophy Chair™. Use it once and you'll use it forever.

Folds FLAT  
for easy  
packing!



**FIVE**  
YEAR LIMITED  
WARRANTY

**S**  
SUMMIT  
EST. 1991  
TREESTANDS

next®



# 2007 Product Specifications

	Stand Type	Features / Accessories	Weight (lbs)	Construction	Maximum Weight Limit	Tree Size (diameter)	Seat Height Off Platform (in)	Height to Platform (ft)	Height to Shooting Rail (ft)
<b>Climbing Treestands</b>									
Viper™ SS	Sit/Stand, Closed Front	Standard dual purpose Gun / Bow stand	20	Aluminum	300	8-20"	Seat height and Platform height adjustable on all Climbers		
Viper™ SS Ultimate	Sit/Stand, Closed Front	Surround Seat including side padding and storage pouches, Blind, Gun Rest Bar, Comfort Mat and Summit Skin included as accessories	26	Aluminum	300	8-20"			
Summit Goliath™ SS	Sit/Stand, Closed Front	The same versatility as the Viper with an extra wide seat frame - Higher weight capacity	21	Aluminum	350	8-20"			
Razor™ SS	Sit/Stand, Open Front	Fold down climbing bar for easy climbing - Open front for great visibility	21	Aluminum	300	8-20"			
Summit 180°™ SS	Sit/Stand, Closed Front	Longer frame and reversible seat enable you to face toward or away from a tree	21	Aluminum	300	8-20"			
Summit 180° Max™	Sit/Stand, Closed Front	Same as above with wider frame and extra weight capacity, Surround seat and Summit Skin included as accessories	22	Aluminum	350	8-20"			
OpenShot™	Hand Climber, Open Front	Lightest climber we offer at only 14 lbs - Great visibility and very easy to transport	14	Aluminum	300	8-20"			
Bullet Backpacker™ SS	Sit/Stand, Closed Front	Similar to the Viper only with a folding frame for a smaller profile when packed	23	Aluminum	300	8-20"			
Broadhead Backpacker™ SS	Hand Climber, Open Front	True open front stand with a folding frame for a smaller profile when packed	21	Aluminum	300	8-20"			

\* All Summit Climbers include RapidClimb™ Stirrups, Quick Draw™ Cable system, Backpack straps, Full Body Harness and 5 Year Warranty.

## Ladders and Pods

Single Shot™	Ladder	Removable gun rest	92	Steel	300	8-20"	Adjustable	16'	18'
Double Barrel™	Ladder	Super wide frame for two people	115	Steel	250 X 2	8-20"	19.5"	14.9'	16.5'
Predator Pod™	Tripod	360 degree visibility, gun rest	40	Steel / Aluminum	300	n/a	n/a	n/a	6' (to seat)
Trophy Pod™	Tripod	360 degree visibility, moveable gun rest, arm rests, fully padded seat	95	Steel / Aluminum	300	n/a	21.5"	8'	Adjustable
X-Pod™	Free Standing Pod	Moveable gun rest	105	Steel	300	n/a	Adjustable	9'	Adjustable
Double X-Pod™	Free Standing Pod	Moveable gun rest, Super wide frame for two people	122	Steel	250 X 2	n/a	Adjustable	9'	Adjustable

## Hang-On Treestands

Copperhead™ Compact	Hang On	Folding frame for smaller profile when packed, unique strap system hangs in seconds	12	Aluminum	300	8-20"	22"	Platform height adjustable on all Hang on stands	
Deer Deck™	Hang On	Extra large platform, self leveling system, double heavy duty ratchet straps	18	Steel	300	8-20"	22"		
Deer Deck Lite™	Hang On	Light weight aluminum platform, self leveling system, double heavy duty ratchet straps	12	Steel / Aluminum	300	8-20"	22"		
Trophy Chair™	Tree Seat	Portable, light weight, multipurpose tree seat	6	Steel	260	8-30"	n/a	n/a	n/a

## Climbing Sticks

							Max height		
Bucksteps™	Climbing Aid	Lightweight, very mobile climbing steps	11 (set of 4)	Aluminum	260	8-20"	15'-17' depending on placement		
Steel Bucksteps™	Climbing Aid	Inexpensive and modular	20 (set of 4)	Steel	260	8-20"	15'-17' depending on placement		
Swiftree™	Climbing Aid	Inexpensive climbing ladder solution	18 (set of 3)	Steel	260	8-20"	17'		



Overall Platform Size	Usable Platform Area	Seat Frame Size (inside)	Seat Size	Seat Type	Harness Included?
20" wide by 36" long	20" wide by 28 3/4" long	19 3/4" wide by 26 1/2" long	(base) 18" wide by 12" long - (backrest) 12" wide by 20" long	Full Back Rest, Quick Release adjustable buckles - Padded arm rests	Y
20" wide by 36" long	20" wide by 28 3/4" long	19 3/4" wide by 26 1/2" long	(base) 18" wide by 12" long - (backrest) 12" wide by 20" long	Same as above, Sides and Storage pouches included - Padded arm rests	Y
20" wide by 36" long	20" wide by 28 3/4" long	21 3/4" wide by 26 1/2" long	(base) 18" wide by 12" long - (backrest) 12" wide by 20" long	Full Back Rest, Quick Release adjustable buckles - Padded arm rests	Y
20" wide by 36" long	20" wide by 28 3/4" long	19 3/4" wide by 26 1/2" long (climbing bar up)	(base) 18" wide by 12" long - (backrest) 12" wide by 20" long	Full Back Rest, Quick Release adjustable buckles - Padded arm rests	Y
20" wide by 36" long	20" wide by 28 3/4" long	19 3/4" wide by 32" long	(base) 18" wide by 12" long - (backrest) 12" wide by 20" long	Full Back Rest, Quick Release adjustable buckles - Padded arm rests	Y
20" wide by 36" long	20" wide by 28 3/4" long	21 3/4" wide by 32" long	(base) 18" wide by 12" long - (backrest) 12" wide by 20" long	Same as above, Sides and Storage pouches included - Padded arm rests	Y
20" wide by 32" long	20" wide by 24 3/4" long	19 3/4" wide by 14" long	(base) 16" wide by 10" long	Base Pad Only attached directly to climber - Padded arm rests	Y
20" wide by 36" long	20" wide by 28 3/4" long	19 3/4" wide by 26 1/2" long	(base) 18" wide by 12" long - (backrest) 12" wide by 20" long	Full Back Rest, Quick Release adjustable buckles - Padded arm rests	Y
20" wide by 36" long	20" wide by 28 3/4" long	19 3/4" wide by 18" long	(base) 18" wide by 12" long - (backrest) 12" wide by 20" long	Full Back Rest, Quick Release adjustable buckles - Padded arm rests	Y

18 1/2" wide by 38" long	18 1/2" wide by 23 1/2" long	20" wide by 26" long (with gun rest attached)	(base) 18" wide by 12" long - (backrest) 12" wide by 20" long	Full Back Rest, Quick Release adjustable buckles	Y
44" wide by 31" long	44" wide by 18.5" long	42" wide by 38" long	(base) 42" wide by 14" long	Base Pad Only, Removable - Padded backrest bar	Y X 2
n/a	n/a	n/a	(base) 18" wide by 12" long	Base Pad Only attached directly to seat pan - Padded backrest bar	N
7" wide	7" wide	n/a	(base) 18" wide by 12" long - (backrest) 12" wide by 20" long	Full Back Rest attached directly to frame - Padded arm rests	N
20 3/4" wide by 18 1/2" long	20 3/4" wide by 18 1/2" long	21" wide by 33" long (with gun rest level)	(base) 18" wide by 12" long - (backrest) 12" wide by 20" long	Full Back Rest, Quick Release adjustable buckles	N
44 1/2" wide by 18 1/2" long	44 1/2" wide by 18 1/2" long	44" wide by 33" long (with gun rest level)	(base) 18" wide by 12" long - (backrest) 12" wide by 20" long	2 X Full Back Rest, Quick Release adjustable buckles	N

20" wide by 36" long	20" wide by 28 3/4" long	n/a	(front) 4" wide by (back) 18" wide - 12" long	Base Pad Only attached directly to frame - Folds against tree when not in use	Y
24" wide by 36" long	24" wide by 30" long	n/a	(base) 18" wide by 12" long	Base Pad Only attached directly to frame - Folds against tree when not in use	Y
20" wide by 36" long	20" wide by 24 3/4" long	n/a	(base) 18" wide by 12" long	Base Pad Only attached directly to frame - Folds against tree when not in use	Y
n/a	n/a	19 3/4" wide by 12" long	(base) 18" wide by 12" long - (backrest) 12" wide by 20" long	Full Back Rest attached directly to frame - Padded arm rests	N

Step size	Individual section height				
Step width 7 3/4"	20"	n/a	n/a	n/a	N
Step width 7 3/4"	20"	n/a	n/a	n/a	N
Step width 6"	68"	n/a	n/a	n/a	N



# Seat-O-the-Pants™ Harnesses

Patent No. 6,125,966



Seat-O-The-Pants. Each and every time safety and treestands come up, you'll hear this name. That's because there is no better full-body harness available.

If you've ever been to a hunting show and have seen Keith Jones jump out of a tree, you'll appreciate the hunting expertise and engineering that go into each and every SOP product. Shock-reducing tethers, new easy-to-use buckles, and silent operation keep the SOP name at the forefront of treestand safety. Innovations like a high tether so you're able to wear it under or over your hunting clothing, mean SOP is the leader in harness design.

It doesn't matter whether you're a first-time hunter or a seasoned veteran, the Seat-O-The-Pants line will keep you safe.

The Fastback Deluxe includes everything that makes wearing an SOP harness the most comfortable, versatile and safe harness on the market. With a shape molding liner, this harness looks like harness even when no one is wearing it which means you can pick it up, put it on and go. It also incorporates a clever clip system which will allow you to add one of many optional custom cases and pouches just by sliding them into place. When you get in the stand just clip them free and hang them where you need them.

The new SOP Fastback Deluxe, clever, comfortable, easy to use and secure; get one for yourself and anyone you want to keep safe.



**Fastback™  
Deluxe**



Shown with  
Optional  
Cases for  
Integrated  
Clip System

Shoot 360° with  
NO HARNESS INTERFERENCE!!!



Unique patented\*  
prussic hitch  
assembly gives you  
a totally adjustable  
safety line...adjust  
it to YOUR needs.

\*Patent Pending





### The Fastback™

The SOP Fastback has all of the features of the regular SOP harness... with a unique spin. It has an integrated mesh back that keeps it from tangling. No more fighting with unruly straps; just pick it up by the tether and put it on.



All SOP harnesses feature rubber-coated D-rings for use as a lineman-style climbing belt. It's great for hanging stands and trimming lanes.



### The Supreme

The SOP Supreme is designed for hunters who just don't like the thought of ANY straps to deal with on a full-body harness. It has the features of the regular SOP harness all packed into a design that is light weight, tangle-free, and comfortable to wear. It also has a large pocket for stowing extra safety ropes or other gear.



### The SOP

The SOP has all the features you look for in fall protection. It's quiet, it's comfortable, it's easy to use and it will keep you from hitting the ground. Just one more thing; the design of the leg straps means they won't bite you (where you DON'T want to get bit) in the event of a fall.

New buckle design allows for quick and positive hook-ups.





# 2007 ACCESSORIES

Please ask your dealer or see our website for a more complete listing of accessories.

**85000 ■ Back Bar Knobs** ■ 5/16 thread diameter. Fits most stands prior to 1996. Check thread size before ordering. Sold in pairs

**85001 ■ Back Bar Knobs** ■ 1/4 thread diameter. Fits Bullet and Broadhead Backpacker Treestands. Fits some older stands. Check thread size before ordering. Sold in pairs.

**85002 ■ High Traction Strips** ■ Set of 5 adhesive backed, non-skid strips. Easy to apply and fits all models.

**85005 ■ Adjustable Backpack Straps** ■ A set of camo backpack straps for use with any Summit Stand. Quick adjust buckle. Fits many other Commercially available stands.

**85007 ■ Gun Rest** ■ Pivoting gunrest for use on Summit Stands with permanent Front Bar. Also works on many commercially available stands. Complete assembly.

**85009 ■ Replacement Cables for Climbing Treestands** ■ Instead of trying to repair nicks or cuts, purchase a brand new pair of cables for your climbing treestand. Sold in pairs. Fits all Summit cable stands.

**85010 ■ Replacement Shrink Tube for Cables** ■ Two full-length shrink tubing pieces to replace old, worn out tubing. Heat with a heat gun to apply. Sold in pairs.

**85020 ■ Air Seat for Climbing Treestands** ■ Fits all model climbing stands. Full backrest. Original equipment on 2000 model stands. Includes 3 bar slides for assembly.

**85023 ■ Footrest Kit for Aluminum (non-folding) Treestands** ■ Platform channels must be closed shape that run side to side, not front to back. Eliminates pressure on the back of your legs. Also fits 2004 and newer Backpacker Model stands. Easy to install.

**85024 ■ Utility Strap with Tourniquet Buckle** ■ Our multi-purpose utility strap will come in handy in many situations. This is the same strap that is included with all our treestands. Sold in Pairs.

**85026 ■ Footstrap Kit for Aluminum Stands** ■ Fits aluminum models only. Does not fit 2004 or newer platforms.

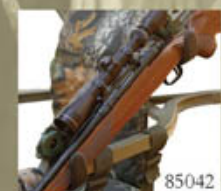
**85030 ■ 30' Bow Rope** ■ Works great for hoisting your gun or bow. Easy to attach, tangle free design.

**85037 ■ Foam Seat for Trophy Chair** ■ Replacement foam seat for Trophy Chair ONLY. Full backrest.

**85042 ■ Gun Holder** ■ Our gun holder is designed to hold many different models of rifles, shotguns and muzzle loaders. Two pieces attach to your treestand arms to securely hold your firearm.

**85044 ■ 2003 Headhunter Strap** ■ Summit Headhunter Series Hang On Treestand replacement attaching strap. For 2003 models ONLY.

**85048 ■ Buckstep Replacement Straps** ■ Set of replacement straps for the Buckstep tree steps. Adjustable with spring loaded buckle. Sold in sets of 4.



85042



85044



85000



85002



85005



85007



85009



85010



85020



85023



85024



85026



85030



85037

**85049 ■ Footrest Kit for 2003 Folding Stands** ■ Fits 2003 Bullet and Broadhead platforms only.

**85051 ■ In-Line Cable Ties** ■ Great for adding camouflage to your treestand, ground blind, duck blind, etc. The in-line design eliminates scrapes from trimmed off ends. Set of 8.

**85052 ■ RapidClimb Stirrups** ■ Eliminate your toe straps. Just rest your heel on the bungee, stretch it back, and insert your foot in the stirrup! RapidClimb stirrups make GREAT upgrades to existing Summit climbers! They will fit any of our aluminum stands with 1" square tubing. They also fit many commercially available stands.

**85053 ■ 2004-2007 Hang on strap** ■ Replacement Copperhead/HH X4, X5 Hang-On Strap. Fits ONLY 2004-2005 and 2007 Copperhead Compact.

**85055 ■ Front Storage Bag** ■ Zippered storage bag for your hunting stands. Our front storage bag will fit any Summit that has a front bar and they also fit many other brands of treestand!

**85056 ■ Side Storage Bags** ■ Two zippered storage bags for your hunting stands. Bags are tapered to fit neatly under the arm rests on all Summit stands. They also fit many other brands of treestands on the market.

**85057 ■ Deluxe Backpack Straps** ■ Upgrade to these thick padded straps. Adjustable and easy to install. Fits many other commercial available stands.

**85061 ■ ClearShot / Copperhead Foam Seat** ■ Fits 2004 or newer ClearShot and Copperhead treestands.

**85063 ■ Reversible Blind** ■ Perfect for those cold winter hunts. Elastic conforms to your body and gives plenty of freedom for shots all around the tree. Next Camouflage G1 on one side and Next Camouflage G1snow on the other.

**85064 ■ Arm Pad Kit** ■ Pair of 12" camo arm pads with cable ties. Next Camouflage G1.

**85069 ■ 72" Pad Kit** ■ Single 72" pad with cable ties for Goliath and Summit 180. Next Camouflage G1.

**85070 ■ OpenShot Foam Seat** ■ Fits 2004 and newer OpenShot treestands.

**85071 ■ Summit 180 / Single Barrel / X-Pod Foam Seat** ■ Hard, single piece backrest. Quick-change buckles. Next Camouflage G1.

**85072 ■ 36" Pad Kit** ■ Single 36" and two 12" pads with cable ties for Viper. Also fits many commercially available stands.

**85073 ■ 18" Pad Kit** ■ Single 18" and two 12" pads with cable ties for Bullet, Python and Razor. Also fits many commercially available stands. Next Camouflage G1.

**85074 ■ Ladder Strap Kit** ■ Replacement ratcheting straps for Summit ladder stands. Includes two extra long straps and two ratchets.

**85075 ■ Climbing Treestand Foam Seat** ■ Fits most model Summit Climbing stands including Viper, Goliath, Razor, Bullet, Python and Cobra. Full backrest and new quick release buckles.

**85076 ■ Deer Deck / Deer Deck Lite Foam Seat** ■ Fits Deer Deck and Deer Deck Lite only.

**85077 ■ Comfort System Foam Seat and Support Bar** ■ Fits Comfort System and Basic System. Includes attachment straps.

**85078 ■ Predator Pod Foam Seat** ■ Fits Predator Pod only.



85049



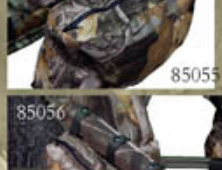
85051



85052



85053



85056



85057



85061



85063



85064



85069



85070



85071



85072





85082 - Buckstep Carrying Bag • Carry your Bucksteps in this storage bag. Includes large camo bag with zipper, drawstring and shoulder strap.



85092 - Deer Deck / Deer Deck Lite Strap • Replacement heavy duty ratchet strap.



85091 - Universal Bow Holder • Our new all metal, universal bow holder is the perfect stand addition for bowhunters. It clamps on in seconds and fits most Summit models plus many commercially available stands.



85118 - Our new Comfort Mat is made with comfortable high density foam that won't hold water. Reduces the stress on your feet. Next G1 Camouflage.



85114 - Our new treestand carry bag is big enough for a stand and other gear. It's also water resistant so you'll have a dryer seat when you get where your going. Next G1 camouflage.



85115 - Our new fully adjustable gun rest fits most of our aluminum climbing treestands. It includes a padded front bar with Next G1 camouflage.



85116- Our new drop blind is easy to deploy and then rolls up to stow around the top bar of many of our closed front stands. Next G1 Camouflage.



85117 - Our new Surround Seat offers a full coverage enclosed seat and convenient pockets within easy reach. Next G1 Camouflage.



Summit treestands and accessories are available for purchase at select retailers and dealers. A list of these retailers and dealers is available by zip code on our website. Accessories, replacement parts and specialty items are also available for purchase at our website or by phone.

Summit products are manufactured under one or more of the following US patents: 4,991,690 ; 5,226,505 ; 5,413,192 ; 5,937,969 ; 5,971,104 ; 5,975,242 ; 6,182,792 ; 5,979,603 ; 6,397,973 and Des. 417,011 ; 420,147. Summit MegaSampson, Bucksteps, Seat-O-The-Pants Safety Line and Rapid Climb Stirrups are patent pending.

Catalog images reflect the various models and accessories as configured at the time of printing and are subject to change without notice at any time.

Weights are approximate and do not include standard accessories.

Photography: Charles Seifried

WWW.SUMMITSTANDS.COM  
256-353-0634







83041

**Seat-O-The-Pants Safety Harness** n Undisputed top dog of the harness world. The Seat-O-The-Pants safety harness is a true 4-point full body harness. Adjustable leg and shoulder straps allow you to customize your hunting harness to early season or late season clothes. Completely adjustable safety line with prussic knot cinches tight when pressure is applied. Comes with attached storage pouch.

- 83036 - Small - Fits Waist Size 25-28
- 83037 - Medium - Fits Waist Size 28-35
- 83038 - Large - Fits Waist Size 35-46

**Seat-O-The-Pants Safety Harness** - Same as above but in Camouflage.

- 83039 - Small - Fits Waist Size 25-28
- 83040 - Medium - Fits Waist Size 28-35
- 83041 - Large - Fits Waist Size 35-46

**Seat-O-The-Pants FastBack™ Safety Harness** n The SOP FastBack harness is the one you've been waiting on. COMPLETELY tangle-free design means you can throw it in your duffle bag, truck seat, tool box, etc. and ALWAYS count on easily putting it on - Simply pick the harness up by the tether strap to keep it tangle free! Mesh back does everything a vest does, without the extra hassle.

- 83042 - Small - Fits Waist Size 25-28
- 83043 - Medium - Fits Waist Size 28-35
- 83044 - Large - Fits Waist Size 35-46

**Seat-O-The-Pants FastBack™ Cub Safety Harness** n The Cub is a Youth FastBack harness that fits waist sizes from 18 - 24 Inches. It also includes a Seat-O-The-Pants Climbing System, PN 83014. All of the features of the standard FastBack™ in a smaller package!

- 83046 - Youth - Fits Waist Size 18-24

**Seat-O-The-Pants Supreme X7 Safety Harness** n The SOP Supreme X7 is designed for hunters who just don't like the thought of ANY straps to deal with on a full-body harness. It has the features of the regular SOP harness all packed into a design that is light weight, tangle-free, and comfortable to wear. Camouflage. Does not include attached storage pouch.

- 83047 - Medium - Fits Waist Size 28-35
- 83048 - Large - Fits Waist Size 35-46



83046



83044

83048

83011 n SOP Locking Clip n Large locking clip to use as a spare or replacement. Threaded connection assures a secure hook-up to your harness.

83014 n SOP Climbing System n Getting into and out of your hang-on treestands has never been easier or safer. The Summit Climbing System allows you to be connected to the tree the entire time you're climbing. Just slide the prusic knot up the tree climbing rope to stay connected to the tree. Includes one 30' safety rope, prusic knot and storage pouch.



83014

83015



83024

83049



83011



83045

83015 n SOP Safety Rope with Hardware n Carry an extra tree climbing safety rope with you to be sure you always have one when using hunting treestands. Rope converts into lineman's belt. Includes prusic knot, safety rope, lineman's and locking clip.

83018 n SOP Tree Descender n In the unlikely event of a fall, the Tree Descender will make the task of getting safely to the ground easier.

83023 n SOP Safety Rope no Hardware n Same as above but no lineman's or locking clip.

83049 n SOP Climbing System Combo Pack n Same as above but with three 30' ropes each with prusic knot and no storage pouch.

83045 n SOP Camo Pouch n This pouch will attach to your treestand safety harness and can be used to store an extra tree climbing rope or climbing hardware.

83049 n SOP Suspension Relief System n Includes carrying pouch that can attach to your harness webbing.

**SUMMIT TREESTANDS, LLC**  
715 SUMMIT DR  
DECATUR, AL 35601  
256-353-0634

PRSR STD  
U.S. POSTAGE PAID  
DECATUR, AL 35601  
PERMIT NO. 838



WWW.SUMMITSTANDS.COM

