



Instruction Booklet

2006

Summit ATV Modular Trailer Chassis	84016
Summit ATV Trailer Bed	84017
Summit ATV 40 Gallon Sprayer with Trailer	84018
Summit ATV 400 lb Spreader with Trailer	84019
Summit ATV 400 lb Spreader Stand Alone	84015

WARNING READ ME FIRST!!!

Please read carefully **BEFORE** using your new Summit ATV Product.

Congratulations! You have purchased the finest commercially available ATV implement on the market today. Summit ATV Products are designed and built to provide years of trouble-free, successful use. This booklet is provided to you to outline the recommended use, care and maintenance of your Summit ATV Product.

Warnings and Precautions

- **FAILURE TO READ, UNDERSTAND AND FOLLOW THESE INSTRUCTIONS MAY LEAD TO SERIOUS INJURY OR DEATH!**
- **READ, UNDERSTAND AND OBEY YOUR ATV'S INSTRUCTION / SAFETY MANUAL BEFORE USING THIS PRODUCT! ALWAYS WEAR A HELMET!**
- **DO NOT EXCEED A SAFE SPEED FOR THE TERRAIN AND SOIL CONDITIONS ENCOUNTERED! NEVER USE ON STEEP SLOPES! NEVER EXCEED YOUR RIDING CAPABILITIES!**
- **DO NOT EXCEED YOUR ATV'S MAXIMUM RATED TOWING CAPACITY!**
- **WEIGHT LIMIT 500 LBS.**
- **DO NOT OPERATE IF YOU HAVE BEEN USING DRUGS OR ALCOHOL!**
- **SUMMIT'S LINE OF ATV TRAILERS ARE DESIGNED FOR USE WITH AN ATV OR GARDEN TRACTOR ONLY. DO NOT USE WITH A CAR, TRUCK OR ANY OTHER VEHICLE!**
- **SUMMIT'S LINE OF ATV IMPLEMENTS ARE NOT DESIGNED FOR HIGH SPEED TRANSPORT ON PUBLIC ROADS!**
- **YOU MUST USE A 2" BALL TO CONNECT THIS TRAILER TO YOUR ATV!**
- **DO NOT USE THIS TRAILER FOR HUMAN TRANSPORTATION!**
- **CHECK AND RETIGHTEN ALL BOLTS PRIOR TO EACH USE!**
- **THOROUGHLY RINSE AFTER USE WITH FERTILIZERS OR OTHER CHEMICALS!**
- **LUBRICATE ALL GREASE FITTINGS BEFORE FIRST USE!**
- **LUBRICATE ALL MOVING PARTS AFTER EVERY USE!**
- **ALWAYS FOLLOW SEED / FERTILIZER MANUFACTURER'S GUIDELINES FOR USE!**
- **WEAR SAFETY GLASSES AT ALL TIMES WHEN USING THE SPREADER OR SPRAYER!**
- **WARNING! THIS TRAILER TRACKS WIDER THAN YOUR ATV - TAKE CARE WHEN MANEUVERING AROUND TREES OR DOWN TRAILS!**

Section 1. Trailer Adjustments.

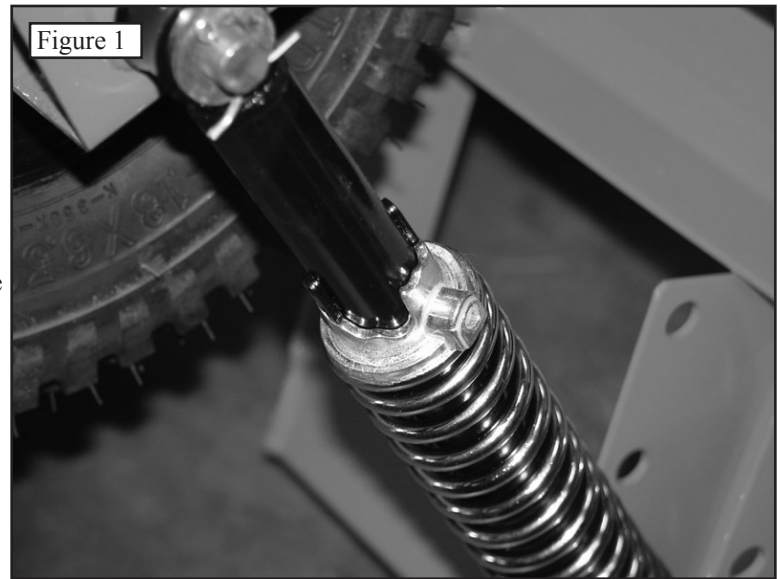
WARNING: ALL SUSPENSION ADJUSTMENTS SHOULD BE MADE TO BOTH SIDES EQUALLY!

The suspension on this trailer system is adjustable for varying loads and terrain.

The shocks on this trailer are adjustable. Each shock has a collar in the middle of the shock just below the spring. Turning the collar counter-clockwise increases the stiffness of the spring as shown in **Figure 1**.

It is recommended that the shocks be stiffened for frequent heavy load use. Lighter loads require less stiffness.

There are three different shock mounting points allowing for three different placements. The closer the shock comes to perpendicular with respect to the frame, the stiffer it becomes (See **Figure 2**). Always adjust both sides equally.



Section 2. Add On Trailer Attachments.

This trailer system has the ability to accept other Summit ATV add ons. The trailer has four tie down points as shown in **Figure 3**.

Part 1. Attaching the Bed (PN 84017)

Step 1. Lay the bed on the trailer frame between the welded on brackets as shown in **Figure 4**.

Step 2. Using the supplied U-Bolts, attach the bed to the frame as shown in **Figure 5**. Run one side of the bolt through the pre-drilled hole in the frame and around the bed frame (See **Figure 6**).



Part 2. Attaching the 40 Gallon Sprayer (PN 84018)

Step 1. Set the 40 Gallon Sprayer frame on the trailer chassis between the welded on brackets.

Step 2. Connect the supplied ratchet strap to one of the tie off points as shown in **Figure 7**.

Step 3. Run the strap up and over the tank and attach to the other side as shown in **Figure 8**.

Step 4. Ratchet and repeat for other side.

Part 3. Attaching the 400lb Spreader (PN 84019)

Step 1. Set the spreader frame on the trailer chassis and slide it to the rear so that the welded on brackets fit over the trailer chassis. (See **Figure 9**).

Step 2. Mount the U-Bolt over both the spreader frame and the trailer chassis. Bolt together using the backing plate as shown in **Figure 10**.

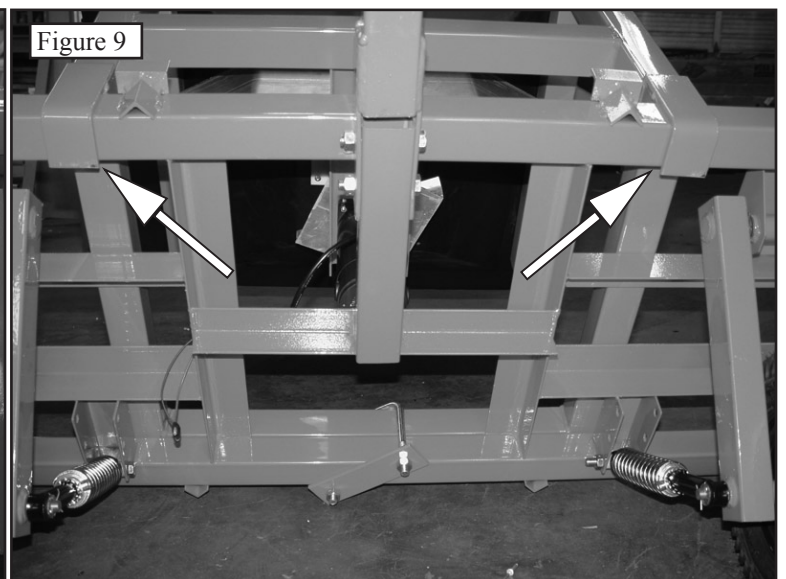
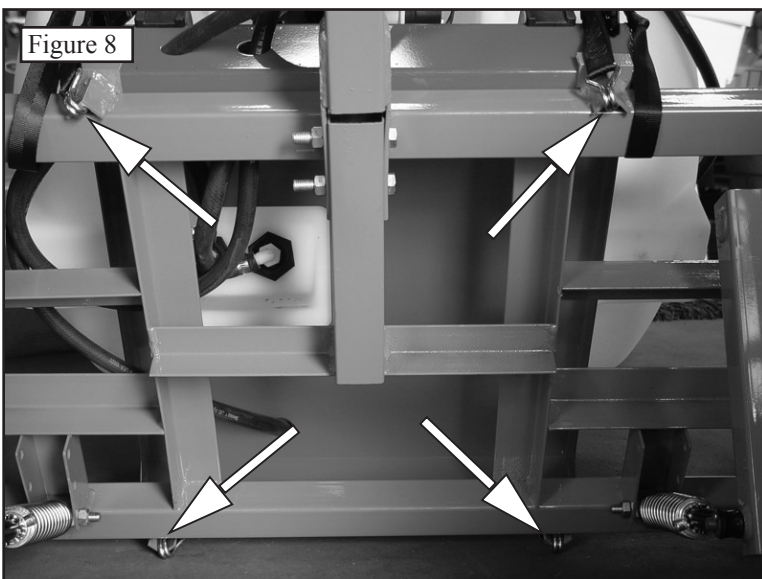
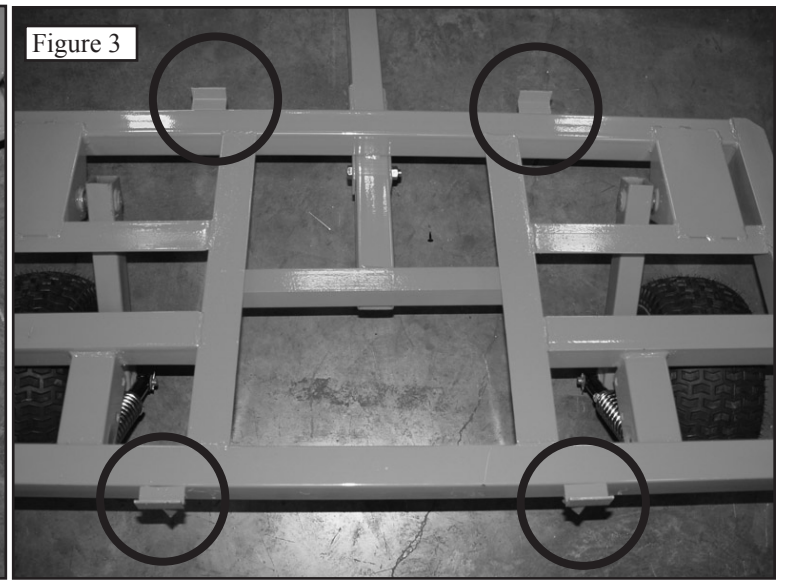
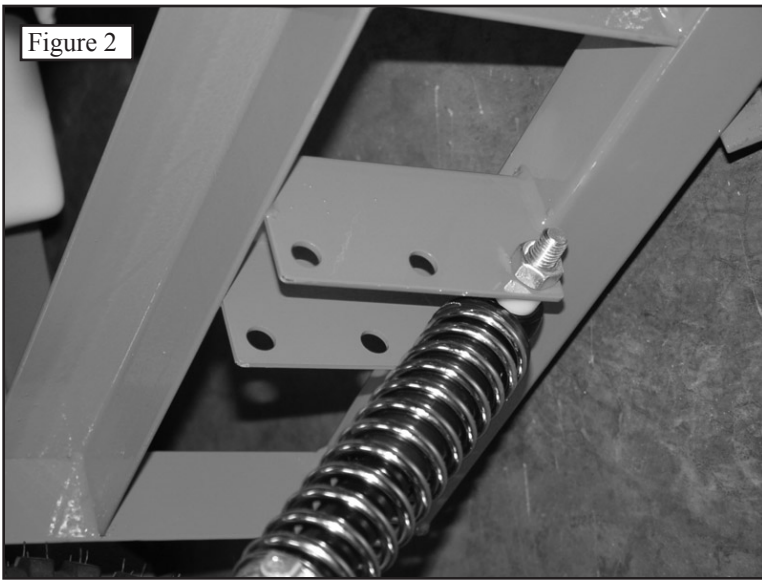


Section 3. Using the Trailer Bed (PN 84017)

The tailgate is hinged and it is held in place with two 5/16" detent pins. To open the tailgate, simply pull the detent pins out and swing the gate down (See **Figure 11**).

Section 4. Using the 40 Gallon Sprayer (PN 84014 or 84018)

Please refer to the enclosed Fimco Instructions for sprayer use and parts lists.

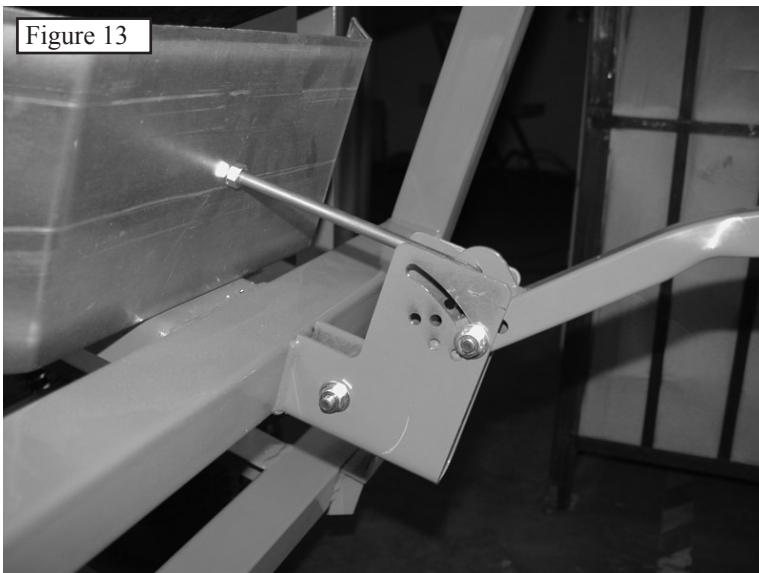
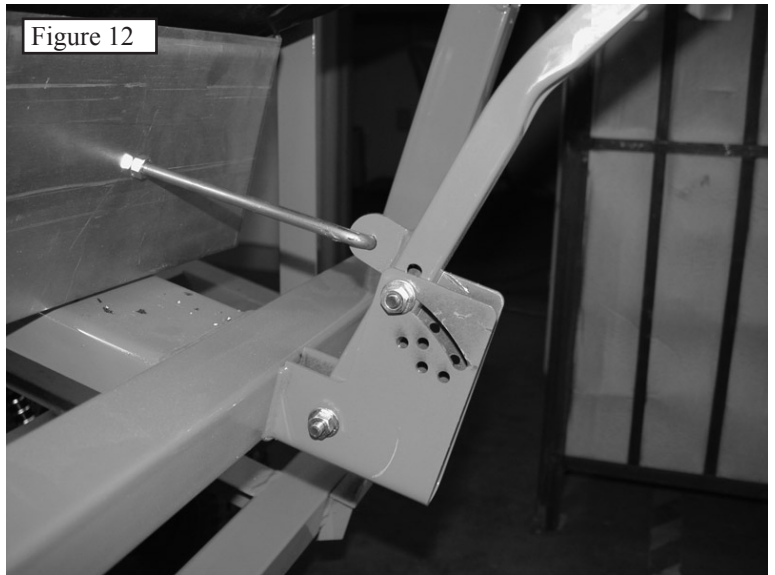
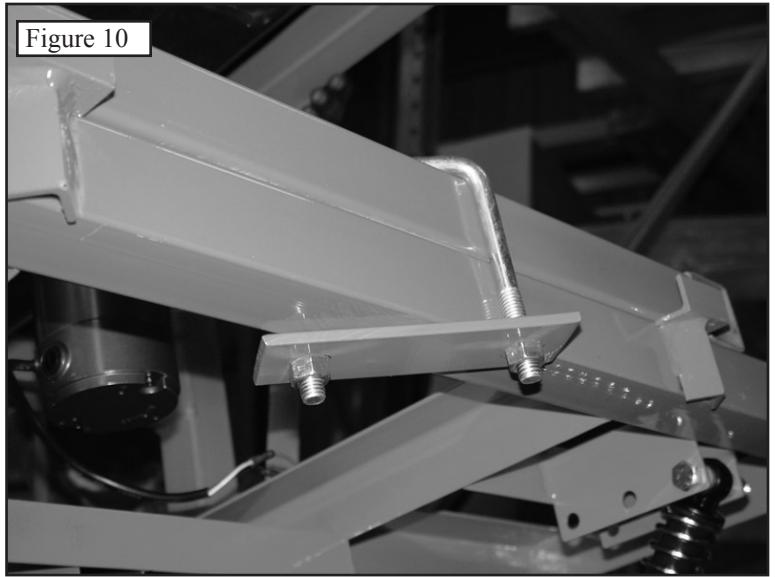


Section 5. Using the 400 lb Spreader (PN 84015 or 84019)

Step 1. Connect the Spreader wiring harness to your ATV's power supply. **WARNING: RUN ALL WIRING HARNESSSES AWAY FROM MOVING PARTS!**

Step 2. Seed Flow is controlled by the central lever. All the way back against the spreader is off (See Figure 12). All the way forward is maximum flow (See Figure 13).

Step 3. Turn on spreader motor before opening the Seed Flow gate.



Replacement Parts List

PN	Description
15403	Wheel with tire
15505	1" E-Style Snap Clip
15504	3/4" ID Washer
15503	3/4" E-Style Snap Clip
15506	12 mm ID Washer
15507	Cotter Pin
15508	12 mm x 75 mm Bolt (8.8 on head)
15510	12 mm lock nut (hex stamp on side)
15509	Nylon Shock Spacer
15453	Shock

©(STLLC 2006)

Limited Warranty

(A) Warranty

Summit Treestands, LLC (Summit) warrants to the original retail purchaser that all products manufactured by it are free from defects in material and manufacture at the time of shipment for twelve (12) months from the date of purchase. Summit will repair or replace any part found defective if the unit claimed to be defective shall be returned to Summit, postage prepaid, within the warranty period.

This warranty shall not apply to any product which has been subjected to misuse; misapplication; neglect (including but not limited to improper maintenance); accident; improper installation; modification (including but not limited to use of unauthorized parts or attachments); adjustment or repair. THE FOREGOING IS IN LIEU OF ALL OTHER WARRANTIES, WHETHER EXPRESS OR IMPLIED (INCLUDING THOSE OF MERCHANTABILITY AND FITNESS OF ANY PRODUCT FOR A PARTICULAR PURPOSE), AND OF ANY OTHER OBLIGATION OF LIABILITY ON THE PART OF THE COMPANY.

(B) Limitation of Liability

It is expressly understood that Summit's liability for its products, whether due to breach of warranty, negligence, strict liability, or otherwise, is limited to the repair of the product, as stated above, and Summit will not be liable for any other injury, loss, damage, or expense, whether direct or consequential, including but not limited to loss of use, income, profit, or damage to material, arising in connection with the sale, installation, use of, inability to use, or the repair or replacement of Summit's products.

Summit reserves the right to make alterations or modifications in its products at any time, which in its opinion, may improve the performance and efficiency of the product. It shall not be obligated to make such alterations or modifications to products already in service.

Please fill out the warranty card on the back of these instructions and return to: You can also register your warranty card on line at:

SUMMIT Treestands, LLC.
715 Summit Dr.
Decatur, AL 35601

r.www.summitstands.com/warranty.aspx

Cut Along Line

Cut Along Line

Warranty Card for Summit ATV Trailer PN 84016

Owners Name: _____ Street Address: _____

City: _____ State: _____ ZIP: _____ Phone: (____) _____

Date Purchased: _____ Purchased From (Dealer Name): _____ Price \$: _____

Your heard about us through: Magazine Advertisement Video Friend Summit Catalog

Other Please Explain: _____

