



**H. Wilson Company**  
PO Box 290  
Waukegan, IL 60079  
Phone: 800-245-7224  
Fax: 800-245-8224  
www.hwilson.com  
sales@hwilson.com

**WALCDM  
Universal Adjustable  
Height LCD  
Projector Mount**



**Parts for WALCDM**

- (1) 1 1/4" - 25" long inner adjustable pipe
- (1) 1 1/2" - 23 1/2" long outer adjustable pipe, attached to mounting bracket
- (1) ceiling mounting bracket
- (4) arms
- (1) mounting assembly
- (5) M6 hexhead screws
- (8) 6mm washers
- (1) M10 screw
- (2) 10mm washers
- (4) plastic spacers
- (4) 6mm nuts
- (4) 6mm shoulder screws
- (1) 10mm nut
- (4) 3" screws & (4) washers

**Instructions:**

1. Secure ceiling bracket to ceiling using (4) 3" screws and washers. Place washer on the outside of hole of mounting bracket, then screw in the 3" screws. Diagram A.

**NOTE: Do NOT attach to a drop ceiling.**

2. Secure 1 1/2" - 15" long inner adjustable pipe to ceiling mount by screwing it in. Diagram A.

3. Attach (4) arms to mounting assembly using 6mm shoulder screws. Do not tighten. Determine correct position of arms for projector location and then tighten the (4) nuts. See Diagram B

4. Now take this and secure to the 1 1/2" - 23 1/2" long outer adjustable pipe/bracket assembly using M6 hexhead screws .

5. Connect projector to arms and bracket assembly using screws that are recommended by your installer. Align arm and bracket assembly over the female fittings on your projector. Place nut over female fitting on top of arm. Thread screw through the nut and into the female fitting on the projector. When screw is in place securely, tighten nut. Do not over tighten. OPTIONAL: We have provided (4) spacers to prevent marring of LCD surface; to create ventilation where necessary, and to allow level attachment of projector if necessary. See Diagram C.

6. Take projector and bracket & arm assembly which is attached to the outer 23 1/2" long pipe and slide outer pipe over mounted inner pipe assembly and secure to your desired length. Insert the bolt and washer on the outside of the bracket and tighten into the welded nut on the inside of the bracket. Diagram D.

7. Adjust to your desired length.

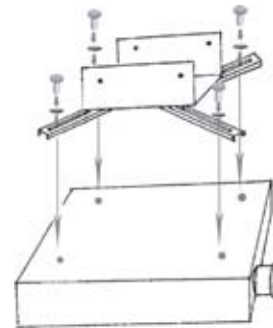
OPTIONAL: For tilting position loosen the (2) bolts in Slot A (See Diagram B) located on side of mounting bracket. Adjust for preferred tilt. Level or up to 10 degree tilt. Tighten bolts when tilt is correct.

8. To secure on the ceiling mounting bracket, use by using (1) M6 hexhead screw.

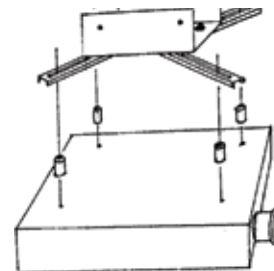
**Diagram A**



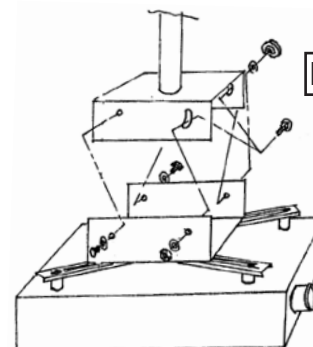
**Diagram B**



**Diagram C**



**Diagram D**



**THIS H. WILSON PRODUCT SHOULD BE INSTALLED BY A PROFESSIONAL INSTALLER .**