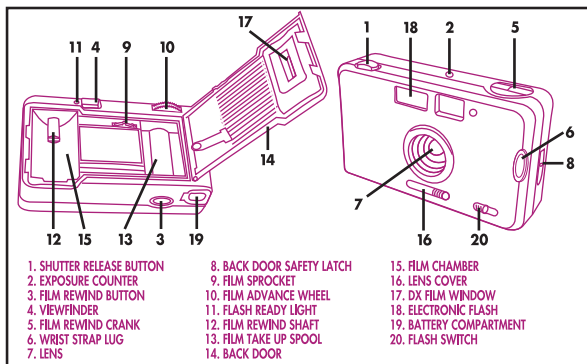


# Disney PRINCESS

## 35mm FLASH CAMERA INSTRUCTIONS

**IMPORTANT:** This product will not work properly or provide the results you expect unless you take a few moments to read and understand our operating instructions.



- |                           |                           |                         |
|---------------------------|---------------------------|-------------------------|
| 1. SHUTTER RELEASE BUTTON | 8. BACK DOOR SAFETY LATCH | 15. FILM CHAMBER        |
| 2. EXPOSURE COUNTER       | 9. FILM SPROCKET          | 16. LENS COVER          |
| 3. FILM REWIND BUTTON     | 10. FILM ADVANCE WHEEL    | 17. DX FILM WINDOW      |
| 4. VIEWFINDER             | 11. FLASH READY LIGHT     | 18. ELECTRONIC FLASH    |
| 5. FILM REWIND CRANK      | 12. FILM REWIND SHAFT     | 19. BATTERY COMPARTMENT |
| 6. WRIST STRAP LUG        | 13. FILM TAKE UP SPOOL    | 20. FLASH SWITCH        |
| 7. LENS                   | 14. BACK DOOR             |                         |

### CAMERA CARE AND SERVICE:

- Store your film and camera away from heat or direct sunlight. Never store in a car. Never wipe or rub a dry lens, always clean with lens cleaning fluid.
- Always use fresh film and have your film processed as soon as possible after you have removed it from the camera.

### GUARANTEE:

1 year limited guarantee. We will replace or repair free any defective parts. For guarantee service, send product to: Global Point Products, 5815 County Road 41, Farmington, NY 14425 U.S.A. Enclose a check or money order for \$5.00 to cover handling charges and postage. Pack the product well and insure it.

### IMPORTANT:

If you have a problem, **DO NOT RETURN THE CAMERA TO THE RETAILER.** Contact our Customer Service Department for immediate assistance at (800) 367-0732 Extension #47. Monday through Friday 10:00 AM - 4:00 PM EST.

Global Point Products  
5815 County Road 41  
Farmington, NY 14425  
U.S.A.

©Disney

Keep for future reference

(0207)



**WARNING:**  
CHOKING HAZARD—Small parts.  
Not for children under 3 years.

### HOW TO START

**STEP 1** Safety latches are used to prevent accidental opening. To load battery you must first open up the Battery Compartment (19) and put in 1 new (AA) alkaline battery.

**STEP 2** To load the film you must first open the Back Door (14). Place a roll of 35mm film in the Film Chamber (15) with the film lying across the Film Sprocket (9), and engaging the Film Take Up Spool (13).

**STEP 3** Turn the Film Advance Wheel (10) until it stops. The film must be wrapped around the Film Take Up Spool (13) and also engaging the Film Sprocket (9).

**STEP 4** Close the Back Door (14), advance the film until it stops. Move the Lens Cover Switch (16) to the (☐) "OPEN" position. Depress the Shutter Button (1), repeat film advance and depressing shutter button until the Exposure Counter (2) reads #1. The Film Rewind Crank (5) should turn during this process to indicate the film is loaded properly. You are now ready to use the camera.

### HOW TO TAKE GREAT PICTURES

**STEP 1** Outside on bright sunny days, simply look through the Viewfinder (4) and compose the picture you desire. Try to have your main subject well lit with the sun overhead or behind you, not behind the subject. For best results keep your main subject at least 4' away. The DX Film Window shows the type of film loaded.

**STEP 2** On cloudy days, nights, or indoors, you will need to use the flash. Slide the flash switch (20) to the (☑) "ON" position and wait for the Ready Light (11) to come on. When the Ready Light (11) is on you may take a picture. **IMPORTANT: Make sure that your subject is between 4'-10' away.\***

**STEP 3** Hold the camera steady, press the Shutter Release Button (1), you are done! Turn the Film Advance Wheel (10) until it stops. You are now ready for the next shot.

### WHEN DONE

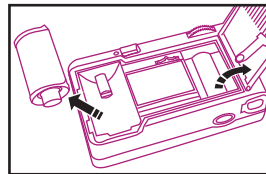
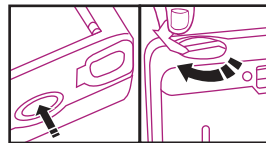
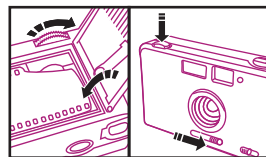
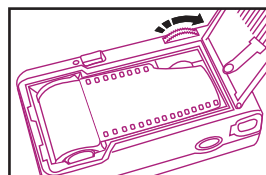
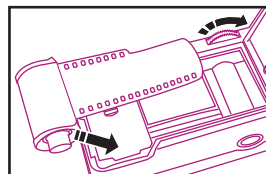
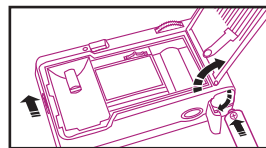
**STEP 1** When the Film Advance Wheel (10) no longer turns, this indicates that you are at the end of the roll.

**CAUTION: Do not force advance wheel.** You must rewind the film before opening the Back Door (14) and removing. Depress the Film Rewind Button (3) and unfold the Film Rewind Crank (5). Turn the Film Rewind Crank (5) clockwise repeatedly until the film is rewound back into the cartridge, you will feel the crank tension decrease when you have finished rewinding properly. Return Film Rewind Crank (5) to its original position.

**CAUTION: Film must be rewound completely before opening the back door.**

**STEP 2** Open the back door and take your exposed film to a processor as quickly as possible.

**STEP 3** Reload the camera with fresh film. This should not be done in direct sun light.



1.5V AA

USE ONLY A STANDARD (AA) ALKALINE BATTERY.