

DEDELI[®] NEBEL



2 0 1 3

America's Favorite Fishing Lures™

The Frog Prince

Rebel® Frog-R™

The Rebel Frog-R combines one of a bass favorite foods with one of bass fishing's most effective techniques, the frog and the walk-the-dog retrieve. Walk the dog with a super-realistic Frog-R!



T30

Model	Size(In)	Size(cm)	Weight(oz)	Weight(g)	Hook Size
T30	2 3/8	6.03	5/16	8.86	#6



510 Swamp Frog



511 Leopard Frog



512 Cricket Frog



513 Bull Frog

Lookin' for a Buzz?



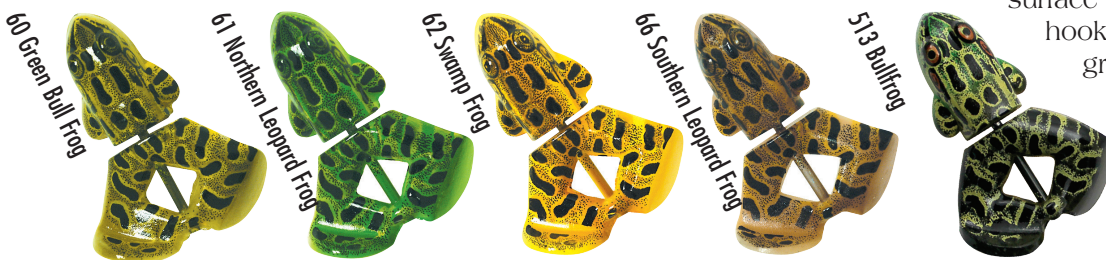
T4

Model	Name	Size(In)	Size(cm)	Weight(oz)	Weight(g)	Hook Size	Cranking Depth(ft)
T4	Buzz'n Frog®	2 1/2	6.35	1/2	14.0	1/0	topwater

Model	Colors Available
T4	60, 61, 62, 66, 513

Buzz'n Frog®

The Buzz'n Frog® is a buzz bait in disguise, the only difference being that when you stop the retrieve, this lure floats head up just like a frog. The free spinning rear legs churn the water's surface and the semi-weedless rear hooks easily slip through heavy grass, weeds and moss.



NEW COLOR!



Crank 'em Up



DC93

Crappie Crank-R™

Catch the biggest slab out of every school. The Rebel Crappie Crank-R was designed with input from professional crappie guide and tournament angler Todd Huckabee to appeal to big fish. Trolls at 8- to 10-feet.

Model	Name	Size (In)	Size (cm)	Weight (oz)	Weight (g)	Hook Size	Cranking Depth (ft)
DC93	Crank-R®	2	5.08	3/8	10.5	#6	8-10

Depths are approximate and obtained using 12lb test Silver Thread® line



Rebel® Value series

Rebel® Minnow

Perfect for small waters, streams, ponds and shallow water in general, the Rebel F20, F10, F49 and F50 catch fish of all kinds. The smallest of the Minnows, the F49, measures less than 2 inches and dives to about 2 feet. The F50 is 2 1/2-inches and the F20 is the biggest Minnow at 4 1/2 inches.

Model	Size(In)	Size(cm)	Weight(oz)	Weight(g)	Hook Size	Cranking Depth(ft)
F49	1 5/8	4.13	5/64	2.2	#12	0-2*****
F50	2 1/2	6.35	1/8	3.6	#10	0-2****
F10	3 1/2	8.95	5/16	7.6	#6	0-3***
F20	4 1/2	11.55	3/8	10.1	#4	0-3***

*using 14lb test line, **using 10lb test line, ***using 8lb test line, ****using 6lb test line, *****using 4lb test line. Silver Thread® line used for all results.



Super Teeny Wee-R®

The F91 crankbait has the soul of a Wee-R in a tiny body. Seductive shimmy that comes in four color patterns: Brown Crawdad, Fire Tiger, Tennessee Shad and Bass.

Model	Size(In)	Size(cm)	Weight(oz)	Weight(g)	Hook Size	Cranking Depth(ft)
F91	1 1/2	3.81	1/8	3.63	#10	1-3



35V
Brown Crawdad



48V
Tennessee Shad



56V
Fire Tiger



478V
Bass

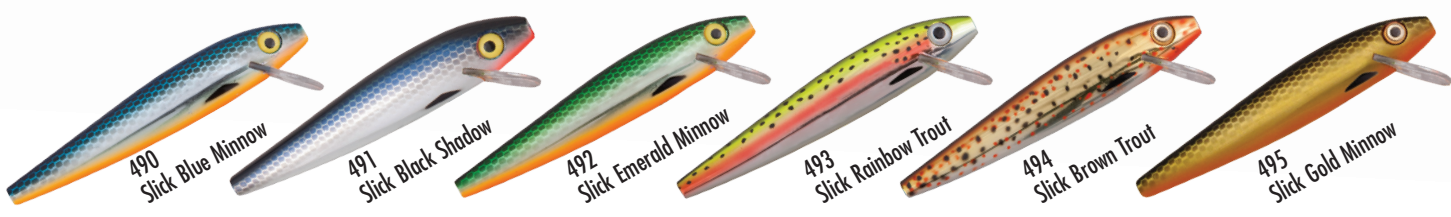
Getting DOWN To New Levels.

Tracdown™ Minnow

The classic Rebel F49, F50, and F10 now come in sinking Tracdown versions, which expands the versatility of these incredible fish-catchers. Now bass, trout, walleye and other predator fish don't stand a chance no matter how deep they are holding. Awesome color patterns, 3-D eyes and black nickel hooks at a great price! Perfect for fishing in current.

Model	Size(In)	Size(cm)	Weight(oz)	Weight(g)	Hook Size	Cranking Depth(ft)
TD49	1 5/8	4.13	3/32	2.4	#14	0-2*****
TD50	2 1/2	6.35	5/32	4.3	#10	0-2****
TD10	3 1/2	8.95	3/8	10.4	#6	0-3***

using 8lb test line, *using 6lb test line, *****using 4lb test line. Silver Thread® line used for all results.



REBEL

Half Grasshopper, Half Cricket.



Model	Name	Size (In)	Size (cm)	Weight (oz)	Weight (g)	Hook Size	Cranking Depth (ft)
F73M	Bighopper	1 3/4	4.95	1/4	3.79	#10	0-3
F73	Crickhopper™	1 1/2	3.81	3/32	2.8	#14	0-3

*depths are approximate and obtained using 12lb test Silver Thread® line

Model	Colors Available
F73M	56, 94, 95, 96, 97
F73	56, 94, 95, 96, 97, 314

Crickhopper™

Catching fish for almost 20 years — the Crickhopper™ resembles crickets and grasshoppers during different stages of the year and can be used as a topwater lure or as a crankbait.

The configuration of the Rebel Crickhopper is the exclusive property of EBSCO Industries and is protected by U.S. Trademark Registration Number 2,596,422.



You've seen them spit, but have
**You heard
 Grasshoppers
 Pop?**

Model	Name	Size (In)	Size (cm)	Weight (oz)	Weight (g)	Hook Size	Cranking Depth (ft)
P73	Crickhopper Popper™	1 3/4	4.5	3/16	4.2	#10	Topwater

Model	Colors Available
P73	432, 434

Crickhopper Popper™

You've fished with real grasshoppers, now fish with this: the Rebel® Crickhopper Popper™. It's the first "popping" critter of its kind. This realistic ultralight will cause such a commotion that you'll catch fish all day long. Twitch it to make it "pop" across the water.

Available in
Two Colors!



**432
Fire Tiger**

**434
Yellow/Black Back**



The Original Crawfish.

Model	Name	Size (In)	Size (cm)	Weight (oz)	Weight (g)	Hook Size	Cranking Depth (ft)
D74	Big Craw	2 5/8	6.65	7/16	11.6	#4	8-10*
D76	Deep Wee	2 3/8	5.84	3/8	9.5	#6	8-10*
F76	Wee-Crawfish™	2	5.08	1/5	6.0	#8	5-7**
D77	Deep Teeny Wee	1 1/2	3.81	1/9	3.0	#14	4-5**
F77	Teeny Wee-Crawfish™	1 1/2	3.81	1/10	2.8	#14	2-3**

*using 10-12lb test line, **using 10lb test line, ***using 6lb test line Depths approximate, results achieved using Silver Thread® fishing line.

Model	Name	Colors Available
D74	Big Craw	34, 35, 60, 65, 75
D76	Deep Wee	34, 35, 40, 60, 63, 65, 67, 75, 84
F76	Wee-Crawfish™	34, 35, 40, 60, 65, 67, 75, 84
D77	Deep Teeny Wee	34, 35, 40, 60, 65, 67, 75, 84
F77	Teeny Wee-Crawfish™	01, 34, 35, 40, 56, 60, 63, 65, 67, 75, 84

Rebel® Crawfish™

The Rebel® Crawfish™ is the original realistic crawfish crankbait. These baits mimic a fleeing crawfish. The distinct, pulsating action is irresistible and extremely effective in rivers and streams.

The configuration of the Rebel Crawfish is the exclusive property of EBSCO Industries and are protected by U.S. Trademark Registration Number 1,601,036.



REBEL

Little Lures Land Lots of Fish.



Model	Name	Size (In)	Size (cm)	Weight (oz)	Weight (g)	Hook Size	Cranking Depth (ft)
F71	Wee Frog	2	5.08	3/8	10.5	#6	3-4*
F70	Teeny-Wee Frog	1 1/2	3.81	1/8	2.5	#14	0-2*
S72	Hellgrammite	1 3/4	4.45	3/32	2.4	#14	Sinker

*depths are approximate and obtained using 6lb test Silver Thread® line

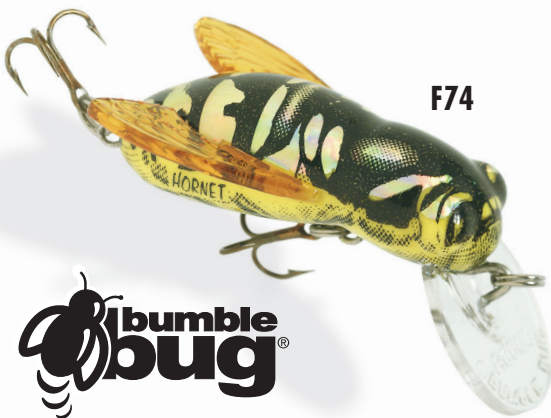
Rebel® Ultralights

Whether an expert wading their favorite smallmouth stream or a young angler fishing along the bank of a nearby pond, Rebel® ultralights produce fish for everyone, every time!

The configuration of the Rebel Wee Frogs are the exclusive property of EBSCO Industries and are protected by U.S. Trademark Registration Number 1,603,880.

Model Colors Available

All Available in all colors shown in each model's corresponding color chart.



The Bumble Bug Busy Buzzing Around.



Model	Name	Size (In)	Size (cm)	Weight (oz)	Weight (g)	Hook Size	Cranking Depth (ft)
F74	Bumble Bug®	1 1/2	3.7	7/64	3.0	#14	0-2*

*depths are approximate and obtained using 4lb test Silver Thread® line

Bumble Bug

Bugs on the surface attract fish, and the Rebel™ Bumble Bug is no exception. This ultralight lure features a wide-wobbling action. It can be fished as a topwater lure or as a crankbait. Twitch it. Crank it. Pop it.

Model Colors Available

F74 10, 11, 12, 13, 14, 15





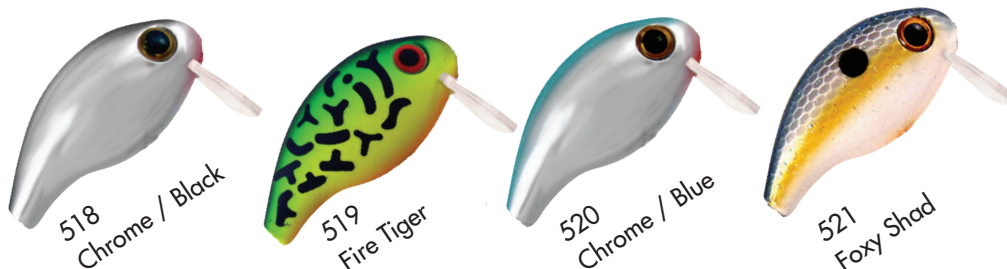
Big Fish Love Little Lures

Teeny Wake-R™

Fishing the Teeny Wake-R is not suggested for those with heart conditions. Whether fished during a shad or baitfish spawn or anytime fish are feeding shallow, the Teeny Wake-R teases with a semi-roll and waking side-to-side action that fish can't resist.

Model	Size(In)	Size(cm)	Weight(oz)	Weight(g)	Hook Size	Cranking Depth(ft)
T91	1 1/2	3.81	5/32	4.42	#12	0-1/2

Depths are approximate and obtained using 12lb test Silver Thread® line



Under Water Walker

Rebel® Raider™

The Rebel Raider is a subsurface walking lure that entices big fish in slim water. Cast and allow to sink below the surface, then begin a twitch-twitch-twitch retrieve to create a fish-catching, side-to-side action. Great for bass, panfish, trout and other gamefish.



Model	Size(In)	Size(cm)	Weight(oz)	Weight(g)	Hook Size	Cranking Depth(ft)
S60	1 5/8	4.128	1/8	3.3	#12	Sinker





They're Coming Fast Down the Track!

Jointed Fastrac® Minnow

Great Lakes anglers have seen trolling lures come and go. Rebel's Fastrac® series, however, has remained a trolling standard since their introduction. Their angled bills give the tight action and high speed trolling ability that other lures just can't match.

Model	Name	Size (In)	Size (cm)	Weight (oz)	Weight (g)	Hook Size	Cranking Depth (ft)	Trolling Depth (ft)
FTJ3	Jointed Fastrac®	5 1/2	13.97	1/2	20	#2	5-7	14.5
FTJ2	Jointed Fastrac®	4 1/2	11.40	3/8	13	#4	5-7	13.5

*depths are approximate and obtained using 10lb test Silver Thread® line at 120 feet back

Model Colors Available

FTJ3 01, 03, 15SS

FTJ2 01, 02, 03, 15SS



01 Silver/Black



02 Gold/Black



03 Silver/Blue



15SS Chrome/Blue/Silver

Spoonbills Dig Down a little Deeper.



DJ30

Spoonbill Minnow

The Rebel® Spoonbill Minnow is equipped with super-strong corrosion resistant hooks and a tight defined wiggling action. It digs deep and catches a variety of species.

Model	Name	Size (In)	Size (cm)	Weight (oz)	Weight (g)	Hook Cranking		Trolling
						Size	Depth (ft)	Depth (ft)
DJ30	Jointed Spoonbill	5 1/2	13.97	3/4	21	#2	8-10	16.9

*depths are approximate and obtained using 10lb test Silver Thread® line (trolling depths measured 120ft back with .0134" diameter line)

Model	Colors Available
DJ30	01S, 03S



01S Silver / Black



03S Silver / Blue

Jumpin' Minnow®

The 3 1/2 inch T10 Rebel Jumpin' Minnow has re-surfaced after a period of obscurity, during which time, veteran anglers vigilantly guarded their remaining stock. A Jumpin' Minnow glides from side to side, skimming the surface like a baitfish fleeing a furious predator, and its old-style lead rattle creates a distinctive call that beckons fish from far away. It casts like a bullet and ranks among the easiest to work of all walking baits.

Back by Popular Demand.



T10



00CB Bone / Chartreuse
Back Orange Belly

01 Silver / Black

00 Bone

03 Silver / Blue

Model	Name	Size (In)	Size (cm)	Weight (oz)	Weight (g)	Hook	Cranking
						Size	Depth (ft)
T10	Jumpin'® Minnow	3 1/2	8.89	3/8	8.8	#6	Topwater

Model	Colors Available
T10	00, 01, 03, 00CB

When Appearance is at a Premium.

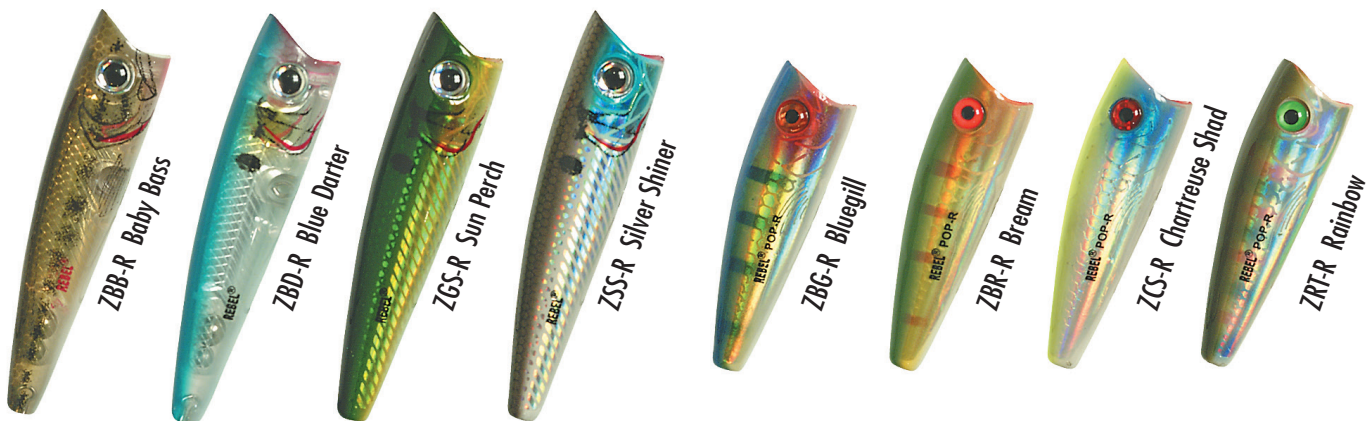


Model	Name	Size (In)	Size (cm)	Weight (oz)	Weight (g)	Hook Size	Cranking Depth (ft)
P66	Super Pop-R®	3 1/8	6.66	5/16	8.7	#4	topwater
P60E	Pop-R®	2 1/2	6.35	1/4	7.0	#6	topwater

Model	Name	Colors Available
P66	Super Pop-R®	ZBB-R, ZBD-R, ZGS-R, ZSS-R
P60E	Pop-R®	ZBG-R, ZBR-R, ZCS-R, ZRT-R

Premium Pop-R®

These surface poppers produce just the right "spit" and sound as they dance across the water's surface. Realistic appearance, super design, terrific action and XCalibur® Tx3™ Rotating Treble Hooks bring the Premium Pop-R® to life and the fish can't resist.



Often Imitated, Never Duplicated.

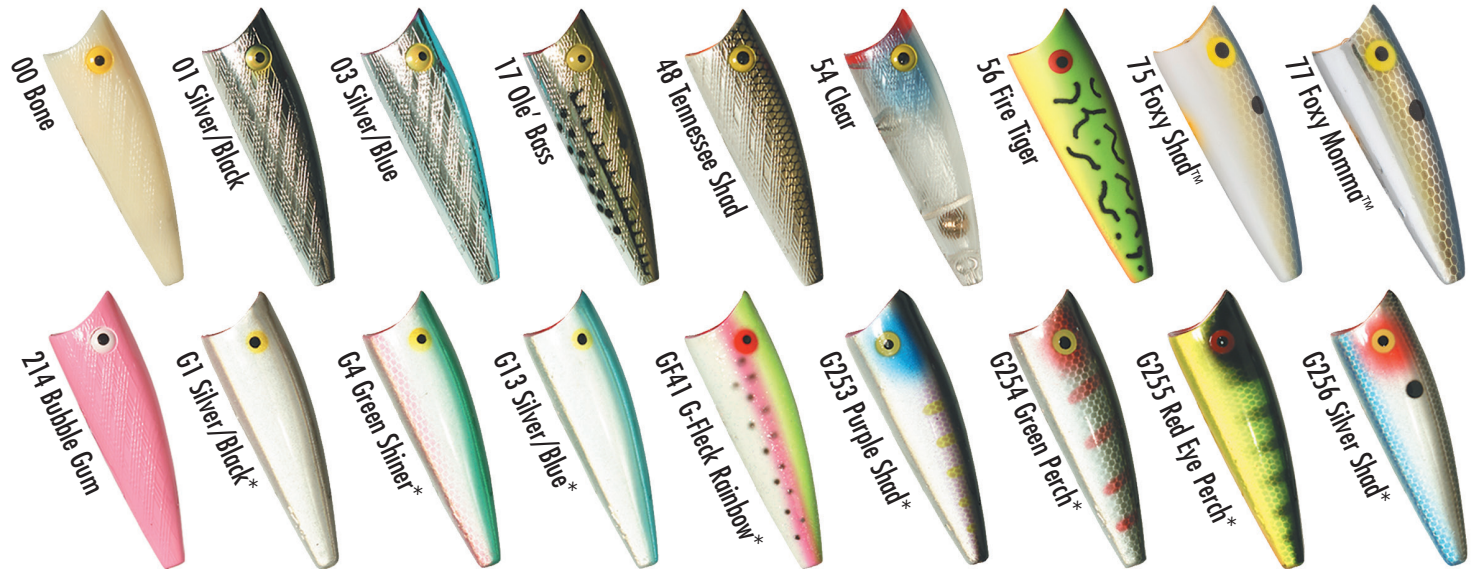


Model	Name	Size (In)	Size (cm)	Weight (oz)	Weight (g)	Hook Size	Cranking Depth (ft)
P65	Magnum Pop-R®	3	7.62	1/2	14.0	#4	topwater
P61	Pop-R® Plus	2 1/2	6.35	1/4	7.6	#6	topwater
P60	Pop-R®	2 1/2	6.35	1/4	7.8	#6	topwater
P50	Teeny Pop-R®	2	5.08	1/8	3.5	#8	topwater

Model	Name	Colors Available
P65	Magnum Pop-R®	00, 01, 03, 17, 48, 56, 75, 77, G253, G254
P61	Pop-R® Plus	G253, G254, G255, G256
P60	Pop-R®	00, 01, 03, 17, 48, 54, 56, 75, 77, 214, G1, G4, G13, GF41
P50	Teeny Pop-R®	00, 01, 03, 17, 48, 54, 56, 75, 77

Pop-R®

Often copied but never matched, the Rebel Pop-R® remains the standard by which all other topwater poppers are judged. Don't be fooled by the imitations. This is the original Pop-R®.



* G-Finish

REBEL

The One That Started It

is still swimming strong.



Rebel® Minnow

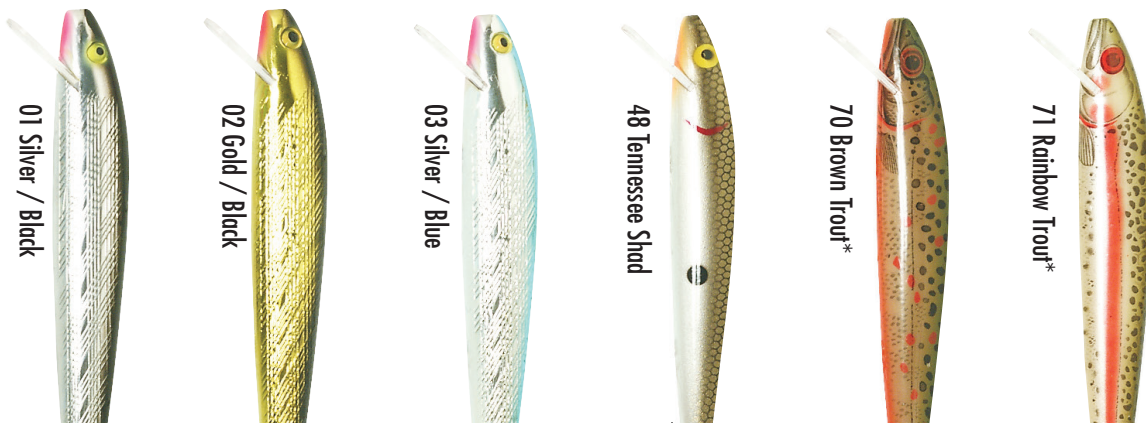
The 3 1/2" Rebel® Minnow (F10) was the first hard plastic Rebel™ lure produced. Its success came almost overnight. Demand quickly grew for other sizes and styles of the now legendary Rebel® Minnow. For traditional, dependable, true-running action, nothing compares to the one that started it all — the Rebel® Minnow.

Model	Name	Size (In)	Size (cm)	Weight (oz)	Weight (g)	Hook Size	Cranking Depth (ft)
J20S	Jointed Minnow	4 1/2	11.47	7/16	11.3	#4	0-3**
F10	Minnow	3 1/2	8.95	5/16	7.6	#6	0-3***
J10	Jointed Minnow	3 1/2	8.80	5/16	7.5	#6	0-3***
J50	Jointed Minnow	2 1/2	6.51	1/8	3.3	#10	0-2****
F49	Minnow	1 5/8	4.13	5/64	2.2	#12	0-2*****
J49	Jointed Minnow	1 7/8	4.71	3/32	2.6	#14	0-2*****

*using 14lb test line, **using 10lb test line, ***using 8lb test line, ****using 6lb test line, *****using 4lb test line Silver Thread® line used for all results.

Model	Colors Available	Model	Colors Available
J20S	01, 02, 03	J50	01, 02, 03
F10	01, 03	F49	01
J10	01, 02, 03	J49	01, 02, 03, 48, 70, 71

REBEL



*Naturalized



Rebel® Banner



Item #	Description
UW10373	Banner. Made of white, weatherproof Tyvek®. Grommet in each corner. Color logo printed with weather resistant ink.

REBEL[®] REBEL

America's Favorite Fishing Lures[™]



Rebel Lure Company
PRADCO-Fishing
3601 Jenny Lind Road • Fort Smith, AR 72901
Phone: 479-782-8971 • Fax: 479-783-0234
www.RebelLures.com

EBSCO
Industries,
Inc.



Printed in the U.S.A. ©Copyright 2012
All patents and trademarks in this catalog are property of EBSCO Industries.