

LX-30IR

GAME SPY DIGITAL CAMERA

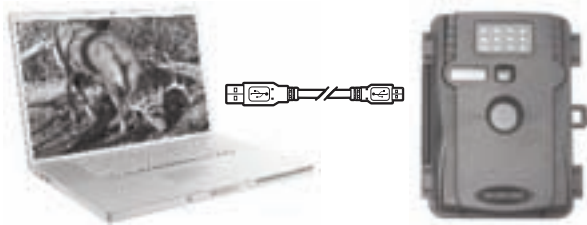
Instruction Manual



MFH-DGS-LX30IR

Connecting to Computer

To connect the camera to a PC computer, press and hold the (On/Off) button until LCD turns on, slide the (Mode) switch to (Setup). Connect the USB cord (not included) between the USB out port and the PC computer. The computer will recognize the camera as a removable drive. Copy the images and videos from the camera onto your PC for further editing or printing. When the USB cable is disconnected, the camera will go back to (Setup) mode.



Warnings & Regulations



FCC Statements

Note: changes and modifications not expressly approved by the party responsible could void the user's authority to operate this device. This device complies with Part 15 of the FCC Rules. Operation is subject to the following two conditions: (1) This device may not cause harmful interference, and (2) this device must accept any interference received, including interference that may cause undesired operation.

NOTE: THE MANUFACTURER IS NOT RESPONSIBLE FOR ANY RADIO OR TV INTERFERENCE CAUSED BY UNAUTHORIZED MODIFICATIONS TO THIS EQUIPMENT. SUCH MODIFICATIONS COULD VOID THE USER'S AUTHORITY TO OPERATE THE EQUIPMENT.

NOTE: This device complies with the limits for a Class B digital device, pursuant to Part 15 of the FCC Rules.

These limits are designed to provide reasonable protection against harmful interference in a residential installation. This device generates, uses, and can radiate radio frequency energy and, if not installed and used in accordance with the instructions, may cause harmful interference to radio communications. However, there is no guarantee that interference will not occur in a particular installation. If this device does cause harmful interference to radio or television reception, which can be determined by turning the equipment off and on, the user is encouraged to try to correct the interference by one or more of the following measures:

- Reorient or relocate the receiving antenna.
- Increase the separation between the equipment and receiver.
- Connect the equipment into an outlet on a circuit different from that to which the receiver is connected.
- Consult the dealer or an experienced radio/TV technician for help.

This product may not comply with California Proposition 65 standards, known to the state of California to cause birth defects or other reproductive harm.

Table of Contents

Introduction	
Important Care & Caution Information	
Important Battery Information	
Moultrie Limited Warranty.....	2
Quick Start Guide.....	3
Default/Easy Start	
Specifications.....	4
Product Overview.....	5
Definitions.....	6
Camera Setup.....	7 & 8
Programming Camera.....	9 & 10
Capture Modes	
Memory & Storage.....	11
Downloading & Viewing Images	
Warnings & Regulations.....	12



Introduction

Thank you for your purchase of Moultrie LX-30IR Infrared Surveillance Camera.

Your LX-30IR camera is a compact high performance digital surveillance camera that uses infrared detection. Your game camera uses an infrared detector to sense heat changes in the surrounding environment. When movement from a heat source such as people or animals is detected, the camera will trigger and take a picture or video clip. It is a rugged camera that is an ideal tool for spotting game or general surveillance.

Please enjoy this quality product and follow these simple instructions, to keep your camera working properly and pay attention to the following care and caution Information:

Important Care & Caution Information

- Do not attempt to open the camera for any unauthorized service. This will void the warranty.
- Keep the memory card out of the reach of children in order to avoid any risk of it being swallowed.
- When the camera is not in use, please remove the memory card and batteries.
- Please don't subject this camera to a strong shock or pressure. It can cause a loss in the weather resistant performance.
- Do not touch the lens with fingers. Use a soft lens cloth to clean lens.

Important Battery Information

- Only use Alkaline batteries. We recommend the use of Duracell® or Energizer® batteries.
- Do not mix old and new batteries. Always replace ALL the batteries at the same time.
- When the camera is not in use, please remove the batteries.

Moultrie Limited Warranty

This product has been thoroughly tested and inspected before shipment. It is guaranteed from defects in material and workmanship from the date of purchase for 1 year. Under this limited guarantee we agree to replace or repair free of charge any part or parts which have been found to be defective in original material or workmanship. Should you require in-warranty service, call our Customer Service Department. If your problem cannot be addressed over the telephone, we may need you to send us your defective product plus proof of purchase.

IMPORTANT:

You must activate your warranty online at: www.moultriefeeders.com/warranty to be covered.

Customer Service Contact Information

Our Service Department will gladly answer any questions you may have.

Call: Toll Free: (800) 653-3334

Address: 150 Industrial Road • Alabaster, AL 35007

Hours: Monday - Friday 8:00am to 5:00pm CST

Register Online: www.moultriefeeders.com/warranty

Memory & Storage

Your camera supports external SD memory card ONLY and will accept up to a 32GB card. Using large memory cards can slow the camera response. If the camera cannot capture any photo or video without external memory, please insert a SD memory card to operate camera. Estimates are based on the most common types of memory cards that can be purchased at electronic stores, office supply stores, or online. Estimates may vary based on camera settings or environmental conditions.

Memory Full

When the LCD shows (FULL), it means that the memory is full. The camera will shut off automatically to save battery life. Please insert an empty SD memory card for memory space.

Important: Always turn the unit off when inserting or removing an SD memory card to avoid damage and ensure that the camera properly updates the memory information.

Auto Mode		
SD Card:	2 GB	16 GB
HIGH 2560 x 1920	534	5,353
LOW 640 x 480	8,000	64,000
Video Mode		
SD Card:	2 GB	16 GB
AVI 640 x 480	204	1,632

Actual capacity will vary based on image properties.



Downloading & Viewing Images

There are a number of ways for you download and view the pictures, videos in the field or at another location.

In the Field

You can download the pictures, videos, and time lapse pictures with the aid of external devices. To download in the field use a devise that supports SD cards or a mini USB jack.

Removing

To remove the SD Memory Card open the camera cover and push gently on the SD card and it will pop out slightly allowing you to remove it. Load the SD card into the player or card reader to view or move stored images to another location.

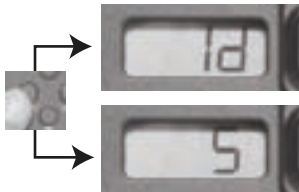
Important: Make sure that the camera is in the OFF position before removing SD memory card.



See the full line of Moultrie camera accessories at www.moultriefeeders.com

Setting Camera ID

Press the (Select) button to select an Identity for your camera. Choose between nine (1 - 9) different numbers so the locations can be marked every time the camera is triggered. After the selections have been made, press the (Select) button and the LCD will display the time again. This concludes the LCD readout display settings.



Setting Time Delay

To set the time delay, slide the (Delay) switch to the desired time. There are 4 time delay settings, 1 min, 5 mins, 10 mins and 30 mins.



Setting Image Quality

Slide the (Resolution) switch to the desired setting. Choose one of 3 settings. High: 2560x1920 or Low: 640x480 for still images. Choose (VID) for the video setting.



Sleep Mode

After all your settings have been made, slide the (Mode) switch to (Auto) and close the cover.

Note: If there is no activity within 2 minutes, the camera will enter sleep mode to conserve battery life. The camera will then power up and become active when motion is detected.



Capture Modes

Photo Mode

To operate the camera in (Photo) mode, slide the (Resolution) button to the (HI) or (LO) position. Slide the (Mode) switch to (AUTO) position. The LCD display will count down for 10 seconds. After the LCD goes off, the camera is ready for capturing photo.



Video Mode

To operate the camera in (Video) mode, slide the (Resolution) button to the (VID) position. Slide the (Mode) switch to (AUTO) position. The LCD display will count down for 10 seconds. After the LCD goes off, the camera is ready for capturing video. (10 second video clips at (30 FPS) frames per second).



Quick Start Guide

Use the steps below as a guide to quickly set up your camera so it will function using the factory default settings.

STEP 1

Open camera cover. Install 4 C-Cell Alkaline batteries. Make sure that the polarities on the batteries match the polarities indicated in the battery chamber. Recommended for use: Duracell® or Energizer® batteries.



STEP 2

Insert SD Memory Card until you hear an audible click. *Camera will not operate without SD Card.* Slide the (Mode) Switch to Setup. Turn the power ON. Press and hold (On/Off) button until LCD activates. Set the time and date with navigation buttons, (Up/Down - Select/Enter).



STEP 3

Mount Camera in desired Location using a mounting strap. Switch camera to IR Aim. Aim camera using motion detection to determine target area. Walk in front of the camera at the desired distance and the camera LED will flash showing the covered area.



STEP 4

Set the (Delay) and (Resolution). Slide the (Mode) switch to (Auto). The camera will start count down. Close cover and secure. The camera will operate using (Default) settings. You may also customize the settings if required.



Default/Easy Start

Factory Settings			
PHOTO QUALITY:	HIGH 2560 x 1920	FILE COUNT:	0001
TIME/DATE:	AM12:00 2011/1/01	CAMERA ID:	1

System Requirements

OS:	Microsoft® Windows® XP with Service Pack 2 (Service Pack 3 recommended); Windows Vista® Home Premium, Business, Ultimate, or Enterprise with Service Pack 1; or Windows 7
Hard disk space:	100MB or above
CPU:	Intel® Pentium® 4 or AMD Athlon® 64 processor or above
Memory:	1GB of RAM

Specifications

Operational Mode	Auto - Game Detect / Video - 10 sec. AVI clips
Resolution	5.0 MP
Still Resolutions	JPEG - Low 640x480, High 2560x1920
Video Resolutions	AVI - 640x480 at 30FPS
Image Format	USB OUT or SD Card
Response Time	1.2/1.5 seconds
Sensor	2.0 MP
Housing	Weather-resistant and lockable
Display	Liquid Crystal Display (LCD)
LCD Status Display	Picture Count
Status LED	Camera, or IR activity
SD Memory Card	Up to 32 GB SD card (not included)
Format	JPEG - Still pictures, AVI - Video: 10 second clips
USB Output	Requires PC / MS Windows XP/Vista/7
Picture Delay	Variable 1, 5, 10, 30 minutes
Standby Time	170 days
Run Time	90 days
Focus	5' - Infinity
Infrared Sensor	Passive
Infrared Range	Up to 40'
Flash Type	12 LED's 850nm
Flash Range	5' - 40'
Note	When batteries become weak, the flash power is reduced to increase run time.
Upgradeable Software	Yes
Easy Read Bar	Camera ID / Date / Time
Power Supply	4 C-Cell Alkaline batteries (not included)
External Power port	12V
Size	7" x 5" x 2.5"

Setup and Programming

Navigating Different Settings

During the (Setup) mode, you can program the camera for different settings. The (Enter) button will start the programming process when the selection flashes. The (Up/Down) buttons will move from one value to the next. The (Enter) button will then lock in any selections. Then press the (Select) button again to move to the next setting.



Turning Power ON/OFF

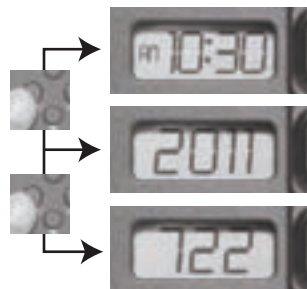
Open the camera cover. Turn the (Mode) switch to the (Setup) position. Press and hold the (On/Off) button until the time appears on the LCD display. If you want to turn the unit off, press the (On/Off) button once, the LCD shows "OFF" and then goes off.



Note: If there is no activity for 2 minutes the camera will shut off automatically to save battery life.

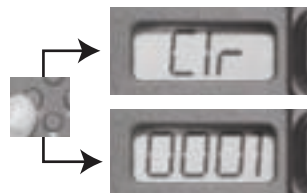
Setting Time and Date

While the camera is in the (Setup) mode, the LCD Display will show the time. Press the (Enter) button and the selection will flash. Use the (Up/Down) buttons to move from one value to the next. Press the (Enter) button to make the selection. Press the (Select) button to move to the next selection. Repeat the process to set the year, month and day.



Reset Picture Count

After the camera's time and date have been set, you can reset the picture count on the camera. Press the (Select) button until (Clr) shows in the LCD display. Press (Enter) button and use the (Up/Down) buttons to choose between Yes or No. (Yes) will reset file number to start from 0001.



Aiming Camera

After the camera has been mounted, open the cover and slide the (Mode) Switch to (IR Aim). Close Cover. Stand in front of the camera. The (Status) LED will flash red when it detects movement. Use this process to guide your camera to cover the desired target area.



Moultrie Accessories

Using a Tripod

Set the Tripod facing up or down the trail approximately 3 ft. high. Screw the camera onto the Tripod head in a clockwise direction. Lock the tripod into place.

Hint: Place something heavy around the legs of the tripod to help hold the tripod in place. Camouflage the tripod with local brush.

Note: Make sure that the brush does not interfere with the camera.



Using a Tree Mount

The camera can also be mounted directly to a tree using a mounting bracket that attaches directly to a tree or pole. Strap the tree mount to the tree and secure, then attach the camera to the tree mount using the tree mount socket located on the back of the camera.



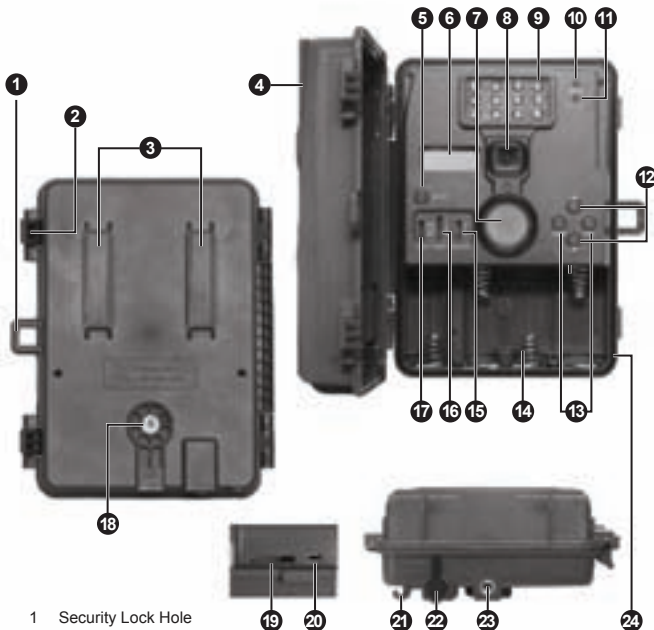
Using Power Panel

Place near the tree where the camera is mounted. Place for best exposure to sun. To attach to a tripod secure the power panel to the tripod angled upward for best exposure. Plug the power panel to the 12V Power Panel Plug. This will extend the life of your camera in the field.

Note: Leave batteries in the camera installed during use.



Product Overview



- 1 Security Lock Hole
- 2 Cover Latch
- 3 Mounting Strap Slot
- 4 Front Cover
- 5 On / Off Button
- 6 LCD Display
- 7 Infrared Sensor
- 8 Lens
- 9 LED Infrared Flash
- 10 Red Status Indicator
- 11 Green Battery Indicator
- 12 Up / Down Buttons
- 13 Select / Enter Buttons
- 14 Battery Chamber
- 15 Resolution Switch
- 16 Delay Switch
- 17 Mode Switch
- 18 Tree Mount Socket
- 19 SD Card Slot
- 20 USB Out Port
- 21 Cord Strain Relief
- 22 12V DC Power Panel Plug
- 23 Tripod Mount Socket
- 24 Water-resistant Seal

Definitions

- 5 **ON/OFF Button**
Press and hold the (ON/OFF) button down until the LCD display activates. To turn the camera off, Press and hold the (ON/OFF) button down until the LCD display deactivates.
- 6 **LCD Display**
Shows important operational information such as time, date, picture count, and camera ID.
- 7 **Infrared Sensor**
Detects motion and tells the camera when to activate using the preferences setup by the user.
- 8 **LED Infrared Flash**
In low light situations the LED flash will activate using infrared technology.
- 10 **Status LED Indicator**
The LED Indicator will turn red when motion or heat is detected while using the IR Aim function.
- 11 **Battery LED Indicator**
Turns green to Indicate batteries are low and need to be replaced.
- 12 **Up / Down Buttons**
The up or down buttons are used to move up or down to change the values for each setting.
- 13 **Select / Enter Button**
Used to select the settings for the camera.
- 14 **Battery Chamber**
Used to store batteries. Note: make sure that your (+ or -) polarities match the polarities indicated inside the battery chamber.
- 15 **Resolution Switch**
Depending on the position of the switch, there will be 1 video option: (VID) and 2 still image resolutions: (HI and LO).
- 16 **Delay Switch**
Depending on the position of the switch, there are 4 time delay: 1 min, 5mins, 10mins and 30mins.
- 17 **Mode Switch**
IR Aim Mode
Infrared detection is used to assist in aiming the camera at your desired target area. Note: the camera must be on to use the IR Aim feature.
Setup Mode
Customize the cameras settings by sliding the (Mode) switch to the (Setup) position. Follow the prompts on the LCD display.
Auto Mode
The camera will be operational and capture images or videos when the (Mode) switch is in the (Auto) position. In the (Auto) mode the LCD display will show the time and then will count down for 10 seconds. The LCD goes off and the camera will enter (Standby) for capturing images or videos.
- 18 **Tree Mount Socket**
Is used to mount your camera to a tree or pole using tree mount tripod accessory.
Sold separately, visit us at www.moultriefeeders.com for more information.
- 19 **SD Card Slot**
Will accept SD cards up to 32 GB. To remove SD card gently push the card inward and let go, the card should pop out enough to remove.
- 20 **USB Out Port**
Is used to connect your camera to a computer or external device to download, view, or delete pictures and videos off the camera.
- 22 **12V DC Power Panel Plug**
Used to connect an external power source. Accepts Moultrie accessories. Visit us at www.moultriefeeders.com for more information.
- 23 **Tripod Socket**
Is used to mount your camera to a tripod when necessary. Sold separately, visit us at www.moultriefeeders.com for more information.
- 24 **Water-Resistant Seal**
Helps keep moisture out of the unit during wet conditions.

Camera Setup

Battery Installation

Open the camera cover and install 4 C-Cell Alkaline batteries. Make sure that the (+ and -) polarities match the polarities indicated inside the battery chamber.

Note: Anytime you load or unload batteries, make sure that the camera is OFF. If using 12V DC Power Panel Plug, do not remove internal batteries.



Insert SD Card

You will need to open the front cover to insert a SD memory card. You can insert a SD Card up to 32 GB. Insert the SD card in the direction indicated on the card, until you hear an audible click.

Note: Camera will not operate without an SD memory card installed.



Power ON

Slide the (Mode) Switch to the (Setup) position. Press and hold the (ON/OFF) Button until the time appears on the LCD Display. The camera will power up.



Mounting with a Strap

Close cover and place camera on a tree or pole approximately 3 ft. high. Thread the mounting strap through the mounting strap slots on the back of the camera and secure.

Hint: If you are mounting camera to cover a trail face the camera down the trail tilted at a slight downward angle.

Face the camera North or South to avoid over exposure from the sun.

Clear brush away from camera front to avoid false triggers from the wind.

