

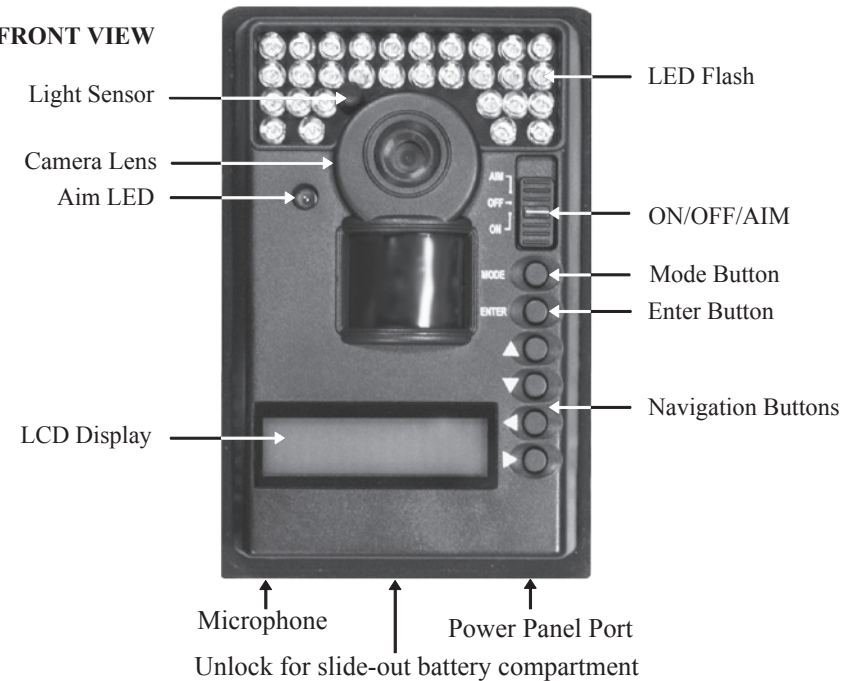


Instructions for M-80BLX GameSpy Digital Camera

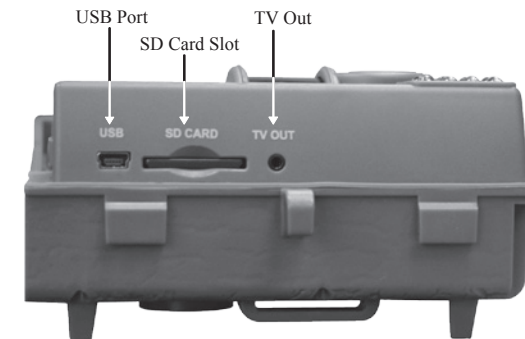
THANK YOU for your purchase of the M-80BLX GameSpy Digital Camera. Please read this booklet before using the unit. If you should have any questions about this product or any other Moultrie product, please contact us using the information on the back of this booklet. Please register your camera at www.moultriefeeders.com to activate your warranty.

I GAMESPY OVERVIEW

FRONT VIEW



SIDE VIEW



Our Service Department will gladly answer any questions you have. Call 205-664-6700 or 800-653-3334, Monday - Friday, 8:00 AM to 5:00 PM CST.
www.moultriefeeders.com



I GAMESPY OVERVIEW (cont.)

ON / OFF / AIM SWITCH

Used for turning On, turning Off, or Aiming the camera. When in AIM position the red LED light on the front of the camera will illuminate. To help find the center field of view for the camera, stand out in front of the camera and move left or right as you observe the AIM LED - as you walk away from direct center the LED light will be less bright. As you walk towards center the LED will appear brighter.

MODE BUTTON

The Mode Button selects Camera Setup or Main Screen. When camera mode is selected, the UP and DOWN buttons navigate through the menu options. The Mode Button is also used to wake-up the camera and turn on the display when the camera is in a power saving mode.

ENTER, UP/DOWN and LEFT/RIGHT BUTTONS

The ENTER button selects the item to be changed. The UP/DOWN and LEFT/RIGHT buttons are used to step through the menu options. Pressing the ENTER button again, selects the option indicated on the display. The ENTER button is also used to manually take a picture.

BATTERY COMPARTMENT

The Camera is powered by four(4) or eight(8) AA size alkaline or lithium batteries. Slide the Unlock switch to the right and grab the small handle under the switch to slide-out the battery compartment tray.

NOTE: It is recommended to use lithium batteries for best performance.

SD CARD SLOT

Accepts up to a 32GB SD Card for photo and video storage. Note: An SD Card must be installed for the camera to operate (sold separately).

USB PORT

Download still pictures and video onto your computer by connecting provided cable.

POWERPANEL PORT

Accepts the Moultrie PowerPanel accessory (sold separately) only. Refer to www.moultriefeeders.com for more information.

TV OUT JACK

View still pictures and videos on your TV by connecting a 2.5mm video cable (sold separately).

C PLOTSTALKER SAVE FILE

SAVING FILES OVERVIEW

Use the Save File features of the PlotStalker software to create a single photo, reduce the overall size of the .mlt file, exclude unwanted photos in the front, or create a video that can be viewed using a standard media player.

EXPORTING AN IMAGE/PHOTO

- 1 On the main screen, choose a starting image/photo (frame) by using the scroll bar on the bottom of the display or the frame-by-frame search feature.
- 2 Press the SAVE button
- 3 Select the Current Image (*.jpg) radio button
- 4 Press Change... to enter the directory and filename to save the image
- 5 Press Export to save the file

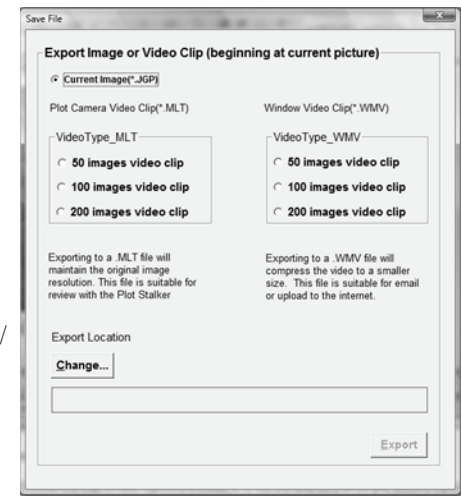
EXPORTING MLT FILE

- 1 Select the appropriate 50, 100, or 200 images video clip radio button. This will create a MLT format file from the starting frame plus the next 50, 100, or 200 frames.
- 2 Select the Change button to select the desired location to save the export file.
- 3 Enter the directory and filename to save the file
- 4 Select the Export button to save the file. These files are viewable with Plot Stalker Software.

EXPORTING WMV FILE

- 1 Select the appropriate 50, 100, or 200 images video clip radio button. This will create a .wmv format file of the starting frame plus the next 50, 100, or 200 frames.
- 2 Select the Change button to select the desired location to save the export file.
- 3 Enter the directory and filename to save the file
- 4 Select the Export button to save the file. The program will convert the images to video based on the chosen settings. The .wmv file can be viewed using a standard media player.

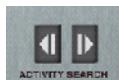
Great for uploading to the internet or emailing.



B PLOTSTALKER ACTIVITY SEARCH

ACTIVITY SEARCH

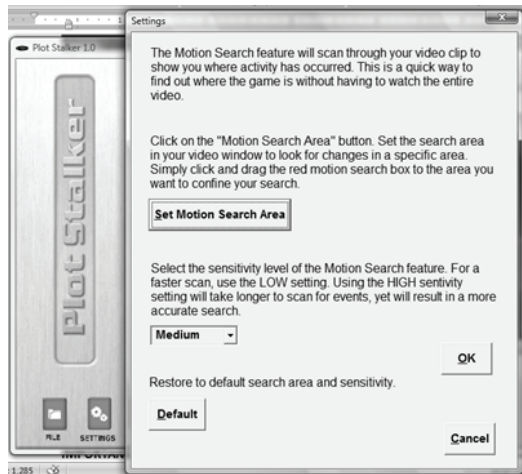
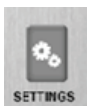
The Search Feature will scan through your photos and automatically look for changes in regions that you identify in Setup.



In search mode, the PlotStalker software scans through the .mlt photo file, stops on a photo when changes are found in your identified region, and then highlights the changes in blue. You can click anywhere in the video viewing area to remove the blue highlights.

ACTIVITY SEARCH SETUP

Click the Settings button to activate the Region and Sensitivity settings for the Activity Search



DEFINE SEARCH REGION

Provides the ability to search for changes in the photo in a specific region rather than the entire photo.

- 1 Click on the Set Motion Search Area Button.
- 2 Use the mouse to select and drag the red outline around the area you want to search for movement. This allows you to focus on a very precise area if required.
- 3 Click OK button on the Settings Popup window to confirm your settings and exit the menu.

SENSITIVITY

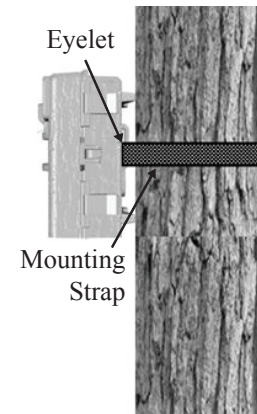
- 1 Set to High, Medium or Low - This sets the level of pixel change the program will detect. Note; a pixel change will occur with a color, intensity, lighting or movement so this setting is critical to obtain the desired results.

DEFAULT SETTINGS

- 1 Click on Default button to return to the default values for Search Area and Sensitivity settings

II QUICK START INSTRUCTIONS

- 1 Slide the UNLOCK switch on the bottom of Camera and use the knob to pull the slide-out Battery Tray. Install four(4) or eight(8) AA size alkaline or lithium batteries with polarities as indicated in the Battery Tray. Re-install the Battery Tray.
- 2 Thread the provided Mounting Strap through the Eyelets on the back of the camera and secure to a tree or pole approximately 36" from the ground as shown.
- 3 Turn Camera on by sliding ON/OFF/AIM switch to the ON position.
- 4 Press the MODE button one time to get to the Camera Setup Menu. Set Time and Date by pressing ENTER, using UP/DOWN to adjust selected field, LEFT/RIGHT to move to the next field and ENTER when done.
- 5 Press MODE button until MENU SELECTION screen is displayed. Use the UP/DOWN buttons until the MAIN SCREEN option is highlighted yellow. Press ENTER.
- 6 Your Camera will now automatically take pictures whenever an animal is detected in range -based on the default settings below.



III DEFAULT SETTINGS

Capture Mode	TRAIL CAM (Still)
Photo Quality	HIGH
Photo Delay after each photo is taken	1 MIN
Multi Shot Count	OFF
Digital Zoom	NO ZOOM
Video Resolution	HIGH
Video Length	5 SEC
Video Audio	ON
Camera Name	MYCAMERA
Temperature	Fahrenheit
Info Strip printed on photos	ON
Plot Frequency	15 SECONDS
Plot Duration	3 HOUR
Default Setting	NO
Delete All?	NO

IV CAPTURE MODES

The GameSpy offers four capture modes as described below. The default capture mode is Trail Cam.

1 TRAIL CAM MODE

Still photos are taken when an animal is detected. The number of photos taken when an animal is detected is configurable in Settings. Photos are stored in the in the DCIM/100_MDGC folder on the SD card.

2 PLOT CAM MODE

The camera takes photos at a specified interval during the day and combines them together to create a Plot Video (*.MLT file) which can be viewed on the supplied Moultrie Plot Stalker software. The camera takes a Plot Video twice a day; once in the morning and once in the evening. The morning Plot Video begins 15 min before sunrise. The evening Plot Video ends 15 min after sunset. See chart below as a reference. The length of each Plot Video is determined by the Plot Duration setting in the camera menu. The camera will detect the correct sunrise and sunset times automatically and adjust itself accordingly. The Plot Videos are stored in :/PLOT folder on the SD card.

IMPORTANT: It will take the camera 24hrs to properly adjust to the correct sunrise and sunset times. As a default the camera will start the morning Plot Video at 5:45am and end the evening video at 6:15pm. To reset the sunrise and sunset times back to the default times, use the Default Settings option in the menu.



NOTE: The camera can still be triggered to take a photo under certain settings while in plot mode. Please see the "Plot Frequency" settings in the camera setup section.

3 HYBRID CAM MODE

Camera operates in Plot Cam mode during the day and Trail Cam Mode during the night. Thirty minutes after dusk the camera will enter the Trail Cam mode and take night photos when the PIR sensor is triggered.

4 VIDEO MODE

Camera records a video when an animal is detected by the motion sensor. During daylight hours the camera will record a video 5, 15 or 30 seconds in length. During night the camera will record a video with a maximum length of 10 seconds. The video length is configurable in SETTINGS.

A PLOTSTALKER SOFTWARE INTRO

INTRODUCTION

In time-lapse photography a series of still photos are taken at regular time intervals. The PlotStalker Software allows you to load the time lapse file that was captured from your Moultrie Game Camera and scroll backward and forward through your photos, single step, search for activity in a designated area, and save the files.



SYSTEM REQUIREMENTS

- Computer: Intel® Pentium® 4 or AMD Athlon® 64 processor or above; 1GB RAM minimum; 100 MB hard disk space minimum.
- Operating System: Microsoft® Windows® 32 bit - XP with Service Pack 2 or later; Windows Vista® Home Premium, Business, Ultimate, or Enterprise with Service Pack 1; or Windows 7

SOFTWARE INSTALLATION

- Insert the PlotStalker CD into your computer and follow on-screen instructions.

LOADING PLOT FILES

- 1 Using standard Microsoft utilities (ex. File Explorer – My Computer), copy the PlotFiles (extension is .MLT) from the PLOT directory on the SD card to the hard disk drive in your computer. Note the location stored on the hard disk drive.
- 2 Open the PlotStalker software application from the Windows Start Button menu. Once in the PlotStalker software, click on the File Button
- 3 Browse to the location in which you have saved the Plot file(s) (.MLT) in step 1 above, select the file of interest and click Open.



BEGIN/END

Goes to the first or last photo in the Plot File.



FRAME BY FRAME SEARCH

Individually step forward or backward through each photo.



REWIND/PAUSE/PLAY

Play photos in sequence, pause, or play the photos in reverse order. These functions simulate a video and are useful for manually searching changes in the photos. When a sequence is being played, press fast-forward or fast-rewind multiple times to increase speed. (1x-5x)



VII GAMESPY CAMERA SPECIFICATIONS

Photo Quality	
LOW	744 x 416
MEDIUM	1480 x 832 (1.3MP)
HIGH	2368 x 1328 (3.2 MP)
ENHANCED	2984 x 1680 (5.0 MP)
Video Quality	
HIGH	720 x 400 @ 24fps
LOW	352 x 192 @ 24fps
Approximate photos stored 1GB SD card	
LOW	10000
MEDIUM	2500
HIGH	1100
ENHANCED	700
Approximate video time stored 1GB SD card	
HIGH	25min
LOW	80min
Optional SD Memory Card	32 GB Max
Optical Field of View	55 degrees
Batteries	Alkaline AA-cells
Approximate Detection Range	45 +/-5 feet

V CAMERA SETUP

Setup Menu - The UP/DOWN buttons are used to navigate through the available setting choices. UP/DOWN moves to the next menu item, and ENTER selects the item to be changed. Additional menu choices are available by hitting the UP/DOWN button when either the first/last option is highlighted.

SETUP DATE/TIME
MM/DD/YY HH:MMAM

Date/Time - Set Date /Time - on the SETUP DATE/TIME screen, use the UP/DOWN buttons to modify the month. Press LEFT/RIGHT buttons to move to the next field. Press the ENTER button again to save your selections. The Time and Date is retained between battery changes. Time is not automatically adjusted for daylight savings.

CAPTURE MODE
TRAIL CAM

Capture Mode - (default Trail Cam) Press the UP/DOWN buttons to highlight the desired mode. Press the ENTER button to save the mode and return to the Camera Setup Menu. There are four capture mode settings –TRAIL CAM, PLOT CAM, HYBRID CAM or VIDEO. Refer to the CAPTURE MODE section of this manual for details.

PHOTO QUALITY
HIGH

Photo Quality - (default High) -The higher the quality of the photo/image the more memory it consumes. However, higher quality images have higher resolution which results in clearer images -especially when zooming in. There are four photo/image quality settings -ENHANCED, HIGH, MEDIUM, and LOW. Press the UP/DOWN buttons to highlight the desired setting. Press the ENTER button to save the setting and return to the Camera Setup Menu. Refer to SPECIFICATIONS section of this document for details on number of images stored based on Photo Quality.

V CAMERA SETUP (cont.)

PHOTO DELAY
1 MIN

Photo Delay - (default 1 minute) -The photo delay determines the number of minutes between pictures when an animal is detected and remains in range. To change the delay time, press the UP/DOWN buttons to highlight the desired setting. Press the ENTER button to save the setting and return to the Camera Setup Menu. Additional menu choices are available by hitting the UP/DOWN button when the first/last option is highlighted. Photo Delays can be set to 5, 15 and 30 seconds, 1, 5, 10, 30 and 60 minutes.

MULTI SHOT
OFF

Multi-Shot - (default OFF) - When the Game Spy Camera is configured for TRAIL in the capture mode screen, the camera can take 2 shot standard or 3 Shot standard, 2 Shot Fast, 3 Shot Fast, and 4 Shot Fast each time an animal is detected. There is an approximate 3-4 second delay between pictures when the 2 shot standard or 3 Shot standard setting is selected. When the 2 Shot Fast, 3 Shot Fast, and 4 Shot setting is selected, the camera will take the selected amount of photos within 1-2 seconds. To choose the desired setting press the ENTER button to enter the Multi Shot settings. Press UP or DOWN to select the desired number of photos. Then press ENTER again to return to the camera setup menu.

VIDEO RESOLUTION
HIGH

Video Resolution - (default High) -Video resolution can be set to LOW or HIGH. The higher the quality of the video, the more memory it consumes. However, higher quality videos have higher resolution.

Low: 352 x 192 @ 24fps High: 720 x 400 @ 24fps
Press the UP/DOWN buttons to highlight the desired setting. Press the ENTER button to save the setting and return to the Camera Setup Menu.

VI ADVANCED INFORMATION (cont.)

3 INFORMATION ON PICTURE

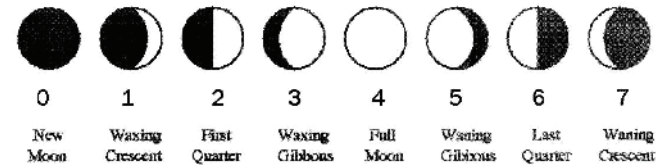
The info strip below will appear at the bottom of the photo/video:

 72°F  01/01/2008 12:00AM MYCAMERA

Temp. Moon Date Time Camera Name

Moon Phase

The icons for the moon phase are as follows:



1 VIEWING PICTURES ON COMPUTER VIA USB

1. Plug provided USB cable into the USB port on your Windows 7/Vista/XP computer.
2. Plug other end of USB cable into the camera's USB port.
3. To access JPG pictures and AVI movie files, navigate to "My Computer" and double click the "Moultrie CAM" drive. Picture files will be stored in the DCIM/100_MDGC directory; video files are located in the DCIM directory.
4. To exit USB mode, follow Windows' instructions for properly disconnecting a removable drive and then unplug.

2 VIEWING PICTURES - TV OUT

1. To enter TV Out Mode, turn on the camera and place in the SETUP mode.
2. Plug RCA jack from TV Adapter Cable (sold separately) into a VIDEO IN port on a TV or VCR.
3. Plug other end of TV Adapter Cable into the TV Out Jack. Pictures are now presented on the TV.
4. To view pictures use the RIGHT or LEFT button to sequence to the next/previous captured picture or video clip. The camera's menu display shows the picture number being viewed.
5. To delete current picture or video, press the DOWN button.
6. To exit TV mode, unplug the TV Adapter Cable from the TV Out Jack and TV or VCR.

FCC Statements



NOTE: Changes or Modifications not expressly approved by the party responsible could void the user's authority to operate this device.

The device complies with part 15 of the FCC Rules. Operation is subject to the following two conditions: (1) this device may not cause harmful interference, and (2) this device must accept any interference received, including interference that may cause undesired operation.

NOTE: THE MANUFACTURER IS NOT RESPONSIBLE FOR ANY RADIO OR TV INTERFERENCE CAUSED BY UNAUTHORIZED MODIFICATIONS TO THIS EQUIPMENT. SUCH MODIFICATIONS COULD VOID THE USER AUTHORITY TO OPERATE THE EQUIPMENT.

NOTE: This equipment has been tested and found to comply with the limits for a Class B digital device, pursuant to Part 15 of the FCC Rules. These limits are designed to provide reasonable protection against harmful interference in a residential installation. This equipment generates noise and can radiate radio frequency energy and, if not installed and used in accordance with the instructions, may cause harmful interference to radio communications. However, there is no guarantee that interference will not occur in a particular installation.

If this equipment does cause harmful interference to radio or television reception, which can be determined by turning the equipment off and on, the user is encouraged to try to correct the interference by one or more of the following measures:

- Reorient or relocate the receiving antenna
- Increase the separation between the equipment and receiver
- Connect the equipment into an outlet on a circuit different from that to which the receiver is connected
- Consult the dealer or an experienced radio/TV technician for help

VIDEO LENGTH
5 SEC

Video Length- (default 5 seconds) -When the Game Spy Camera is configured for VIDEO in the Capture Mode screen, the camera will record video for a designated amount of time each time an animal is detected. To change the amount of time recorded, press the UP/DOWN buttons to highlight the desired setting. Press the ENTER button to save the setting and return to the Camera Setup Menu. The maximum video length for a nighttime IR video is 10 seconds.

VIDEO AUDIO
ON

Video Audio - (default On) - This option allows the user to turn the audio during video recording ON or OFF. When selected and the Game Spy Camera is configured for VIDEO in the Capture Mode screen; the camera will record audio along with the video each time an animal is detected. Press the LEFT/RIGHT buttons to highlight the desired setting. Press the ENTER button to save the setting and return to the Camera Setup Menu.

CAMERA NAME
MYCAMERA

Camera Name - (default MYCAMERA) The Camera Name is imprinted on the photos and provides a point of reference when multiple cameras are used. To change the Camera Name, use the LEFT/RIGHT buttons to highlight the character to be modified. Press the UP/DOWN button to select the desired character (A to Z, 0 to 9, dash or space). Press LEFT/RIGHT to move to the next character. Press the ENTER button to save the new camera name and return to the Camera Setup Menu.

IR TEST
OFF

IR Test- (default Off) When IR Test is ON and the PIR sensor detects motion, the red LED on the front of the camera will come on for 2 sec and then shut off.

V CAMERA SETUP (cont.)

TEMPERATURE
FAHRENHEIT

Temperature - (default Fahrenheit) - The temperature is imprinted on each photo and can be in degrees Fahrenheit or Celsius. To change the temperature units, press the UP/DOWN buttons to highlight the desired setting. Press the ENTER button to save the setting and return to the Camera Setup Menu.

INFO STRIP
ON

Info Strip - (default On) -When the Info Strip is turned ON, the information strip, as described in the Advanced Setup section of this manual, is imprinted on the photos. The Temperature, Moon phase, Date, Time, Camera Name, & Moultrie logo are imprinted on the bottom of each picture. When the Info Strip is turned OFF, the photo contains no information strip. To change the Info Strip setting, press the LEFT/RIGHT buttons to highlight the desired setting. Press the ENTER button to save the setting and return to the Camera Setup Menu.

PLOT FREQUENCY
15 SECONDS

Plot Frequency - (default 15 seconds) - Used to set the time frequency between each photo in plot mode. To change the plot frequency, press the UP/DOWN buttons to highlight the desired setting. Press the ENTER button to save the setting and return to the Camera Setup Menu. Plot frequency can be set to 5, 10, 15, 30, 60 seconds or 2 or 5 minutes.

NOTE: Increasing the Plot Frequency will decrease the battery life of the camera. It is recommended to use lithium batteries for taking plot videos.

NOTE: When the Plot Frequency is set to 60 seconds, 2 minutes or 5 minutes, the cameras motion sensor can still be activated in between photos. When this occurs, a photo will be taken and added to the plot video.

V CAMERA SETUP (cont.)

PLOT DURATION
3 HOURS

Plot Duration - (default 3 hours) – Plot Duration is used to limit the time periods that the camera will be active. To change the plot duration, press the UP/DOWN buttons to highlight the desired setting. Press the ENTER button to save the setting and return to the Camera Setup Menu.

Plot duration can be set to All Day, 1, 2, 3, or 4 hours.

- All Day – Plot cam takes photos all day
- 1 Hour – Plot cam takes photos for 1 hour twice a day.
- 2 Hour – Plot cam takes photos for 2 hours twice a day.
- 3 Hour – Plot cam takes photos for 3 hours twice a day.
- 4 Hour – Plot cam takes photos for 4 hours twice a day.

NOTE: Increasing the Plot Duration will decrease the battery life of the camera. It is recommended to use lithium batteries for taking plot videos.

BATTERY LIFE
67 DAYS

Battery Life- This feature provides an **estimated** battery life of the camera. The battery life is expressed as “### Days”. Pressing the MODE button will return to the Camera Setup menu.

NOTE: The number of days shown is based on using 8 AA alkaline batteries with 5 day and 5 night photos per day. Actual battery life will vary depending on type of battery, weather conditions and camera usage. It is recommended to use lithium batteries for best performance.

DEFAULT SETTINGS
NO

Default Settings - (default No) -To restore all the settings back to the factory default, press the LEFT/RIGHT buttons to highlight the YES setting. Press the ENTER button to restore the default settings and return to the Camera Setup Menu.

DELETE ALL?
NO

Delete All Photos - (default No) - To remove all content on the SD card, press the LEFT/RIGHT buttons to highlight the YES setting. Press the ENTER button to erase photos and return to the Camera Setup Menu.