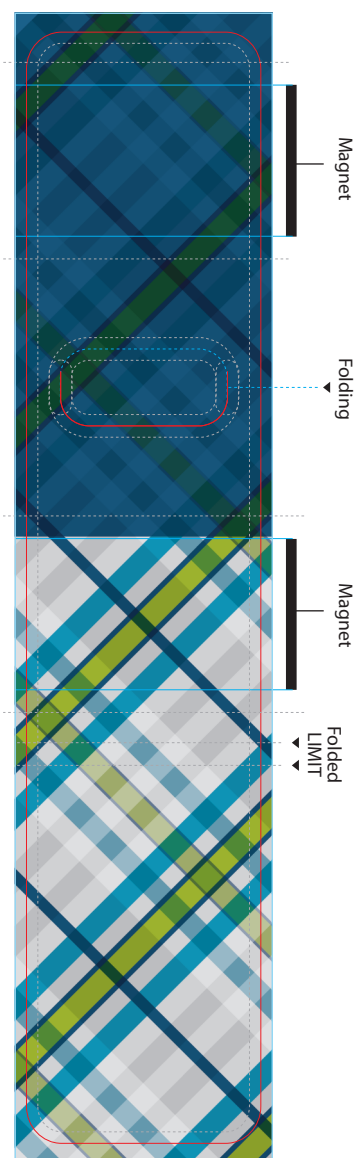
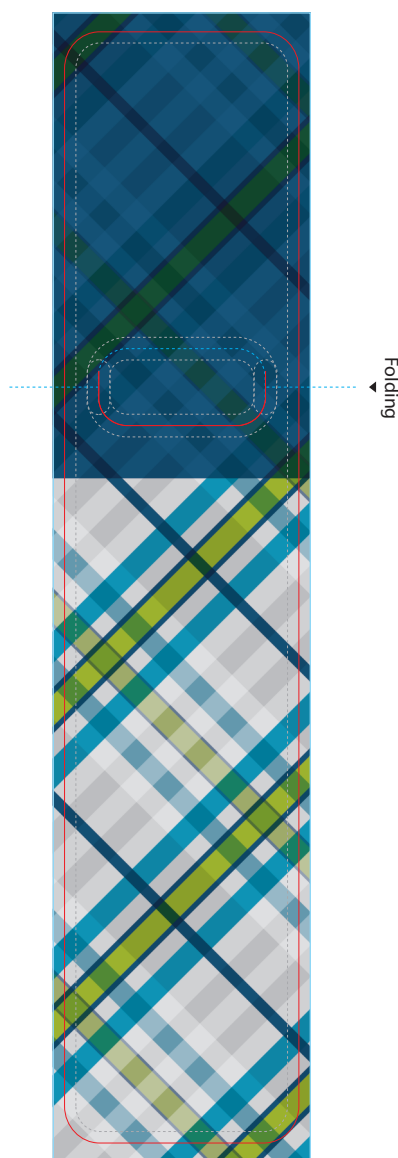


## Temple **VICTRONIC SMALL**

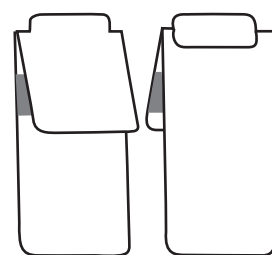


FRONT




BACK


Folding Guide-Line



Front

Back

 Maximum Bleed Area. Please DO NOT exceed the max-area. Please use it at the exact edge.

 Cutting area. Please DO NOT place any element close or over unless you intended/in purpose to be cropped

 Safe. Place all your elemments and text within the SAFE AREA (1/16 from the cropping edge/red line).