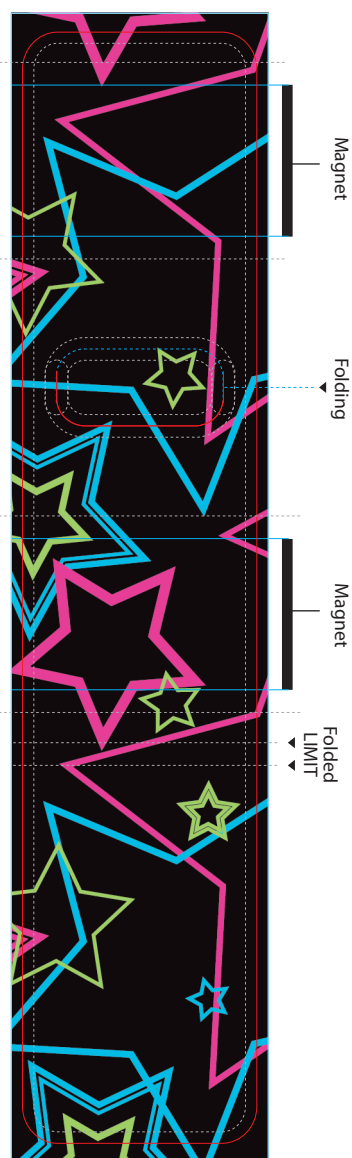


Temple **VICTRONIC SMALL**



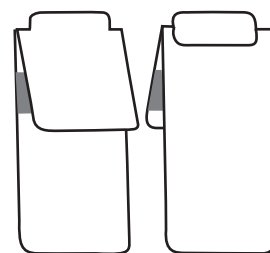
FRONT



BACK

Folding

Folding Guide-Line



Front

Back

- Maximum Bleed Area. Please DO NOT exceed the max-area. Please use it at the exact edge.
- Cutting area. Please DO NOT place any element close or over unless you intended/in purpose to be cropped
- Safe. Place all your elements and text within the SAFE AREA (1/16 from the cropping edge/red line).