

DOODLE REBEL®



America's
Favorite
Fishing
Lures

2

0

1

1

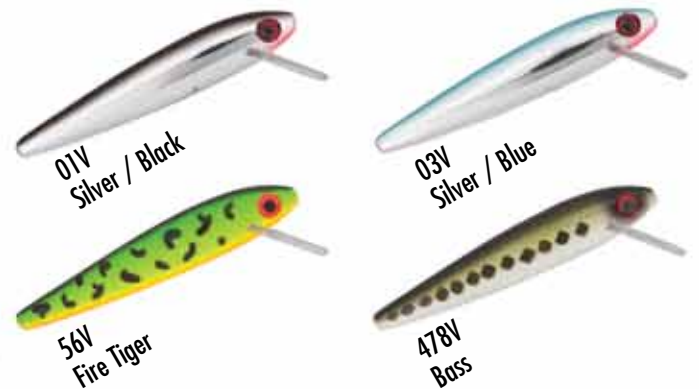
Rebel® Value series

Rebel® Minnow

Perfect for small waters, streams, ponds and shallow water in general, the Rebel F10, F49 and F50 catch fish of all kinds. The smallest of the Minnows, the F49, measures less than 2 inches and dives to about 2 feet. The F50 is 2 1/2-inches and the F10 is the biggest Minnow at 3 1/2 inches. The F10, F49 and F50 are available in four color patterns: Silver / Blue, Silver / Black, Fire Tiger and Bass.

Model	Size(In)	Size(cm)	Weight(oz)	Weight(g)	Hook Size	Cranking Depth(ft)
F49	1 5/8	4.13	5/64	2.2	#12	0-2*****
F50	2 1/2	6.35	1/8	3.6	#10	0-2****
F10	3 1/2	8.95	5/16	7.6	#6	0-3***

*using 14lb test line, **using 10lb test line, ***using 8lb test line, ****using 6lb test line, *****using 4lb test line
Silver Thread® line used for all results.



Super Teeny Wee-R®

The F91 crankbait has the soul of a Wee-R in a tiny body. Seductive shimmy that comes in four color patterns: Brown Crawdad, Fire Tiger, Tennessee Shad and Bass.

Model	Size(In)	Size(cm)	Weight(oz)	Weight(g)	Hook Size	Cranking Depth(ft)
F91	1 1/2	3.81	1/8	3.63	#10	1-3



Getting DOWN To New Levels.

NEW! Tracdown™ Minnow

The classic Rebel F49, F50, and F10 now come in sinking Tracdown versions, which expands the versatility of these incredible fish-catchers. Now bass, trout, walleye and other predator fish don't stand a chance no matter how deep they are holding. Awesome color patterns, 3-D eyes and black nickel hooks at a great price! Perfect for fishing in current.

Model	Size(In)	Size(cm)	Weight(oz)	Weight(g)	Hook Size	Cranking Depth(ft)
TD49	1 5/8	4.13	3/32	2.4	#14	0-2*****
TD50	2 1/2	6.35	5/32	4.3	#10	0-2****
TD10	3 1/2	8.95	3/8	10.4	#6	0-3***

using 8lb test line, *using 6lb test line, *****using 4lb test line Silver Thread® line used for all results.



You've seen them spit, but have You heard Grasshoppers Pop?



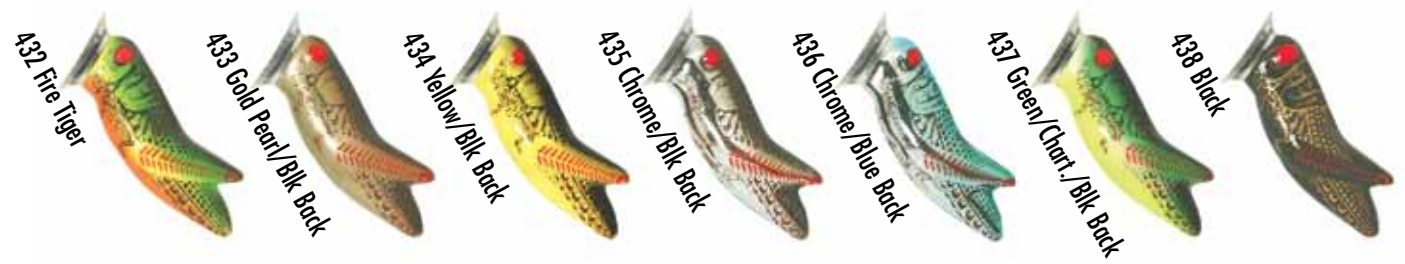
P73

Crickhopper Popper™

You've fished with real grasshoppers, now fish with this: the Rebel® Crickhopper Popper™. It's the first "popping" critter of its kind. This realistic ultralight will cause such a commotion that you'll catch fish all day long. Twitch it to make it "pop" across the water.

Model	Name	Size (In)	Size (cm)	Weight (oz)	Weight (g)	Hook Size	Cranking Depth (ft)
P73	Crickhopper Popper™	1 3/4	4.5	3/16	4.2	#10	Topwater

Model	Colors Available
P73	432, 433, 434, 435, 436, 437, 438



Half Grasshopper, Half Cricket.



F73

F73M

Crickhopper™

Catching fish for almost 20 years — the Crickhopper™ resembles crickets and grasshoppers during different stages of the year and can be used as a topwater lure or as a crankbait.

Model	Name	Size (In)	Size (cm)	Weight (oz)	Weight (g)	Hook Size	Cranking Depth (ft)
F73M	Bighopper	1 3/4	4.95	1/4	3.79	#10	0-3
F73	Crickhopper™	1 1/2	3.81	3/32	2.8	#14	0-3

*depths are approximate and obtained using 12lb test Silver Thread® line

Model	Colors Available
F73M	56, 94, 95, 96, 97, 314
F73	56, 94, 95, 96, 97, 314





The Original Crawfish.

Model	Name	Size (In)	Size (cm)	Weight (oz)	Weight (g)	Hook Size	Cranking Depth (ft)
D74	Big Craw	2 5/8	6.65	7/16	11.6	#4	8-10*
D76	Deep Wee	2 3/8	5.84	3/8	9.5	#6	8-10*
F76	Wee-Crawfish™	2	5.08	1/5	6.0	#8	5-7**
D77	Deep Teeny Wee	1 1/2	3.81	1/9	3.0	#14	4-5**
F77	Teeny Wee-Crawfish™	1 1/2	3.81	1/10	2.8	#14	2-3**

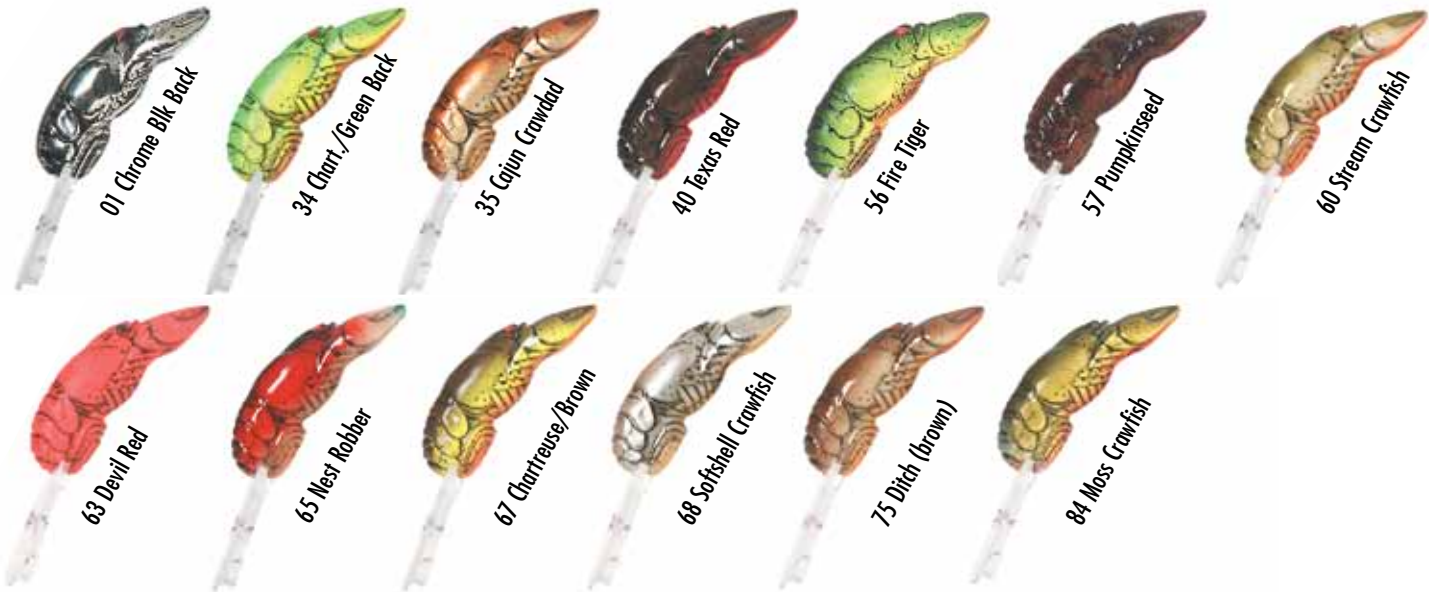
*using 10-12lb test line, **using 10lb test line, ***using 6lb test line. Depths approximate, results achieved using Silver Thread® fishing line.

Model	Name	Colors Available
D74	Big Craw	34, 35, 60, 65, 75
D76	Deep Wee	34, 35, 40, 60, 63, 65, 67, 75, 84
F76	Wee-Crawfish™	34, 35, 40, 60, 63, 65, 67, 75, 84
D77	Deep Teeny Wee	34, 35, 40, 60, 65, 67, 75, 84
F77	Teeny Wee-Crawfish™	01, 34, 35, 40, 56, 57, 60, 63, 65, 67, 68, 75, 84

Rebel® Crawfish™

The Rebel® Crawfish™ is the original realistic crawfish crankbait. These baits mimic a fleeing crawfish. The distinct, pulsating action is irresistible and extremely effective in rivers and streams.

The configuration of the Rebel Crawfish is the exclusive property of EBSCO Industries and are protected by U.S. Trademark Registration Number 1,601,036.





Little Lures Land Lots of Fish.

Rebel® Ultralights

What was the first lure you ever used? For many, it was one of Rebel's ultralights. In fact, it is likely no other line of lures has simultaneously caught as many fish and fishermen. Whether an expert wading their favorite smallmouth stream or a young angler fishing along the bank of a nearby pond, Rebel® ultralights produce fish for everyone, every time!

Model	Name	Size (In)	Size (cm)	Weight (oz)	Weight (g)	Hook Size	Cranking Depth (ft)
S75	Cat'r Crawler®	1 5/8	3.98	5/64	2.2	#14	Sinker
F71	Wee Frog	2	5.08	3/8	10.5	#6	3-4*
F70	Teeny-Wee Frog	1 1/2	3.81	1/8	2.5	#14	0-2*
F67	Tadfry®	1 1/4	3.18	1/16	1.5	#12	0-3*
F47	Floating Ghost Minnow	2 1/4	5.65	3/32	2.8	#10	0-2*
S72	Hellgrammite	1 3/4	4.45	3/32	2.4	#14	Sinker

*depths are approximate and obtained using 6lb test Silver Thread® line

The configuration of the Rebel Wee Frogs are the exclusive property of EBSCO Industries and are protected by U.S. Trademark Registration Number 1,603,880.

The configuration of the Rebel Tadfry are the exclusive property of EBSCO Industries and are protected by U.S. Trademark Registration Number 351,211.

Model Colors Available
 All Available in all colors shown in each model's corresponding color chart.



The Bumble Bug

Busy Buzzing Around.



F74

Model	Name	Size(In)	Size(cm)	Weight(oz)	Weight(g)	Hook Size	Cranking Depth(ft)
F74	Bumble Bug®	1 1/2	3.7	7/64	3.0	#14	0-2*

*depths are approximate and obtained using 4lb test Silver Thread® line

Model Colors Available

F74	10, 11, 12, 13, 14, 15
-----	------------------------

Bumble Bug®

Bugs on the surface attract fish, and the Rebel™ Bumble Bug® is no exception. This ultralight lure features a wide-wobbling action. It can be fished as a topwater lure or as a crankbait. Twitch it. Crank it. Pop it.



Wee-R[®] finding Fishⁱⁿ two Zones.



F93



D93

REBEL

Model	Name	Size (In)	Size (cm)	Weight (oz)	Weight (g)	Hook Size	Cranking Depth (ft)
D93	Deep Wee-R [®]	2	5.08	3/8	10.5	#6	8-10
F93	Wee-R [®]	2	5.08	3/8	10.0	#6	4.5-6

Depths are approximate and obtained using 12lb test Silver Thread[®] line

Model	Colors Available
D93	01, 35*, 36*, 38*, 364
F93	01, 35*, 36*, 38*, 364

*Matte Finish

Rebel[®] Wee-R[®]

A long time classic, the Wee-R[®] has a great wiggle and is easy to retrieve. Bass anglers use the Wee-R[®] as a fish locator around rocks, stumps and submerged timber...they'll find them every time!



Good Old Crankbaits Never Die.



Humpback®

The classic shape of the Humpback produces fish year after year. As a shallow runner, the Humpback® is effective when fished above or around aquatic vegetation and is great for schooling fish.

Model	Name	Size (In)	Size (cm)	Weight (oz)	Weight (g)	Hook Size	Cranking Depth (ft)
F25	Humpback®	1 3/4	4.45	1/4	7.0	#6	2-4*

*depths are approximate and obtained using 8lb test Silver Thread® line

Model	Colors Available
F25	01, 02, 03



Lookin' for a Buzz?



Model	Name	Size (In)	Size (cm)	Weight (oz)	Weight (g)	Hook Size	Cranking Depth (ft)
T4	Buzz'n Frog®	2 1/2	6.35	1/2	14.0	1/0	topwater

Model	Colors Available
T4	60, 61, 62, 66



Buzz'n Frog®

The Buzz'n Frog® is a buzz bait in disguise, the only difference being that when you stop the retrieve, this lure floats head up just like a frog. The free spinning rear legs churn the water's surface and the semi-weedless rear hooks easily slip through heavy grass, weeds and moss.



Model	Name	Size (In)	Size (cm)	Weight (oz)	Weight (g)	Hook Size	Cranking Depth (ft)	Trolling Depth (ft)
D20	Spoonbill	4 1/2	11.4	1/2	14	#4	7-9	14.4
DJ30	Jointed Spoonbill	5 1/2	13.97	3/4	21	#2	8-10	16.9

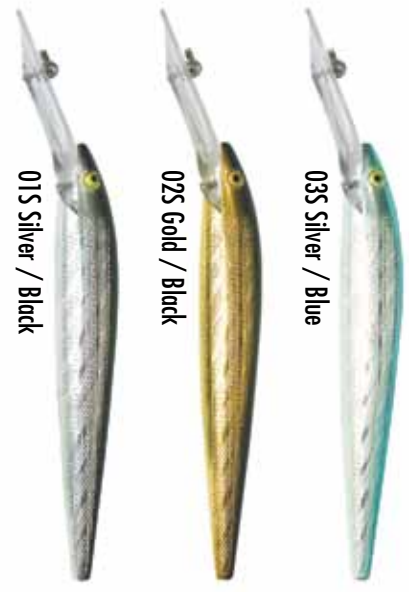
*depths are approximate and obtained using 10lb test Silver Thread® line (trolling depths measured 120ft back with .0134" diameter line)

Model	Colors Available
D20	01S, 03S
DJ30	01S, 02S, 03S

Spoonbill Minnow

The Rebel® Spoonbill Minnow is equipped with super-strong corrosion resistant hooks and a tight defined wiggling action. It digs deep and catches a variety of species.

Spoonbills Dig
Down
 a little
Deeper.



Back by Popular Demand.

Jumpin'® Minnow™

The 3 1/2 inch T10 Rebel Jumpin' Minnow has re-surfaced after a period of obscurity, during which time, veteran anglers vigilantly guarded their remaining stock. A Jumpin' Minnow glides from side to side, skimming the surface like a baitfish fleeing a furious predator, and its old-style lead rattle creates a distinctive call that beckons fish from far away. It casts like a bullet and ranks among the easiest to work of all walking baits.



Model	Name	Size(In)	Size(cm)	Weight(oz)	Weight(g)	Hook Size	Cranking Depth(ft)
T10	Jumpin'® Minnow	3 1/2	8.89	3/8	8.8	#6	Topwater
T20	Jumpin'® Minnow	4 1/2	11.4	1/2	23	#2	Topwater

Model	Colors Available
T10	00, 01, 03, 00CB
T20	00S, 01S, 03S, 195 – All T20s have Saltwater Hooks.

Count Down To Hook Up.



TD47

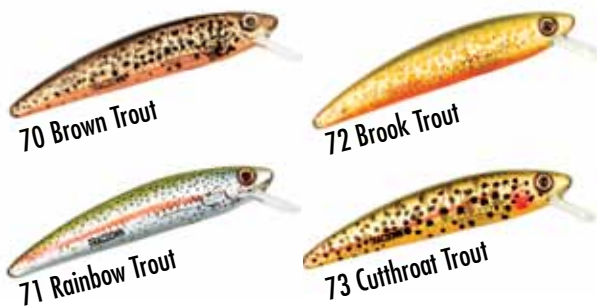
Model	Name	Size(In)	Size(cm)	Weight(oz)	Weight(g)	Hook Size	Cranking Depth(ft)
TD47	Tracdown® Minnow	2 1/4	5.70	1/8	3.2	#10	0-2*

*depths are approximate and obtained using 4lb test Silver Thread® line

Model	Colors Available
TD47	70, 71, 72, 73

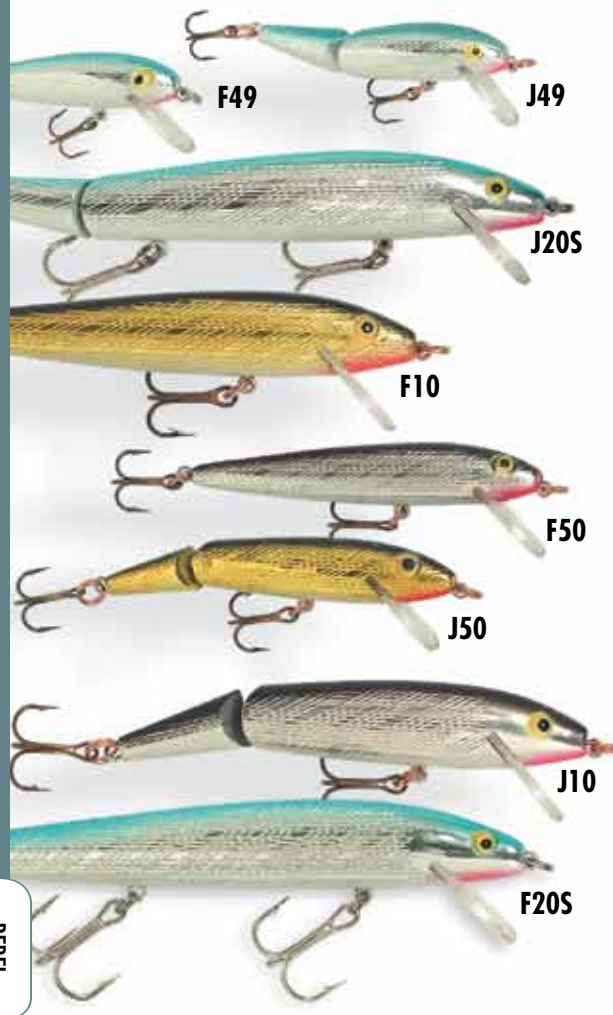
Tracdown® Minnow™

Unequaled in action and productivity, the Tracdown sinking minnow sinks at a rate of one foot per second. This allows the angler to count his lure down and retrieve it at the exact depth of located suspended fish.



The One That Started It

is still swimming strong.



Rebel® Minnow

The 3 1/2" Rebel® Minnow™ (F10) was the first hard plastic Rebel™ lure produced. Its success came almost overnight. Demand quickly grew for other sizes and styles of the now legendary Rebel® Minnow™. For traditional, dependable, true-running action, nothing compares to the one that started it all — the Rebel® Minnow™.

Model	Name	Size (In)	Size (cm)	Weight (oz)	Weight (g)	Hook Size	Cranking Depth (ft)
J30S	Jointed Minnow	5 1/2	13.62	11/16	19.4	#2	0-4**
F20S	Minnow	4 1/2	11.55	3/8	10.1	#4	0-3**
J20S	Jointed Minnow	4 1/2	11.47	7/16	11.3	#4	0-3**
F10	Minnow	3 1/2	8.95	5/16	7.6	#6	0-3***
J10	Jointed Minnow	3 1/2	8.80	5/16	7.5	#6	0-3***
F50	Minnow	2 1/2	6.35	1/8	3.6	#10	0-2****
J50	Jointed Minnow	2 1/2	6.51	1/8	3.3	#10	0-2****
F49	Minnow	1 5/8	4.13	5/64	2.2	#12	0-2*****
J49	Jointed Minnow	1 7/8	4.71	3/32	2.6	#14	0-2*****

*using 14lb test line, **using 10lb test line, ***using 8lb test line, ****using 6lb test line, *****using 4lb test line Silver Thread® line used for all results.

Model	Colors Available	Model	Colors Available
J30S	01, 02, 03	F50	01, 02, 03
F20S	01, 02, 03	J50	01, 02, 03, 48, 70, 71
J20S	01, 02, 03, 48	F49	01, 02, 03
F10	01, 02, 03	J49	01, 02, 03, 48, 70, 71
J10	01, 02, 03, 48, 70, 71		



*Naturalized



They're Coming Fast Down the Track!

Jointed Fastrac® Minnow

Great Lakes anglers have seen trolling lures come and go. Rebel's Fastrac® series, however, has remained a trolling standard since their introduction. Their angled bills give the tight action and high speed trolling ability that other lures just can't match.

Model	Name	Size (In)	Size (cm)	Weight (oz)	Weight (g)	Hook Size	Cranking Depth (ft)	Trolling Depth (ft)
FTJ3	Jointed Fastrac®	5 1/2	13.97	1/2	20	#2	5-7	14.5
FTJ2	Jointed Fastrac®	4 1/2	11.40	3/8	13	#4	5-7	13.5

*depths are approximate and obtained using 10lb test Silver Thread® line at 120 feet back

Model Colors Available

FTJ3 01, 03, 15SS

FTJ2 01, 02, 03, 15SS



01 Silver/Black



02 Gold/Black



03 Silver/Blue



15SS Chrome/Blue/Silver

When Appearance is at a Premium.



Model	Name	Size (In)	Size (cm)	Weight (oz)	Weight (g)	Hook Size	Cranking Depth (ft)
P66	Super Pop-R®	3 1/8	6.66	5/16	8.7	#4	topwater
P60E	Pop-R®	2 1/2	6.35	1/4	7.0	#6	topwater

Model	Name	Colors Available
P66	Super Pop-R®	ZBB-R, ZBD-R, ZGS-R, ZSS-R
P60E	Pop-R®	ZBG-R, ZBR-R, ZCS-R, ZRT-R

Premium Pop-R®

These surface poppers produce just the right "spit" and sound as they dance across the water's surface. Realistic appearance, super design, terrific action and XCalibur® Tx3™ Rotating Treble Hooks bring the Premium Pop-R® to life and the fish can't resist.



Often Imitated, Never Duplicated.



Model	Name	Size (In)	Size (cm)	Weight (oz)	Weight (g)	Hook Size	Cranking Depth (ft)
P65	Magnum Pop-R®	3	7.62	1/2	14.0	#4	topwater
P61	Pop-R® Plus	2 1/2	6.35	1/4	7.6	#6	topwater
P60	Pop-R®	2 1/2	6.35	1/4	7.8	#6	topwater
P50	Teeny Pop-R®	2	5.08	1/8	3.5	#8	topwater

Model	Name	Colors Available
P65	Magnum Pop-R®	00, 01, 03, 17, 48, 54, 56, 75, 77, G253, G254
P61	Pop-R® Plus	G253, G254, G255, G256
P60	Pop-R®	00, 01, 03, 17, 48, 54, 56, 75, 77, 214, G1, G4, G13, GF41
P50	Teeny Pop-R®	00, 01, 03, 17, 48, 54, 56, 75, 77

Pop-R®

Often copied but never matched, the Rebel Pop-R® remains the standard by which all other topwater poppers are judged. Don't be fooled by the imitations. These are the original Pop-R's.



* G-Finish



Item #	Description
UW10373	Banner. Made of white, weatherproof Tyvek®. Grommet in each corner. Color logo printed with weather resistant ink.



America's Favorite Fishing Lures

Rebel Lure Company
 PRADCO-Fishing
 3601 Jenny Lind Road • Fort Smith, AR 72901
 Phone: 479-782-8971 • Fax: 479-783-0234
www.RebelLures.com



Printed in the U.S.A. ©Copyright 2010
 All patents and trademarks in this catalog are property of EBSCO Industries.